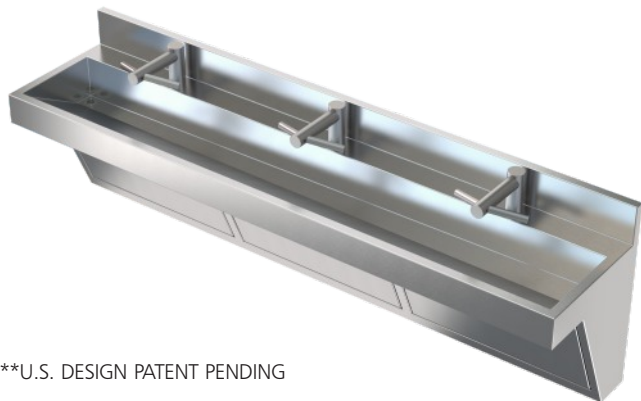



# 96" Hand Wash Sink



\*\*U.S. DESIGN PATENT PENDING

Model Shown: 9173-WD04 (Three Station) Sink  
96" Wide Stainless Steel All-in-One Hand Wash Sink

- WALL MOUNTED 96" WIDE STAINLESS STEEL HAND WASH SINK
- CAN BE USED WITH DYSON AIRBLADE WASH+DRY DECK MOUNTED FAUCET
- PROVIDED WITH A SINGLE OFFSET WASTE AND INCLUDES A REMOVABLE GRID STRAINER, CLOSE ELBOW AND P-TRAP
- ADA COMPLIANT (WHEN PROPERLY INSTALLED) 
- MATERIAL OF CONSTRUCTIONS PHYSICAL PROPERTIES IN COMPLIANCE WITH:  
CSA B45.5/IAPMO Z124  
ANSI/ICPA SS-1  
(REFER TO TECHNICAL DATA SHEET FOR COMPLETE DETAILS)
- GREENGUARD GOLD CERTIFIED FOR LOW EMISSIONS



ADA Compliant



**APPROVAL FOR MANUFACTURE**

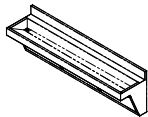
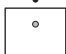
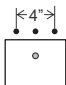
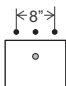
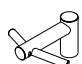
COMPANY: \_\_\_\_\_

PROJECT NAME: \_\_\_\_\_

SIGNEE'S NAME PRINTED CLEARLY: \_\_\_\_\_

DATE: \_\_\_\_\_

AUTHORIZED SIGNATURE: \_\_\_\_\_


DESCRIPTION	MODEL/OPTION #
<b>A ORIENTATION</b> - Required Selection	INIT. _____
 <input checked="" type="checkbox"/> <b>Wall Mounted Sink</b> (Standard Surface Mounting)	9173
<b>B FAUCET AND CONFIGURATION</b> - Required Selection	INIT. _____
 <input type="checkbox"/> <b>Single Hole</b> ø1-3/8" Centered Hole	- H1
 <input type="checkbox"/> <b>4" Centerset</b> ø1-3/8" Centerset Holes	- H34
 <input type="checkbox"/> <b>8" Centerset</b> ø1-3/8" Centerset Holes	- H38
 <input type="checkbox"/> <b>WD04 Dyson Airblade Wash+Dry</b> Deck Mounted Faucet (Recommend ASSE 1070 Valve)	
Customer is required to submit Faucet spec sheet to confirm compatibility with Neo-Metro's Faucet drilling. Important: WD06 Wall Mounted Dyson Airblade Wash+Dry is not compatible with fixture.	
<b>C PRODUCT OPTIONS</b> Optional Selection	INIT. _____
<input type="checkbox"/> <b>MXTP (ASSE 1070 Tempering Valve)</b>	-ST70CP-12
<b>NOTE:</b> Recommend One (1) Mixing Valve Per Station. Valve Specs: 4.5 GPM (17 LPM) @ 45 PSI (310 kPa)	
<input type="checkbox"/> <b>Concealed Mounting Carrier</b>	-MC
<input type="checkbox"/> <b>316 Stainless Steel</b> In Lieu of Standard 304 STN STL	-316

 **WARNING:** Cancer and Reproductive Harm - [www.P65Warnings.ca.gov](http://www.P65Warnings.ca.gov)

# 96" Hand Wash Sink

**Hand Wash Sink** is designed for use in Healthcare and food-service institutions such as Pharmacies, Healthcare, Medical buildings and Hospitals providing a convenient Sink to wash up.

**P-Trap Enclosure** is included to conceal hot & cold Mixing Valve, Supply and Waste connections. Enclosure is fabricated of 18 gage, type 304 stainless steel with a satin finish and engineered to provide a profile that complies with ADA.

 **Hand Wash Sink** is fabricated from 16 gage, type 304 stainless steel and is seamless welded construction with a satin finish. The Cabinet interior is sound-deadened with a Fire-Resistant material. The unit is designed with the capability of being installed on the wall using a Mounting Carrier. Hand Wash Sink has a sloping bottom surface to minimize splashing, an 1-1/4" Tailpiece with a Grid Strainer and an 1-1/2" O.D. P-Trap.

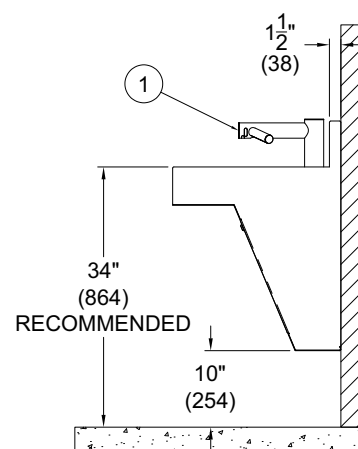
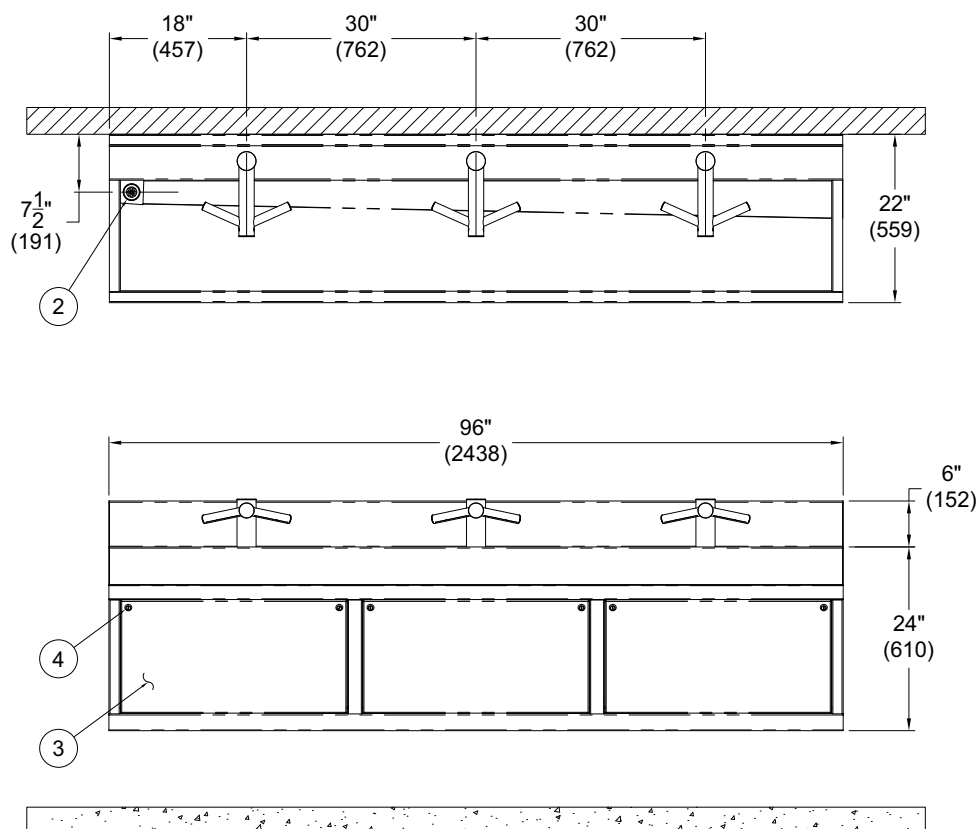
**Mounting Bracket** is included and fabricated of 14 gage type 304 stainless steel with Anchoring Slots. Adequate wall backing is required for surface mounted fixture.

**Optional Valve** is available; ASSE 1070 compliant Valve delivers constant water flow by compensating for temperature and pressure fluctuations. Valve is factory set to 105° Fahrenheit and includes integral Checks and Strainer to prevent cross-flow and contamination. Maximum operating pressure 125 PSI.

**Dyson Airblade Wash+Dry Faucet is optionally available.** Also available (-H1) a 1-3/8" (35mm) hole can be drilled in a pre-configured single-hole, (-H34) 4" centerset holes and (-H38) 8" centerset holes Faucets by others. Neo-Metro requires customers to submit specification sheet of Faucet to confirm compatibility. Custom Faucet configurations may be specified by submitting a completed and signed Faucet Drilling Worksheet. Neo-Metro stainless steel commercial Faucets are available and sold separately.

## NOTES:

1. WD04 DYSON AIRBLADE WASH+DRY (SHOWN FOR REFERENCE ONLY)
2. GRID STRAINER AND 1-1/4" TAILPIECE
3. HINGED ACCESS PANEL
4. CYLINDER LOCK



## MODEL# 9173-WD04

Model Shown: 9173-WD04 (Single Station) Sink  
96" Wide Stainless Steel All-in-One Hand Wash Sink

All dimensions are subject to manufacturer's tolerance of plus or minus 1/2" nominal and subject to change without notice. Neo-Metro assumes no responsibility for use of void or superseded data. Neo-Metro, City of Industry, CA, Member of Morris Group International. Please visit [www.neo-metro.com](http://www.neo-metro.com) for most current specifications.

When properly installed,  
the Fixture is ADA compliant.



**INSTALLATION INSTRUCTIONS ARE AVAILABLE**

Latest product information [www.neo-metro.com](http://www.neo-metro.com)

**NEO-METRO® by ACORN®**

A Member of Morris Group International

15125 Proctor Avenue • City of Industry, CA 91746 USA  
TF 800.488.8999 • PH 626.366.4561 • FX 626.961.2200