

# NEO-Basin with Side Shelves

## FEATURES

**D-SHAPED WALL MOUNTED WASH BASIN**

**Heavy 16-Gage Stainless Steel Construction**

**Integral Bowl Design**

**INTEGRAL SIDE SHELVES**

**Satin Finish is Standard; Optional Mira High Polish Finish Stainless Steel Also Available.**

**Stainless Steel is a Recyclable Metal** 

**Enclosed Bottom Configuration Available.**

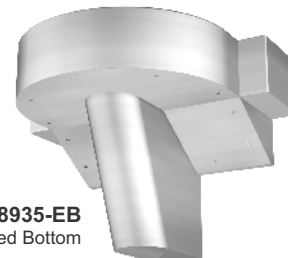
**ADA Compliant** 

**GREENGUARD GOLD CERTIFIED FOR LOW EMISSIONS**

**NOTE: Faucet not Included. Faucet Punching Must be Specified.**

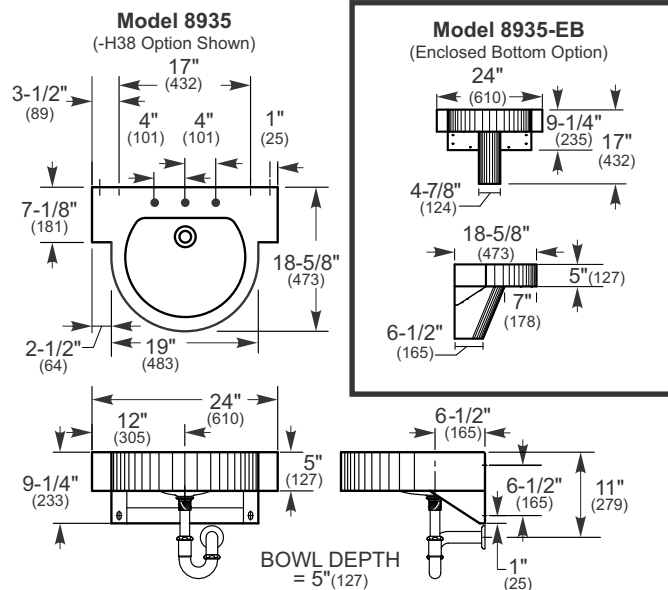


**Model 8935**  
With Side Shelves




**Model 8935-EB**  
With Side Shelves & Enclosed Bottom




\* U.S. Design Patent 455200



## ORDERING OPTIONS

<input type="checkbox"/> 8935	NEO-BASIN with Side Shelves Satin Finish Stainless Steel
<input type="checkbox"/> 8935-HP	NEO-BASIN with Side Shelves Mira Finish Stainless Steel
<input type="checkbox"/> 8935-EB	NEO-BASIN with Side Shelves & Enclosed Bottom Entire Unit is Satin Finish Stainless Steel
<input type="checkbox"/> 8935-HP-EB	NEO-BASIN with Side Shelves & Enclosed Bottom Entire Unit is Mira Finish Stainless Steel
<input type="checkbox"/> -OF	Option - Overflow Outlet 

All basins must be specified for faucet punching on deck.  
Faucets not included.

<input type="checkbox"/> - H1	<input type="checkbox"/> - H38	<input type="checkbox"/> - H0
 Single Hole	 8" (203mm) Center Set	 Less Punching (Will use wall mounted faucet)

**INSTALLATION INSTRUCTIONS ARE AVAILABLE.**

**Product Specifications** . . . Neo-Basin shall be manufactured entirely out of 16-gage, Type 304 Satin Finish stainless steel, seam welded construction. A Mira (High Polish) Stainless Steel fixture is also available. The Neo-Basin features a patented\* integral 'D' Bowl design. Model 8935 also features integral side shelves. The deck of the basin is extended by an area of 2-1/2" x 7-1/8" (64 mm x 181 mm) on both sides. The basins shall have a 1-1/2" (38 mm) diameter drain opening for a standard drain fitting. A 1-1/2" (38 mm) P-trap is provided. A back cover is provided to conceal mounting supports. The basin is available with a bottom enclosure matching the finish of the ordered basin. This basin, in either configuration, complies with ADA requirements. Please check your local code as other ADA considerations may be necessary.

**Plumbing Specification** . . . All Neo-Basin are wall mounted. The deck can be factory punched with either single hole or 8" (203 mm) center set (customer must specify at time of ordering). Holes punched for faucets are 1-5/16" (33 mm) diameter. Faucet is not included. P-trap, drain and hardware kit included only for customers in the U.S.A. The basin can be manufactured with an overflow outlet.



## APPROVAL FOR MANUFACTURE

COMPANY: \_\_\_\_\_

PROJECT NAME: \_\_\_\_\_

SIGNEE'S NAME WRITTEN CLEARLY: \_\_\_\_\_

DATE: \_\_\_\_\_

AUTHORIZED SIGNATURE: \_\_\_\_\_

Stainless Steel  
is Recyclable

