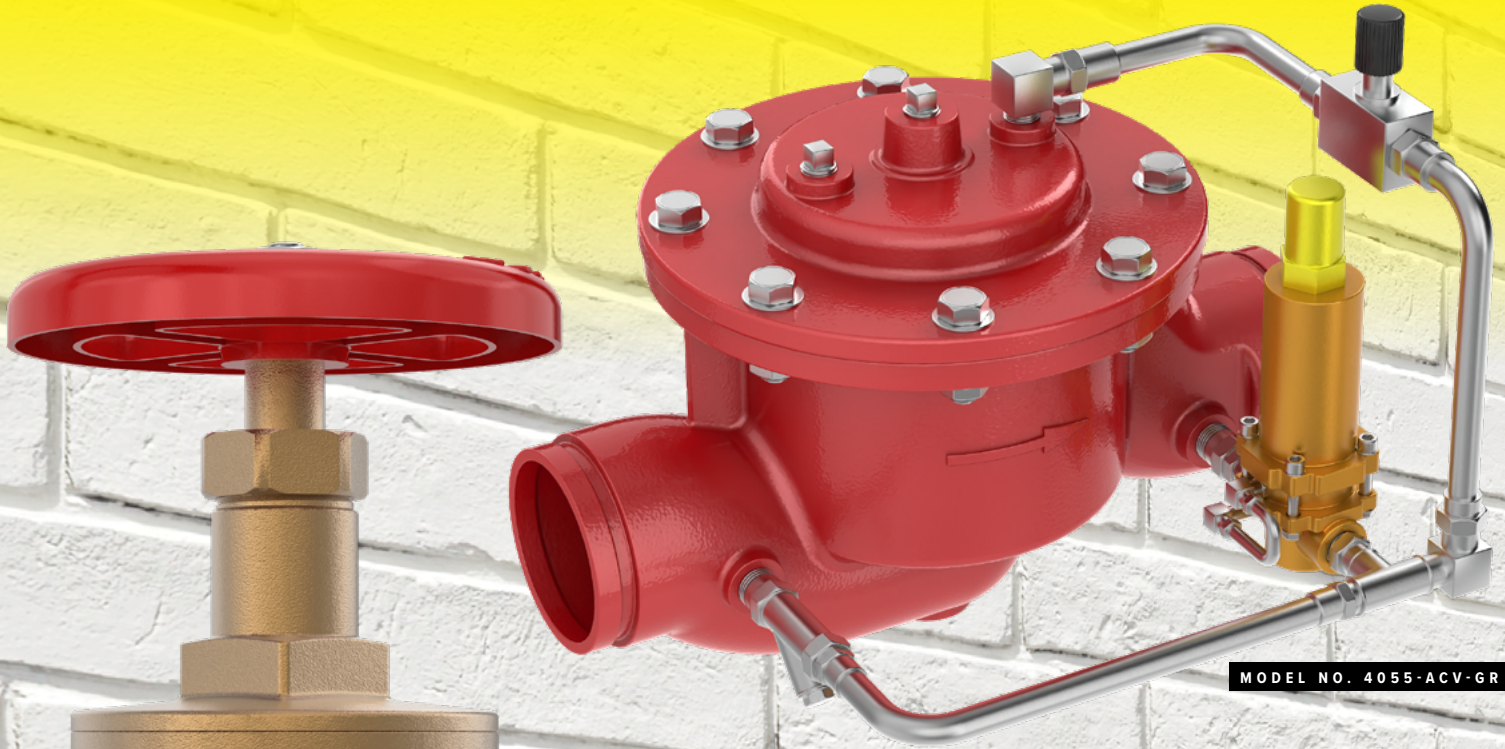




MECHANICAL SERIES

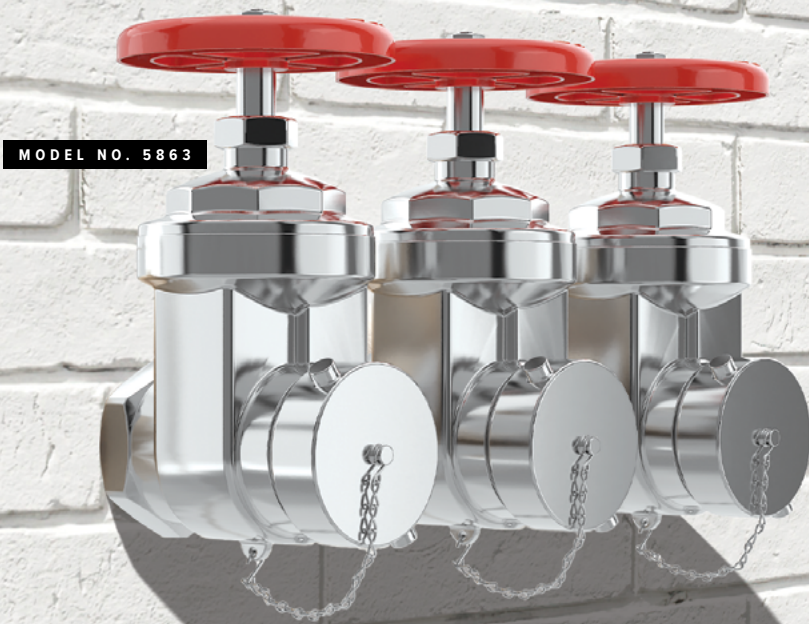
PRODUCT BROCHURE



MODEL NO. 4055-ACV-GR



MODEL NO. 4065-EV



MODEL NO. 5863

TABLE OF

CONTENTS

PAGE **4**

PRESSURE REDUCING
VALVES

PAGE **5**

HOSE AND GATE VALVES,
ACCESSORIES

PAGE **6**

FLUSH CONNECTIONS

PAGE **8**

WALL AND FREESTANDING
CONNECTIONS,
WALL PLATES, PLUGS

PAGE **10**

HYDRANTS AND ROOF
CONNECTIONS

PAGE **11**

PUMP TEST
CONNECTIONS

PAGE **13**

HOSE RACK ASSEMBLIES

PAGE **14**

HOSE, HOSE STORAGE,
AND NOZZLES

PAGE **16**

STEPS TO SELECT
A CABINET

PAGE **18**

FIRE HOSE AND
EXTINGUISHER CABINETS

PAGE **19**

FIRE EXTINGUISHER
CABINETS

PAGE **20**

MGI CONTROLS®
PRESSURE REDUCING
VALVES

PAGE **8**

FIRE EXTINGUISHER
CABINETS

PAGE **12**

FIRE DEPARTMENT
VALVE CABINET

PAGE **17**

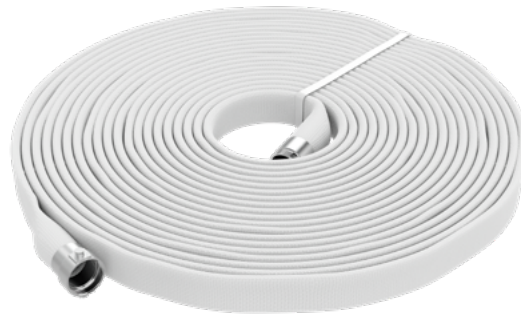
FIRE HOSE CABINETS

PAGE **22**

FIRE PRO PRODUCTS

MODEL NO. 1504-A

PAGE 6



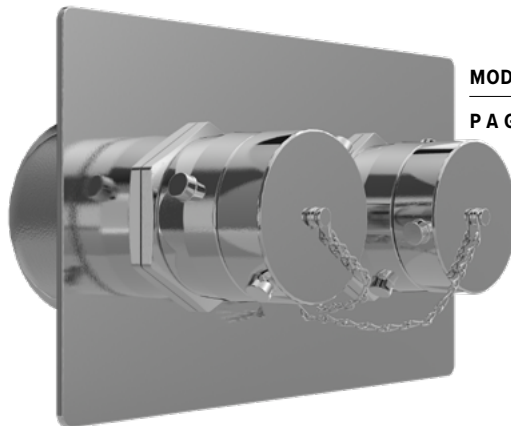
MODEL NO. 2911

PAGE 10



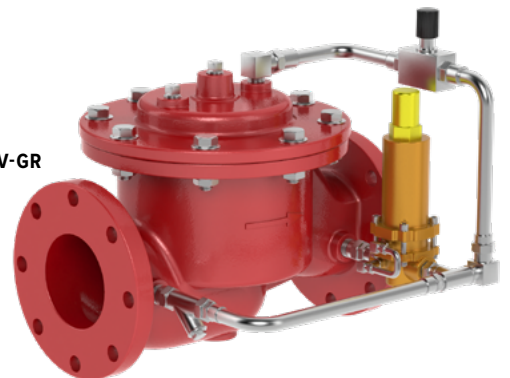
MODEL NO. 4005

PAGE 12



MODEL NO. 5021

PAGE 14



MODEL NO. 4055-ACV-GR

PRESSURE REDUCING VALVES



POTTER ROEMER OFFERS A BROAD VARIETY OF DIRECT ACTING PRESSURE REDUCING VALVES.

They automatically adjust inlet pressure, either flowing or non-flowing, and reduce the downstream pressure to the preset limit. These valves can be used as a fire department hose valve or as a fire sprinkler control valve. Adjustable or factory set valves are available.

ADJUSTABLE:

This type of valve allows for field adjustment of the valve, so that changes in upstream pressure can be manually fine-tuned to achieve the required downstream pressure.

MODEL NO. 4005



- MODEL NO. 4005** 2½" F x F inline brass sprinkler control valve
- MODEL NO. 4010** 1½" F x F brass angle hose valve
- MODEL NO. 4015** 1½" F x M brass angle hose valve
- MODEL NO. 4021** 2½" F x F brass angle hose valve
- MODEL NO. 4023** 2½" F x M brass angle hose valve
- MODEL NO. 4032** 2½" F x F brass angle sprinkler control valve
- MODEL NO. 4033** 2½" F x M brass angle hose valve
- MODEL NO. 4036** 2½" F x F brass inline sprinkler control valve
- MODEL NO. 4038** 2½" F x F brass angle sprinkler control valve

NON-ADJUSTABLE:

Commonly referred to as a factory set valve, they are manufactured to the project requirements, allowing for the recommended outlet pressure.

MODEL NO. 4045

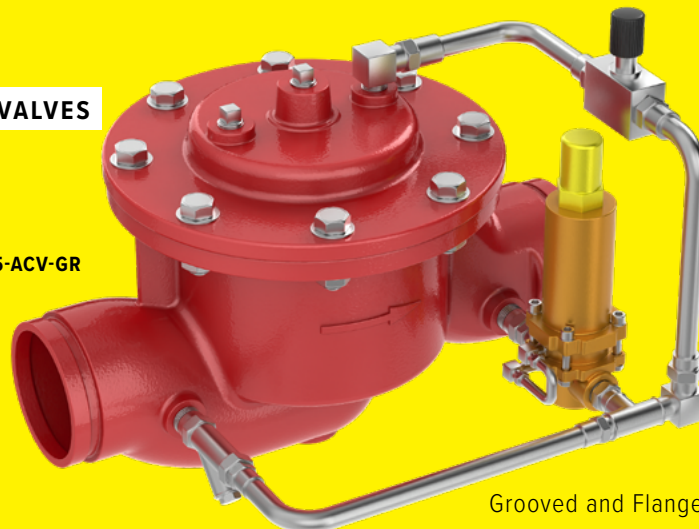


- MODEL NO. 4042** 1½" F x F brass angle valve – can be used either as a hose valve or a sprinkler control valve
- MODEL NO. 4045** 1½" F x M brass angle hose valve
- MODEL NO. 4050** 2½" F x F brass angle valve – can be used either as a hose valve or a sprinkler control valve
- MODEL NO. 4052** 2½" F x F brass inline sprinkler control valve
- MODEL NO. 4053** 2½" F x M brass angle hose valve

Valves are UL and ULC listed.

AUTOMATIC PRESSURE REDUCING VALVES

MODEL NO. 4055-ACV-GR



Grooved and Flanged options available in 1½"-12"

HOSE AND GATE VALVES, ACCESSORIES



MODEL NO. 4065



MODEL NO. 4085



MODEL NO. 4305

HOSE VALVES

MODEL 4060 AND 4065 FEMALE X MALE, ANGLE HOSE VALVE

These hose valves are to be used with a fire hose rack assembly or as a fire department outlet connection. These models feature cast brass valve construction, red hand wheel, and female NPT inlet x male hose thread outlet. Both models are available with a 300 PSI rating; model 4065 can also be specified with a 500PSI rating.

MODEL NO. 4060 1½" size

MODEL NO. 4065 2½" size

PRESSURE RESTRICTING VALVES

MODEL 4080 AND 4085 ADJUSTABLE PRESSURE RESTRICTING ANGLE VALVE

These pressure restricting valves are to be used with a fire hose rack assembly or as a fire department outlet connection. Water pressure is controlled by adjustable flow restriction. If full flow is required, the restriction may be overridden. Both models feature cast brass valves, red hand wheel with a pressure restricting feature, and FeM NPT inlet x M hose thread outlet. 175 PSI/12 bars rated. Furnished with field setting chart.

MODEL NO. 4080 1½" size

MODEL NO. 4085 2½" size

GATE VALVES

MODEL 4315 TO 4335 HOSE GATE VALVES WITH NON-RISING STEM

These Hose Gate Valves are to be used as a fire department outlet connection and are designed for dry systems only. Unrestricted waterway allows full flow. Suitable for use as a pump test valve. The non-rising stem feature requires less installation space than other valve models. These models feature a cast brass valve with a non-rising stem, red hand wheel, feM NPT inlet x M hose thread outlet, brass solid wedge disc and tapered seat.

MODEL NO. 4305 1½" Size

MODEL NO. 4315 2½" Size

MODEL NO. 4335 3 x 2½" Size

CAPS AND CHAINS

MODEL 4615 AND 4625 VALVE CAPS AND CHAINS

These valve caps and chains are used to cover and protect M threads on valves and hydrants, discouraging the entry of foreign matter. These models feature a cast brass cap with feM hose thread, pin lugs and chain.

MODEL NO. 4615 1½" Size

MODEL NO. 4625 2½" Size



MODEL NO. 4625

REDUCER

MODEL 2810 FEMALE TO MALE REDUCING HOSE ADAPTER

Used to reduce or change threads. 2½ x 1½ female x male. (Other sizes available)



MODEL NO. 2810

FLUSH CONNECTIONS

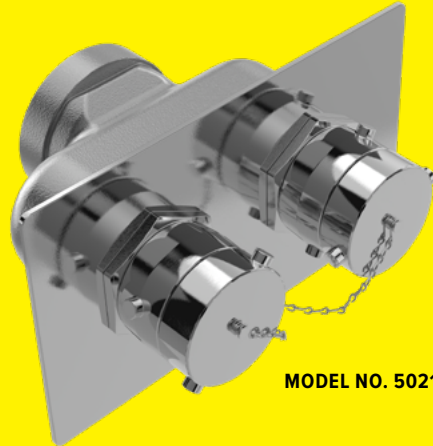
POTTER ROEMER'S FLUSH FIRE DEPARTMENT INLET CONNECTIONS are used as an auxiliary connection to supplement the fire protection water supply and provide a range from 250 GPM/946LPM to 1500 GPM/5678LPM at the recognized standard of 250GPM per inlet. Regularly furnished in cast brass, ductile iron, or fabricated steel bodies supplied with either built in drop clappers or clapper snouts. Brass plugs provided.



MODEL NO. 5005

SINGLE INLET

- MODEL NO. 5005** 1½" with round plate
- MODEL NO. 5011** 2½" with round plate
- MODEL NO. 5012** 3" x 2½" with round plate



MODEL NO. 5021

TWO-WAY INLET

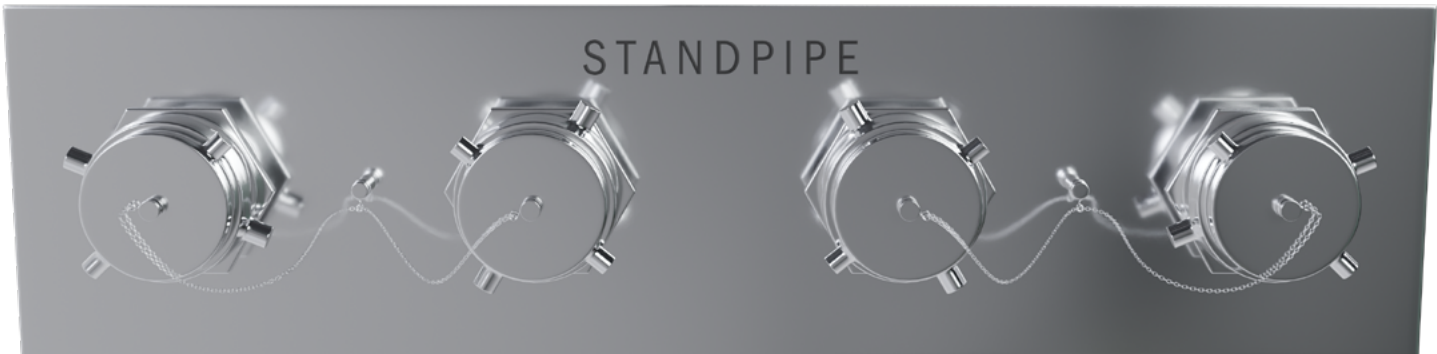
- MODEL NO. 5021 TO 5023** 4" outlet with 2½" inlets
- MODEL NO. 5025 TO 5027** 6" outlet with 2½" inlets
- MODEL NO. 5104 TO 5166** 4" or 6" outlets with 3" x 2½" inlets, clapper bodies
- MODEL NO. 5521 TO 5538** 4" or 6" outlets with 3" x 2½" inlets, clapper snouts



MODEL NO. 5031

THREE-WAY INLET

- MODEL NO. 5031 TO 5033** 6" outlet with 2½" inlets



MODEL NO. 5216

FOUR-WAY INLET:

MODEL NO. 5206 TO 5256 6" outlet with 3"x 2½" inlets, clapper bodies

MODEL NO. 5541 TO 5548 6" outlet with 3"x 2½" inlets, clapper snouts



MODEL NO. 5406

FOUR-WAY SQUARE INLET:

MODEL NO. 5406 TO 5436 6" outlet with 3"x 2½" inlets, clapper bodies

MODEL NO. 5581 TO 5586 6" outlet with 3"x 2½" inlets, clapper snouts



MODEL NO. 5306

SIX-WAY INLET:

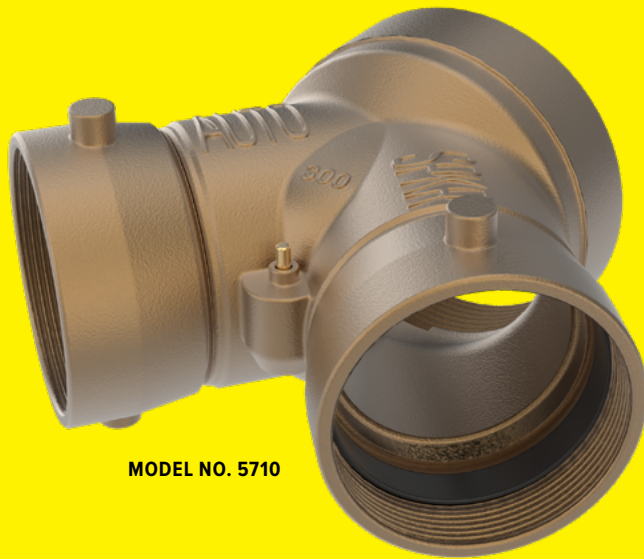
MODEL NO. 5306, 5326, AND 5346 6" outlet with 3"x 2½" inlets, clapper bodies

MODEL NO. 5308, 5328, AND 5348 8" outlet with 3"x 2½" inlets, clapper bodies

MODEL NO. 5561 AND 5565 6" outlet with 3"x 2½" inlets, clapper snouts

MODEL NO. 5567 AND 5569 8" outlet with 3"x 2½" inlets, clapper snouts

WALL AND FREESTANDING CONNECTIONS, WALL PLATES, PLUGS



MODEL NO. 5710

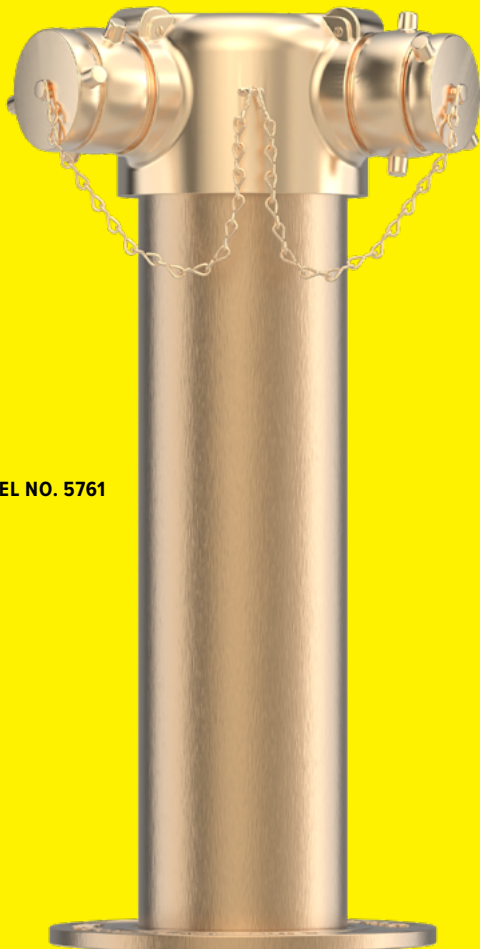
WALL-MOUNTED

Used as an auxiliary inlet connection, the exposed design offers an economical method of satisfying the fire department's inlet requirements. Inlets are 2½".

- MODEL NO. 5710** 4" two-way single clapper, back outlet
- MODEL NO. 5715** 4" two-way single clapper, angle outlet
- MODEL NO. 5721** 4" two-way double clapper, back outlet
- MODEL NO. 5722** 6" two-way double clapper, back outlet
- MODEL NO. 5731** 4" two-way double clapper, angle outlet
- MODEL NO. 5732** 6" two-way double clapper, angle outlet
- MODEL NO. 5740** 4" three-way triple clapper, back outlet
- MODEL NO. 5741** 6" three-way triple clapper, back outlet
- MODEL NO. 5745** 4" three-way triple clapper, angle outlet
- MODEL NO. 5746** 6" three-way triple clapper, angle outlet
- MODEL NO. 5751** 4" two-way double clapper, back outlet with brass plate and plugs
- MODEL NO. 5752** 6" two-way double clapper, back outlet with brass plate and plugs

LETTERING: Auto Sprinkler, Standpipe

FINISH: Rough Brass, Polished Brass, Rough Chrome Plated, Polished Chrome Plated



MODEL NO. 5761

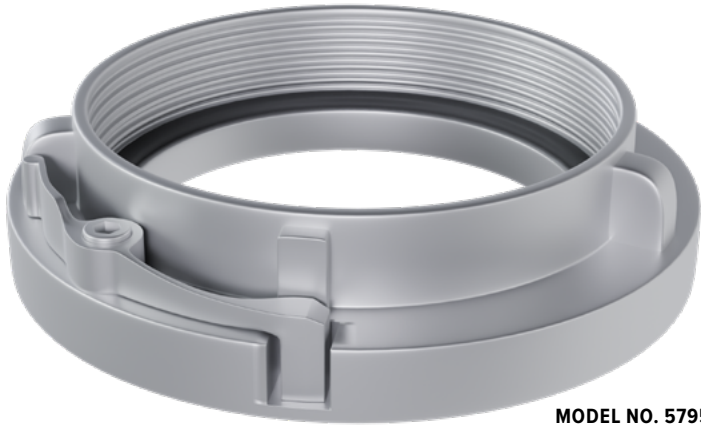
FREE STANDING

Also used as an auxiliary inlet connection, this design is used on exterior fire lines piped vertically through grade. Includes 18" brass sleeve, plugs & chains, and identification base plate. Inlets are 2½".

- MODEL NO. 5761** 4" two-way
- MODEL NO. 5763** 6" two-way
- MODEL NO. 5771** 4" three-way
- MODEL NO. 5773** 6" three-way
- MODEL NO. 5775 TO 5776** 6" four-way square body, clapper snoots
- MODEL NO. 5780 TO 5781** 6" four-way square body, clapper bodies
- MODEL NO. 5785 TO 5786** 6" four-way horizontal clapper bodies
- MODEL NO. 5791** 6" six-way horizontal clapper body
- MODEL NO. 5792** 8" six-way horizontal clapper body

LETTERING: Auto Sprinkler, Standpipe, Auto Speaker Standpipe, Dry Standpipe

FINISH: Rough Brass, Polished Brass, Rough Chrome Plated, Polished Chrome Plated



MODEL NO. 5795

STORZ CONNECTIONS

Storz Connections provide a means of rapid supply through large diameter hose (LDH). Hard coated aluminum construction with one end Storz and other end feM national pipe thread.

- MODEL NO. 5795-01 TO 5795-06** 4" to 6" Storz
- MODEL NO. 5795-01-30 TO 5795-06-30** 4" to 6" Storz, 30-degree angle body
- MODEL NO. 5799-01 TO 5799-03** 4" to 6" Cap with cable

ACCESSORIES



MODEL NO. 5941

MODEL NO. 5941: 2½" brass plug, optional finishes Polished Brass, Rough Chrome, Polished



MODEL NO. 5962

MODEL NO. 5962: 4" round brass plate, optional finished Polished Brass, Rough Chrome, Polished Chrome Plated

MODEL NO. 5964: 6" round brass plate

MODEL NO. 5966: 4" round aluminum plate

MODEL NO. 5968: 6" round aluminum plate

LETTERING: Auto Sprinkler, Standpipe, Auto Spkr Standpipe, Dry Standpipe



MODEL NO. 4625-LC

MODEL NO. 4625-LC: 2½" Locking Cap

MODEL NO. 4630-LC: 3" Locking Cap

"Cap-It" is Constructed of heavy gauge steel. Available in Red or plated to your specifications.



MODEL NO. 5981

MODEL NO. 5981: ½" Ball Drip

MODEL NO. 5982: ¾" Ball Drip

HYDRANTS AND ROOF CONNECTIONS

A HYDRANT IS AN AUXILIARY WATER SUPPLY USED BY THE FIRE SERVICE. Available flush mounted, exposed, or freestanding, it is provided with one to three outlet connections. A valve control to open and close the supply valve should always be included with the hydrant.



MODEL NO. 5801

SINGLE HYDRANT

- MODEL NO. 5801** 2½”F x 2½”M hose thread with round plate
- MODEL NO. 5802** 3”F x 2½”M hose thread with round plate
- MODEL NO. 5803** 3”F x 2½”M hose thread with round plate
- MODEL NO. 5811** 2½”F x 2½”M hose thread with square plate
- MODEL NO. 5812** 3”F x 2½” M hose thread with square plate
- MODEL NO. 5813** 3”F x 3” M hose thread with square plate

TWO-WAY FLUSH HYDRANTS

- MODEL NO. 5821** 4” x 2½” x 2½” back inlet
- MODEL NO. 5822** 4” x 2½” x 2½” angle inlet
- MODEL NO. 5825** 6” x 2½” x 2½” back inlet
- MODEL NO. 5826** 6” x 2½” x 2½” angle inlet

THREE-WAY FLUSH HYDRANTS

- MODEL NO. 5835** 6” x 2½” x 2½” x 2½” back inlet
- MODEL NO. 5836** 6” x 2½” x 2½” x 2½” angle inlet

EXPOSED HYDRANTS

- MODEL NO. 5840** 4” x 2½” x 2½”
- MODEL NO. 5841** 6” x 2½” x 2½”
- MODEL NO. 5843** 6” x 2½” x 2½” x 2½”

FREE-STANDING HYDRANTS

- MODEL NO. 5845** 4” x 2½” x 2½”
- MODEL NO. 5846** 6” x 2½” x 2½”
- MODEL NO. 5848** 6” x 2½” x 2½” x 2½”



MODEL NO. 5872

ROOF CONNECTION

- MODEL NO. 5871** 4” x 2½” x 2½” back inlet
- MODEL NO. 5872** 6” x 2½” x 2½” back inlet
- MODEL NO. 5873** 4” x 3” x 3” back inlet
- MODEL NO. 5874** 6” x 3” x 3” back inlet
- MODEL NO. 5876** 4” x 2½” x 2½” angle inlet
- MODEL NO. 5877** 6” x 2½” x 2½” angle inlet
- MODEL NO. 5878** 4” x 3” x 3” angle inlet
- MODEL NO. 5879** 6” x 3” x 3” angle inlet

A ROOF CONNECTION IS USED AS A STANDPIPE ROOF OUTLET CONNECTION BY THE FIRE SERVICE. It provided the NFPA-14 required 250 GPM per outlet. Angle or straight valves are normally supplied with the connection.

- MODEL NO. 5881** 4” x 2½” x 2½” x 2½” back inlet
- MODEL NO. 5882** 6” x 2½” x 2½” x 2½” back inlet
- MODEL NO. 5883** 4” x 3” x 3” x 3” back inlet
- MODEL NO. 5884** 6” x 3” x 3” x 3” back inlet
- MODEL NO. 5886** 4” x 2½” x 2½” x 2½” angle inlet
- MODEL NO. 5887** 6” x 2½” x 2½” x 2½” angle inlet
- MODEL NO. 5888** 4” x 3” x 3” x 3” angle inlet
- MODEL NO. 5889** 6” x 3” x 3” x 3” angle inlet

PUMP TEST CONNECTIONS

PUMP TEST CONNECTIONS ARE USED TO TEST THE FLOW CAPACITY OF FIRE PUMPS. Each outlet is capable of a minimum flow of 250 GPM/946LPM. Gate valves provide an unrestricted waterway and control of individual outlets (Ref. NFPA 20). Choose from flush or freestanding models to accommodate your facility's needs.



MODEL NO. 5862

MODEL NO.	PUMP SIZE GPM	INLET SIZE	NUMBER OF OUTLETS
5862	500	4"	2
5863	750	6"	3
5864	1000	6"	4
5865	2000	8"	6

FLUSH-MOUNTED

FINISH OPTIONS:

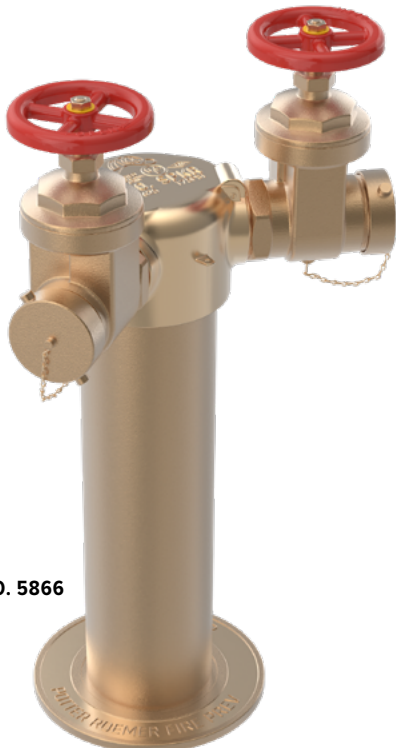
- B Polished Brass
- C Polished Chrome Trim, Rough Chrome Valves
- D Polished Chrome Plated

OPTIONS

- 1 Ductile
- 1½ Steel
- 2 Back
- 3 Angle
- 4 Sq. Back, Brass, or Ductile
- 5 Sq. Angle, Brass, or Ductile

OUTLETS

- 6 M Snoots, Caps, and Chains
- 7 M Snoots, Caps, and Chains, and Removable Swivel Hose Gate Valves



MODEL NO. 5866

FREESTANDING

OPTIONS

- 1 Ductile Iron Body
- 1½ Steel Body, Thermally-Fused Red Polyester Coating
- 5 Square Four-Way Body, Brass or Ductile Iron
- 6 M Snoots, Caps and Chains
- 7 M Snoots, Caps, and Chains and Removable Swivel Hose Gate Valves

MODEL NO.	PUMP SIZE GPM	INLET SIZE	NUMBER OF OUTLETS
5866	500	4"	2
5867	750	6"	3
5868	1000	6"	4
5869	2000	8"	6

FIRE DEPARTMENT VALVE CABINET



FIRE DEPARTMENT VALVE CABINETS provide a secure, accessible location for storing fire department connection valves and extinguishers, ensuring quick access to essential firefighting tools.



MODEL NO. 1810-A

1810 SERIES

Cabinet for 2-½" (6.4 cm) fire dept valve

PRODUCT FUNCTION

1810 Series cabinets accommodate a single 2½" (6.4cm) fire dept valve with cap and chain.

ADA MODELS AVAILABLE

1810, 1811, 1812

1830 SERIES

Fire Dept. Pressure Reducing Valve Cabinet

Cabinet for 2-½" (6.4 cm) pressure reducing valve

PRODUCT FUNCTION

1830 Series cabinets accommodate a single 2½"/6.4 cm pressure reducing fire dept valve with cap and chain. This cabinet may be used with other valves when spanner clearance is a factor, or when a 2½ x 1½"/6.4x3.8 cm adapter is required.

ADA MODELS AVAILABLE

1830, 1831, 1832



MODEL NO. 1870-A

1870 SERIES

Cabinet for 2-½" (6.4 cm) fire dept valve

Fire Rated 2½ Inch Fire Dept. Valve and Extinguisher Cabinet

Fire Rated Cabinet for 2-½" (6.4 cm) fire dept valve;
portable fire extinguisher

ADA Compliant & UL Classified



MODEL NO. 1880-A

1880 SERIES

Fire Dept. Valve Cabinet

Fire Rated 2½ Inch Fire Dept. Valve and Extinguisher Cabinet

Fire Rated Cabinet for 2-½" (6.4 cm) fire dept valve;
portable fire extinguisher

ADA Compliant & UL Classified



HOSE RACK ASSEMBLIES

The Potter Roemer semi-automatic hose rack assembly provides an immediate and readily available means of controlling and suppressing fire by one person. The assemblies are capable of accepting the nationally recognized standard for Class II or Class III Service at the outlet of the valve. Units are shipped fully assembled for ease of installation.



MODEL NO. 2510

2500 SERIES

1½ INCH FIRE HOSE RACK ASSEMBLY

50, 75, 100 foot hose lengths

PRODUCT FUNCTION

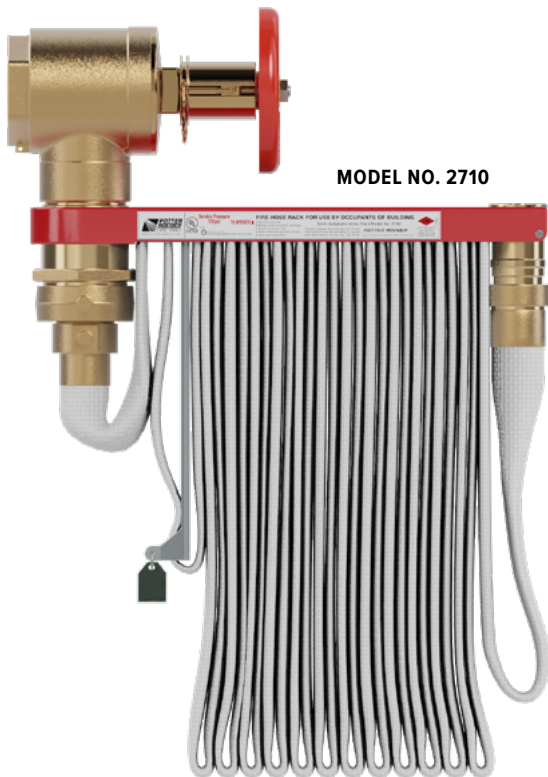
The 2500 Series for Class II Service consists of model 4070 1½” rough brass double feM hose valve, model 2755 1½” nipple, model 2792 red painted steel rack, coupled Polyflex hose, and model 2962 1½” brass adjustable nozzle.

MODEL NO. 2505 50' Length of Hose

MODEL NO. 2507 75' Length of Hose

MODEL NO. 2510 100' Length of Hose

PRESSURE 65 PSI | GPM 100 | UL LISTED



MODEL NO. 2710

2700 SERIES

2½ X 1½” FIRE HOSE RACK ASSEMBLY

50, 75, 100 foot hose lengths

PRODUCT FUNCTION

2700 Series for Class III Service consists of model 4095 2½” rough brass pressure restricting hose valve, model 2756 2½” nipple, model 2794 red painted steel rack, model 2810 2½”x1½” brass reducer, coupled Polyflex hose, and model 2962 1½” brass adjustable nozzle.

MODEL NO. 2705 50' Length of Hose

MODEL NO. 2707 75' Length of Hose

MODEL NO. 2710 100' Length of Hose

PRESSURE 100 PSI | GPM 500 | UL LISTED

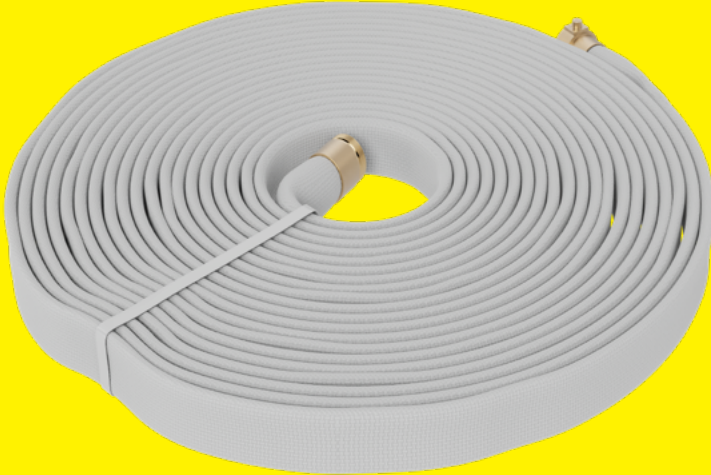
OPTIONS

- A. Red Rack with rough brass valve and polished trim
- B. Red Rack with polished valve and trim
- C. Polished chrome plated rack with rough chrome valve and trim
- D. Polished chrome plated rack with polished chrome valve and trim. Other options include:
 - Valves-pressure reducing and pressure restricting
 - Hose-UL labeled. Rubber lined.
 - Nozzles-Polycarbonate, rubber bumper, constant gallonage

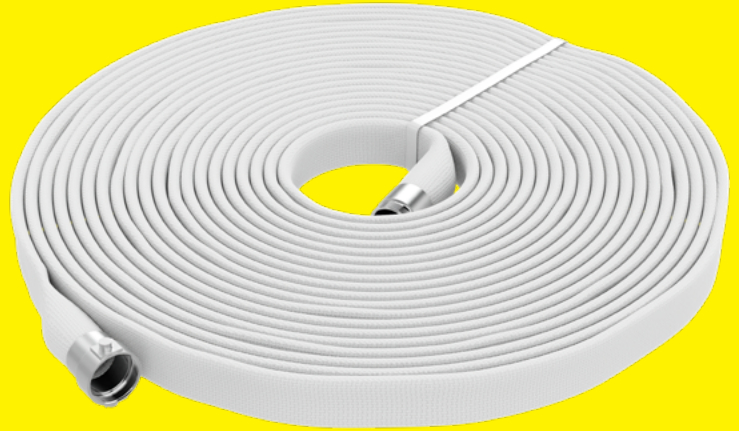
HOSE, HOSE STORAGE, AND NOZZLES



HOSE



MODEL NO. 2902



MODEL NO. 2911

MODEL NO. 2901 TO 2906

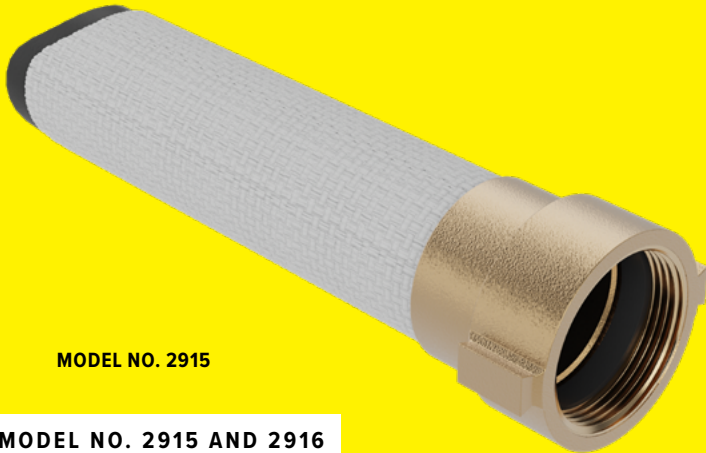
SINGLE JACKET HOSE

The hoses are used with hump racks, reels, hangers, and exterior houses for emergency fire protection in most industrial applications.

MODEL NO. 2911 TO 2914

DOUBLE JACKET HOSE

Double jacket hose provides extra protection where abrasion and high pressure are a consideration.

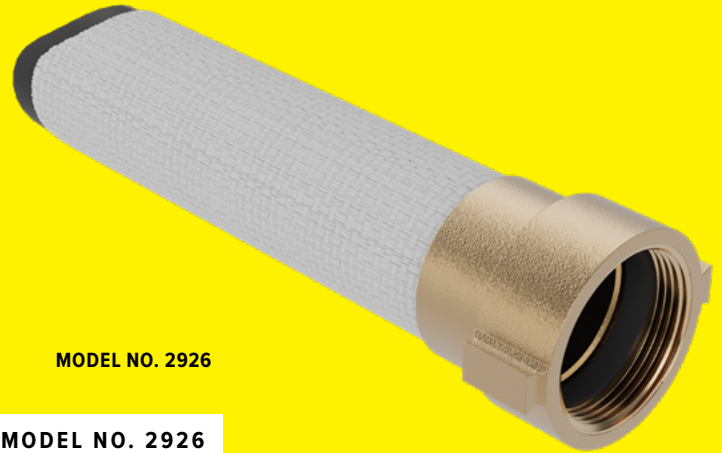


MODEL NO. 2915

MODEL NO. 2915 AND 2916

RACK AND REEL HOSE – POLY FLEX

The most compact lined hose available. Replaces unlined linen hose. For interior standpipe use only.



MODEL NO. 2926

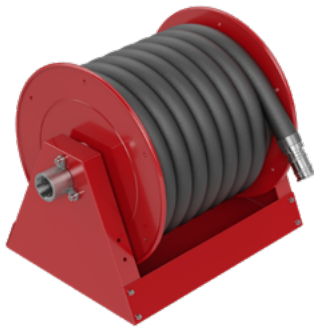
MODEL NO. 2926

RACK AND REEL HOSE – SUPER FLEX

For use with hose rack and reel assemblies where greater service life is required.

HOSE, HOSE STORAGE, AND NOZZLES

HOSE STORAGE



MODEL NO. 2842

MODEL NO. 2836 TO 2842

CONTINUOUS FLOW HOSE REELS

This continuous flow hose reel features a red, glossy polyester-coated steel drum, rims, a universal mounting stand, a feM N.P.T. inlet, and a M N.S.T. hose outlet. Inlet size and hose capacity vary by model.



MODEL NO. 2866

MODEL NO. 2866 TO 2868

1 1/2" HOSE REEL ASSEMBLIES WITH WATER RETENTION DEVICE

This hose reel assembly provides a quick and efficient way to control fires. It allows for one-person operation and meets the nationally recognized standard of 100 GPM (378 1/2 LPM) at 65 PSI (4 1/2 bars) at the valve outlet.



MODEL NO. 2890

MODEL NO. 2890

HUMP-TYPE HOSE STORAGE RACK

Hose rack stores hoses in horizontal folds with a raised center to reduce the weight of the folds, thereby extending hose life. Made from steel with a powder-coated red finish, labels, and wall brackets for 180° swing.



MODEL NO. 2891

MODEL NO. 2891

COLUMN HOSE HANGER

Column-style hose hangers are installed in protected areas to minimize damage from mobile equipment. Unit features 12 gage steel construction and a red polyester coating. The upper hanger is spring loaded for easy hose storage. Hanger accommodates a maximum of 100ft (30.4m), 1 1/2 inch (3.8 cm) or 2 1/2" (6.4cm) hose.

NOZZLES



MODEL NO. 2960

MODEL NO. 2960

ADJUSTABLE NOZZLES POLYCARBONATE W/ BUMPER

Red injection molded polycarbonate nozzle with rubber bumper. Size as selected by model number.



MODEL NO. 2962

MODEL NO. 2962

PRODUCT FUNCTION

Used on class A and B fires in most industrial applications, including hose rack and reel assemblies. Adjustments from fog to straight stream to shutoff.



MODEL NO. 2972

MODEL NO. 2971, 2972, & 2973

PRODUCT FUNCTION

U/L cast brass nozzle with satin finish and rubber bumper. Size as selected by Model Number.

- MODEL NO. 2971** 1" Size
- MODEL NO. 2972** 1 1/2" Size
- MODEL NO. 2973** 2 1/2" Size



MODEL NO. 2995

MODEL NO. 2995

Aluminum Single-Gallonage Constant Flow Fog Nozzle

ALL POTTER ROEMER CABINETS are furnished with a galvanized steel tubular door and frame with a continuous steel hinge (brass pin). Steel corners are welded and ground smooth. All components are powdercoated with an electrostatically-applied, thermally-fused, recoatable white polyester finish. Optional door and frame metals are aluminum, stainless steel, brass, and bronze. Proper cabinet selection depends on contents, mounting style, and door style.



MODEL NO. 2510



MODEL NO. 3005



MODEL NO. 4065

STEPS TO SELECT A CABINET

STEP 1:

WHAT WILL THE CABINET CONTAIN:

FIRE HOSE RACK, FIRE EXTINGUISHER, FIRE DEPARTMENT VALVE?

STEP 2:

CHOOSE THE MOUNTING STYLE:

RECESSED, TRIMLESS, SEMI-RECESSED, OR SURFACE.

STEP 3:

CHOOSE THE CABINET MATERIAL:

STEEL, ALUMINUM, STAINLESS STEEL, BRASS, OR BRONZE.

STEP 4:

CHOOSE THE DOOR STYLE:

FULL GLASS

BREAKGLASS

DUO PANEL

VERTICAL DUO PANEL

FLUSH SOLID METAL

STEP 5:

SELECT CONTENTS:

FIRE HOSE RACK

FIRE EXTINGUISHER

FIRE DEPARTMENT VALVE

FIRE RATED



MODEL NO. FRC1506-A

FIRE-RATED CABINETS

- UL Classified Listing No. 7N43 ANSI/UL 1479
- Rated for 1 & 2 Hour Wall Systems
- Heavy Gauge, Galvanized Steel Construction
- Corrosion Resistant Polyester Powder-Coated Finish



MODEL NO. FRC1870-A



FIRE HOSE CABINETS

POTTER ROEMER HOSE CABINETS FEATURE DURABLE STEEL CONSTRUCTION, with a 20 gauge galvanized steel door, 18 gauge frame, and a continuous steel hinge. The cabinets are designed in a variety of sizes to accommodate 50', 75' or 100' of poly flex or super flex hose as well as a fire extinguisher if needed. Recessed, semi-recessed, surface-mounted, or trimless mounting options are available.



MODEL NO. 1004-A

1000 SERIES

FOR USE WITH 1-½" FIRE HOSE RACK ASSEMBLY.

ADA MODELS AVAILABLE

1002, 1004, 1006, 1012, 1014, 1016, 1022, 1024, 1026



MODEL NO. 1102-A

1100 SERIES

FOR USE WITH 2-½" X 1-½"

REDUCING FIRE HOSE RACK ASSEMBLY

ADA MODELS AVAILABLE

1102, 1104, 1106, 1112, 1114, 1116, 1122, 1124, 1126



MODEL NO. 1204-A

1200 SERIES

FOR USE WITH 1-½" FIRE HOSE RACK ASSEMBLY AND 2-½" FIRE DEPARTMENT VALVE

ADA MODELS AVAILABLE

1204, 1206, 1208, 1214, 1216, 1218, 1224, 1226, 1228

FIRE HOSE AND EXTINGUISHER CABINETS



1300 SERIES

1½" Fire Hose Rack and Extinguisher Cabinet

PRODUCT FUNCTION

1300 Series cabinets accommodate a single 1½" (3.8cm) fire hose rack assembly with either Polyflex or PR-Superflex hose and a portable fire extinguisher.

ADA MODELS AVAILABLE

1302, 1304, 1306, 1312, 1314, 1316, 1332, 1334, 1336, 1342, 1344, 1346



MODEL NO. 1302



MODEL NO. 1402-A

1400 SERIES

2½ x 1½" Fire Hose Rack and Extinguisher Cabinet

PRODUCT FUNCTION

1400 Series cabinets accommodate a single 2½"x1½" (6.4x3.8cm) fire hose rack assembly with either Polyflex or PR-Superflex hose and a portable fire extinguisher.

ADA MODELS AVAILABLE

1402, 1404, 1406, 1412, 1414, 1416, 1432, 1434, 1436



MODEL NO. 1506-A

1500 SERIES

1½" Fire Hose Rack, 2½" Fire Dept. Valve and Extinguisher Cabinet

PRODUCT FUNCTION

1500 Series cabinets accommodate a single 1½" / 3.8 cm fire hose rack assembly with either Polyflex or PR-Superflex hose and a portable fire extinguisher and a 2½"/6.4 cm fire dept valve with cap and chain.

ADA MODELS AVAILABLE

1504, 1506, 1508, 1514, 1516, 1518, 1534, 1536, 1538

FIRE EXTINGUISHER CABINETS



MODEL NO. 1704-A

1700 SERIES

Cabinet for Portable Fire Extinguisher

PRODUCT FUNCTION

1700 Series cabinets accommodate a single portable fire extinguisher.

REGULARLY FURNISHED

20 ga. box, 20 ga. galvanized door with 20 ga. frame and a continuous steel hinge (brass pin). Steel corner seams welded and ground smooth. Recessed, semi-recessed and surface mounted cabinets are furnished with square edges. All components are powder-coated with an electrostatically-applied, thermally-fused, recoatable white polyester finish. Wall mounting and size of cabinet as selected by model number.

ADA MODELS AVAILABLE

1702, 1704, 1706, 1708, 1712, 1714, 1716, 1718, 1724, 1734, 1736, 1738, 1746, 1748



3000 SERIES

ABC Multi-Purpose Dry Chemical Portable Fire Extinguisher

PRODUCT FUNCTION

Used to provide protection against class A, B, and C fires

REGULARLY FURNISHED

Red glossy polyester-coated steel cylinder with pressure gauge, wall mounting bracket and hose or nozzle as indicated. Contents stored under pressure at approximately 195 PSI (13.4 bars).

MODELS AVAILABLE:

3002, 3005, 3010, 3020

3400 SERIES

Carbon Dioxide Portable Fire Extinguisher

PRODUCT FUNCTION

Used to provide protection against class B and C fires.

REGULARLY FURNISHED

Red glossy polyester-coated aluminum cylinder with discharge horn and wall bracket. Contents pressurized at approximately 735 PSI (50.6 bars) at 70° F (21° C).

MODELS AVAILABLE:

3405, 3410, 3415, 3420

3100 SERIES

Halotron 1 and BrX Portable Fire Extinguisher

PRODUCT FUNCTION

Used to provide protection against B and C Class Fires.

REGULARLY FURNISHED

Red glossy polyester coated steel cylinder fire extinguisher with "Clean Agent" that rapidly evaporates and leaves no residue. Recommended for electrical equipment fires.

MODELS AVAILABLE:

3102, 3105, 3109, 3111, 3112, 3115

MODEL NO. 3202

Pressurized Water

PRODUCT FUNCTION

Used to provide protection against Class A fires.

REGULARLY FURNISHED

Stainless Steel shell with pressure gauge and wall mounting bracket. Shipped empty to be charged at destination by authorized personnel.

THE HEART HAS A NEW HOME

MGI ConTrols® has acquired the Elkhart-brand Pressure Reducing Valve product line. While the Elkhart name remains on the products for a limited time, ownership and manufacturing have moved to MGI ConTrols®, a Potter Roemer® brand.

For nearly 90 years, Potter Roemer® has delivered trusted performance in valve manufacturing—and now we're proud to offer a complete line of fire suppression valves under the MGI ConTrols® name, with the same reliability you've come to expect.

Elkhart is a registered trademark of Elkhart Brass® used here for reference only.

REDUCE THE PRESSURE, PROTECT WHAT MATTERS

MODEL NO. 4023-FA2



MODEL NO. 4065-EV



FEATURES

- Reliable Under Pressure
- Trusted in the most critical moments—Potter-Roemer PRVs meet or exceed NFPA 13/14 and UL/FM standards.
- Built for Compliance. Engineered to Perform.
- Easy-to-install, field-testable, and tamper-resistant designs meet evolving code requirements.

- Valves You Can Trust
- We have nearly 90 years experience in manufacturing valves and are proud to bring you a complete line of fire suppression valves.
- Protecting Lives, Property, and Pressure Zones
- Designed for consistent downstream pressure in high-rise and industrial fire protection systems.



MODEL NO. 4005-FA2



MODEL NO. 4053-FS2



MODEL NO. 4042-FS2

SEE POTTER ROEMER'S COMPLETE FIRE VALVE SELECTION HERE:





Potter Roemer Fire Pro's Flush Fire Department Inlet Connections are used as an auxiliary connection to supplement the fire protection water supply.

MANUAL/STATION MONITORS



750 GPM, STATION MONITOR

This model features carbon steel construction and type 304 stainless steel swivels. Type 304 ball bearings in joints ensure easy movement and reliable operation. This monitor has a standard red polyester powder coating inside and out to protect against corrosion and offers 360° horizontal and 120° vertical travel.

750 GPM SNORKEL MONITOR

Carbon Steel construction with 304 stainless steel swivels. Standard red polyester powder coating inside and out protect against corrosion. Type 304 stainless steel ball bearings in joints ensure easy movement and reliable operation.

PORTABLE MONITORS



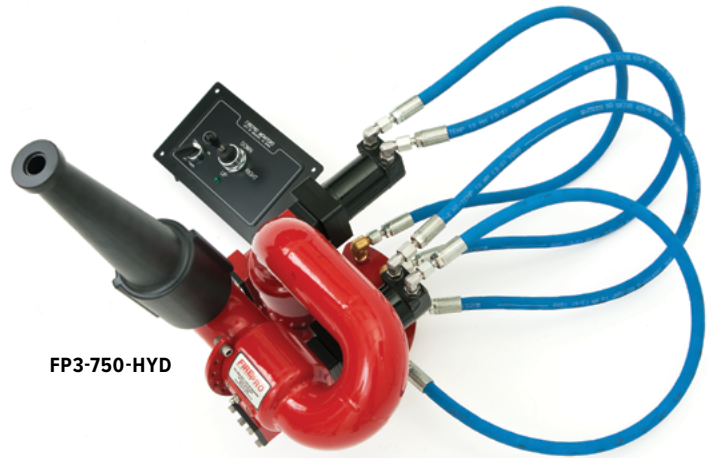
1200 GPM CHARGER MONITOR

This 2-wheel trailer portable monitor is designed for applications with high flow/reach requirements. The balanced flow, single waterway design and precision machining on swivel joints reduces friction loss, improves stream and distance, and ensures ease of operation at all pressure/ flow ranges. The monitor features Carbon Steel construction with type 304 stainless steel swivels. Type 304 stainless steel ball bearings in joints ensure easy movement and reliable operation. Standard red polyester powder coating inside and out protects against corrosion. This monitor offers 360° horizontal and 120° vertical travel.

350 GPM TRUCK MOUNT MONITOR

This portable monitor is designed to be mounted on a truck and is designed with a 1½" NH swivel to be used with a soft hose. The balanced flow single waterway design and precision machining on swivel joints reduces friction loss while improving stream and distance, and ensures ease of operation at all pressure/ flow ranges. Carbon Steel construction with 304 stainless steel swivels. Standard red polyester powder coating inside and out protect against corrosion. Type 304 stainless steel ball bearings in joints ensure easy movement and reliable operation.

REMOTE CONTROL MONITORS



750 GPM ELECTRIC MONITOR

This electric remote control monitor features a 2-½” waterway, seamless carbon or stainless steel construction, 340° horizontal and 135° vertical travel, and stainless steel remote joystick box. Choose 12 or 24 volt option.

HYDRAULIC MONITOR

This hydraulic remote control monitor has a carbon steel waterway inside and out and stainless steel swivels. A control panel is included. This model has a 3” (76cm) 150# RF flange inlet, 2-½” (64mm) M NH outlet, 150 degree vertical sweep, 340 degree horizontal sweep, and 250-1,000 GPM (949-3785 LPM) 50-150 PSI operating pressure, with an optimum operating pressure of 120 PSI.

ELEVATED MONITORS

FP900303

This freestanding monitor has an “inner” waterway with an outer drive tube for horizontal movement at the base, along with vertical motion handle control with stainless steel cable attached to the monitor for vertical option. Flow rate up to 1000GPM.



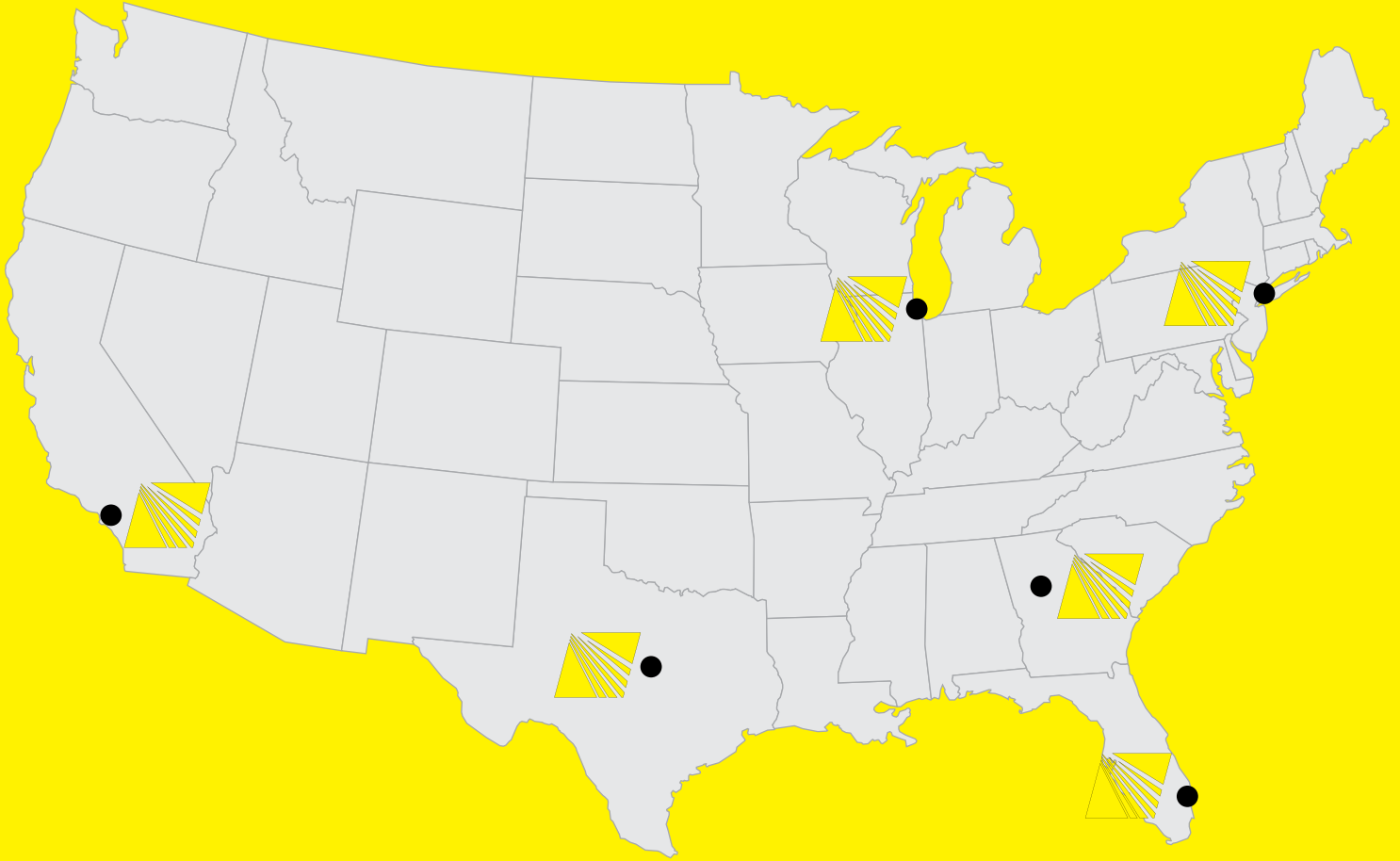
FP900203

Self-supported with base intake, flow rate up to 1000GPM.



MORRIS GROUP INTERNATIONAL

WWW.MORRISGROUPINT.COM



LOS ANGELES (HEADQUARTERS)

17451 Hurley Street
City of Industry, CA 91744
626-855-4890

CHICAGO

1350 N. Michael Drive
Wood Dale, IL 60191
630-766-4545

NEW YORK CITY

1480 Ridgeway Street
Union, NJ 07083
908-946-5775

DALLAS


1500 Precision Drive, Suite 120
Plano, TX 75074
972-516-1800

ATLANTA

4110 Tench Road, Suite J
Suwanee, GA 30024
770-904-3350

MIAMI

8306 NW 14th Street
Miami, FL 33126
786-845-0842

 **WARNING:** Cancer and Reproductive Harm - www.P65Warnings.ca.gov



PHONE: (800) 591-9683
E-MAIL: INFO@POTTERROEMER.COM
WEBSITE: POTTERROEMER.COM

L1001700 | 0226