

20" SLAB Console



Model Shown: 9109-S-H38-D4S-D4D-D11D
20" Long SLAB Console, Satin Finish Frame, Blanco Solid Surface Drawers,
Configured for a 3-Hole 8" Centerset Faucet Supplied by Customer

- **20" LONG CAST WHITE SOLID SURFACE DECK WITH INTEGRAL BASIN IN STAINLESS STEEL CONSOLE FRAME**
- **BASIN IS INTEGRAL TO WHITE SOLID SURFACE DECK - ENTIRELY CAST IN ONE PIECE OF WHITE-COLORED POLYMER RESIN**
- **STAINLESS STEEL FRAME CONSTRUCTION IN SATIN MIRA (HIGH POLISH)**
- **INTEGRATED OVERFLOW WASTE OUTLET**
- **ADJUSTABLE LEVELERS FOR UNEVEN FLOORS**
- **MATERIAL OF CONSTRUCTIONS PHYSICAL PROPERTIES IN COMPLIANCE WITH:**

**CSA B45.5/IAPMO Z124
ANSI/APA SS-1**

(REFER TO TECHNICAL DATA SHEET FOR COMPLETE DETAILS)

- **GREENGUARD CERTIFIED FOR LOW EMISSIONS**



ADA COMPLIANT

DESCRIPTION	MODEL/OPTION #
A ORIENTATION - Required Selection	INIT.
<input type="checkbox"/> Console 20" L x 22" W x 34" H (508 x 559 x 864 mm) with 14" L x 17" W x 4" H (356 x 432 x 102 mm) Basin	9109

Add (+)	B FRAME - Required Selection	INIT.
	<input type="checkbox"/> Satin Finish (Standard)	-S
	<input type="checkbox"/> Mira Finish (High Polish)	-HP
Add (+)	C COUNTER COLOR SELECTION - Req'd Selection	INIT.
	Corterra® Solid Surface Color	
	Color: _____	
	(Refer to https://www.neo-metro.com/luxury-solid-surface for available colors)	
Add (+)	D BASIN SELECTION - Required Selection	INIT.
	<input type="checkbox"/> Square Basin 14" L x 14" W x 4" H Basin (356 x 356 x 102 mm)	-BBSQ
	<input type="checkbox"/> Round Basin Ø16" Basin (Ø 406 mm)	-BBRD
	Overflow Waste is Built-in Specify Plate Finish:	
	<input type="checkbox"/> Satin (Standard) <input type="checkbox"/> High Polish	
Add (+)	E OPTIONS	INIT.
	Optional Storage Shelf	
	<input type="checkbox"/> Blanco Solid Surface	-SWB
	Optional Stainless Steel Towel Bar	
	<input type="checkbox"/> Satin Finish	-TBS
	<input type="checkbox"/> Mira (high polish)	-TBS-HP
Add (+)	F FAUCET CONFIG. - Optional Selection	INIT.
	<input type="checkbox"/> No Faucet Hole For wall mounted faucet	-H0
	<input type="checkbox"/> Single Hole Ø1-5/16" Centered Hole	-H1
	<input type="checkbox"/> 6" Centerset (152 mm)	-H36
	<input type="checkbox"/> 8" Centerset (203 mm)	-H38
	Customer is required to submit Faucet Spec Sheet to confirm compatibility with Neo-Metro's faucet drilling.	
Add (+)	G DRAWER CONFIG. - Optional Selection	INIT.
	<input type="checkbox"/> 4" Short Depth Drawer	-D4S
	<input type="checkbox"/> 4" Std. Depth Drawer	-D4D
	<input type="checkbox"/> 11-1/2" Std. Depth Drawer	-D11D

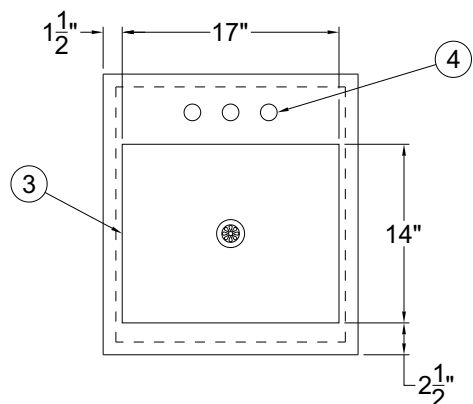
Latest product information www.neo-metro.com

20" SLAB Console

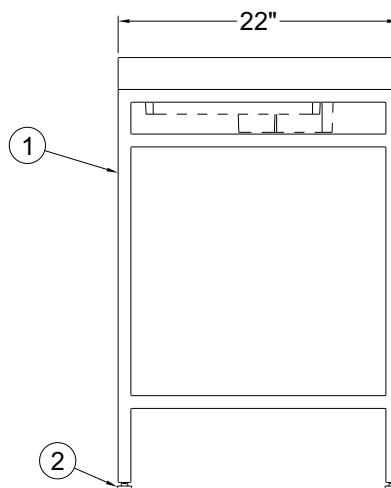
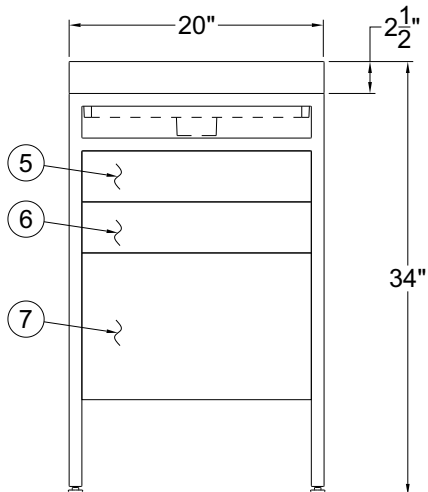
PRODUCT Specification . . . The 20" Slab Console /Table includes a 2-1/2" (64mm) thick solid surface Deck with an integral 14" x 17" x 4" depth (356 x 432 x 102mm) solid surface Basin. Solid Surface Basin comes with 1-1/4" Drain hole is provided to accommodate any Drain assembly with Overflow (Drain and P-Trap not included). The Frame is constructed out of Satin Finish (standard) stainless steel

rectangular Tubing. The stainless steel Frame is also available in Mira Finish. The Solid Surface Countertop is available in a variety of standard colors. An optional Storage Shelf and Drawers are available. Adjustable Levelers are provided on each Leg for uneven floors. Installation instructions are provided.

Neo-Metro assumes no responsibility for use of void or suspended data. All dimensions are nominal and subject to manufacturer change without notice.



- ① STAINLESS STEEL SQUARE TUBING FOR LEGS AND FRAME
- ② ADJUSTABLE LEVELERS (ALL 4 LEGS)
- ③ 17" X 14" INTEGRAL BASIN
- ④ OPTIONAL -H36 THREE HOLES WITH 6" CENTERS FOR VALVE BY OTHERS
- ⑤ OPTIONAL -D4S 4" SHORT DEPTH
- ⑥ OPTIONAL -D4D 4" STANDARD DEPTH
- ⑦ OPTIONAL -D11D 11-1/2" STANDARD DEPTH



APPROVAL FOR MANUFACTURE

COMPANY: _____

PROJECT NAME: _____

SIGNEE'S NAME WRITTEN CLEARLY: _____

DATE: _____

AUTHORIZED SIGNATURE: _____

⚠ WARNING: Cancer and Reproductive Harm - www.P65Warnings.ca.gov

NEO-METRO® by ACORN®

A Member of Morris Group International

15125 Proctor Avenue • City of Industry, CA 91746 USA
TF 800.488.8999 • PH 626.366.4561 • FX 626.961.2200