


Contour Toilet Top Supply



Model 8955-T-1
Contour Toilet
Top Supply, Off-Floor

All toilets specified on this sheet are configured with a 1-1/2" NPTE top spud inlet for a top supply (exposed) flush valve (flush valve sold separately).

- **Commercial SIPHON JET Toilet**
Requiring Commercial Water Supply Line to Operate. Water Flow Pressure 35 psi (2.41 bars); Water Supply Line 1"(25 mm).
- **TOP SUPPLY (Exposed) Flush Valve Configuration**
Compatible Flush Valve (Sold Separately) Releases 1.6 Gallons (6 Liters) per Flush. Wall Supply Flush Valve configurations are also available.
- **16-Gage STAINLESS STEEL CONSTRUCTION**
Satin Finish is Standard; Also Available in Mira (High Polish) Finish
- **Mounting/Wall Waste Configurations:**
(-1) Off-Floor, Wall Waste
(-2) On-Floor, Wall Waste
(-3) On-Floor, Floor Waste
- **ELONGATED TOILET BOWL**
Punched for Toilet Seat with 5-1/2" (140 mm) Mounting Centers.
- **ADA Compliant Toilets Available** 
- **ANSI A112.19.2 Compliant** 

Stainless
Steel Toilets
are Recyclable



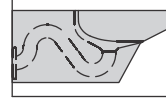
DESCRIPTION

MODEL/OPTION

CONFIGURATION - Required Selection

INIT.

TOP SUPPLY COMMERCIAL CONTOUR TOILET



Off-Floor, Wall Waste Configuration

- ☐ **Satin Finish** (Standard) 8955-T-1
- ☐ **Mira Finish** (High Polish) 8955-T-1-HP



ADA COMPLIANT

Properly mounted 8955-T-1 toilets are ADA Compliant. ADA compliance is subject to the interpretation and requirements of local code authority. Please check your local ADA regulations.



On-Floor, Wall Waste Configuration

- ☐ **Satin Finish** (Standard) 8955-T-2
- ☐ **Mira Finish** (High Polish) 8955-T-2-HP



ADA COMPLIANT (3" taller toilet for compliance)

- ☐ **Satin Finish** (Standard) 8955-ADA-T-2
- ☐ **Mira Finish** (High Polish) 8955-ADA-T-2-HP



On-Floor, Floor Waste Configuration

- ☐ **Satin Finish Toilet** 8955-T-3
- ☐ **Mira Finish Toilet** 8955-T-3-HP



ADA COMPLIANT (3" taller toilet for compliance)

- ☐ **Satin Finish** (Standard) 8955-ADA-T-3
- ☐ **Mira Finish** (High Polish) 8955-ADA-T-3-HP



APPROVAL FOR MANUFACTURE

COMPANY: _____

PROJECT NAME: _____

SIGNEE'S NAME WRITTEN CLEARLY: _____

DATE: _____

AUTHORIZED SIGNATURE: _____



Contour Toilet Top Supply



**Contour Toilet
Top Supply**

Model 8955-T-2
On-Floor, Wall Waste

All toilets specified on this sheet are configured with a 1-1/2" NPTE top spud inlet for a top supply (exposed) flush valve (flush valve sold separately).

**Orders will not be
processed until
specification sheets
are complete and signed.
NO CANCELLATIONS.**

DESCRIPTION

MODEL/OPTION #

FLUSH VALVE SELECTION

INIT.

Top Supply (Exposed) Flush Valves

Requires commercial water supply to operate; Water flow pressure 35 psi (2.41 bars); Water supply line is 1" (25 mm) diameter; Flush valve releases 1.6 gallons (6 liters) per flush; flush valve sold separately from fixture.



Manual Flush

- ☐ FV1.28-T
- ☐ FV1.6-T



Electronic Sensor

Valve requires 120 VAC, 60Hz
Plug-in Power Supply

- ☐ FV1.28-T-SO
- ☐ FV1.6-T-SO



Battery-Powered Electronic Sensor

Valve requires 4 AA Batteries

- ☐ FV1.28-T-BSO
- ☐ FV1.6-T-BSO

ACCESSORIES

INIT.



In-Wall Mounting Carrier Assembly

2954-720-000

Adds more stability to off-floor fixtures;
Includes left, right legs and waste
connection for ease of installation.

**NOTE: INSTALLATION ON CONCRETE FLOORS
RECOMMENDED. FOR OTHER FLOOR TYPES CONTACT
CARRIER MANUFACTURER.**

FOR USE WITH 8955, OFF-FLOOR ONLY.

Contour Toilet Top Supply

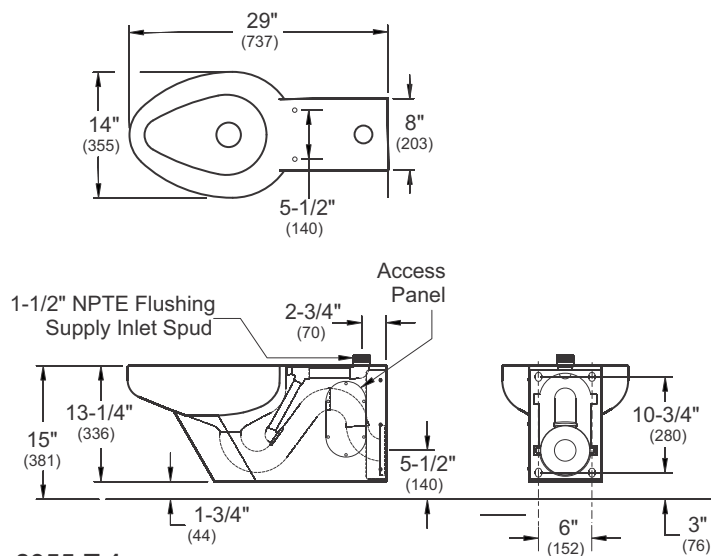
PRODUCT Specification . . . The Contour Toilet is a commercial-grade, siphon-jet toilet, manufactured of 16-gage, type 304 Satin Finish Stainless Steel (Standard). Mira Finish (High Polish) is optionally available. The fixture shall operate with a top supply (exposed) flush valve (sold separately). The toilet bowl is punched for an elongated seat with 5-1/2" (140 mm) mounting centers. The fixture meets ASME/ANSI A112.19.2. The trapway can pass a 2-1/8" (54 mm) ball. Off-Floor toilets (8955-T-1 series) are manufactured with a 13-1/4" (336 mm) overall height but are mounted 1-3/4" (44 mm) off of the floor. On-Floor toilets (both 8955-T-2 and 8955-T-3 series) are manufactured with an overall height of 15" (381mm) and are wall mounted with the base resting on the floor.



ADA On-Floor models are fabricated so that the flood rim of the fixture is 18" (430mm) above finished floor. Off-Floor models may meet compliance if the unit is mounted with a seat height

between 17" to 19" (430 mm - 480 mm) above finished floor. An ADA compliant flush valve is available (sold separately) when specified. ADA compliance is subject to the interpretation and requirements of the local code authority.

PLUMBING Specifications . . . The Contour Toilet with Top Supply is configured for an exposed flush valve and includes a 1-1/2" NPTE flushing inlet connection at the top of toilet housing. The exposed flush valve utilizes a commercial 1" (25 mm) water supply line. Off-Floor toilets (8955-T-1) shall be mounted on the wall with a wall waste rough-in 5-1/2" (140mm) above finished floor. The On-Floor toilets (8955-T-3) shall be mounted to a finished wall with a floor waste 4-1/4" (108mm) from finished wall. (Standard)



8955-T-1
(OFF FLOOR, WALL WASTE)



ADA COMPLIANCY

Model 8955-T-1 toilet can be used to meet ADA compliance if the seat height of the toilet is raised to 17" to 19" (430 mm - 480 mm) above finished floor. Compliance is subject to the interpretation and requirements of local code authority. Please check your local ADA regulations.



Neo-Metro assumes no responsibility for use of void or suspended data. All dimensions are nominal and subject to manufacturer change without notice.

INSTALLATION INSTRUCTIONS ARE AVAILABLE

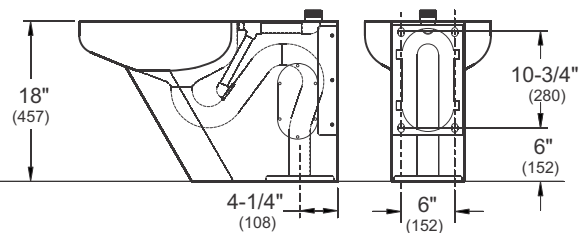
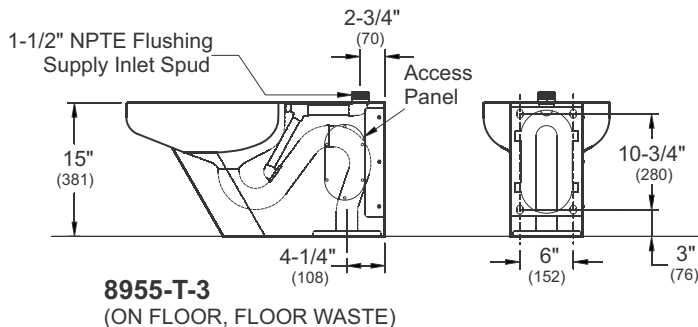
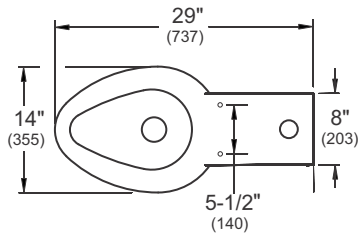
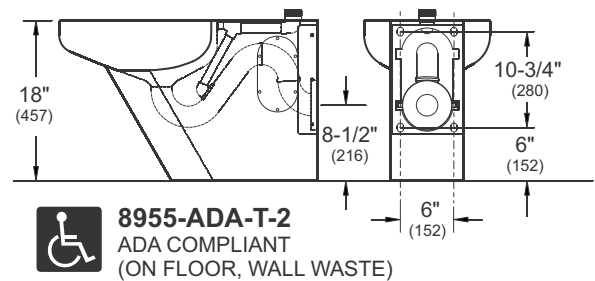
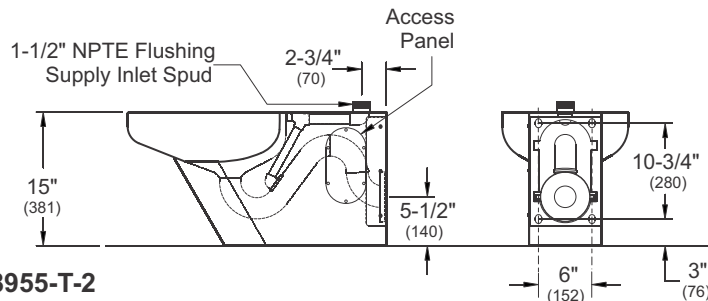
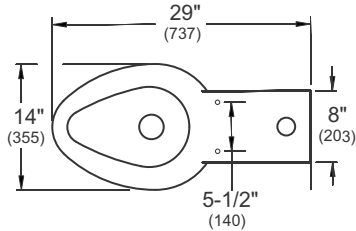
Latest product information www.neo-metro.com

Tech Sheet: **TS8955T** Page **3 of 4** Last Revised: **11/28/22**

NEO - METRO

15125 Proctor Ave. • City of Industry, CA 91746 USA
TF 800.591.9050 • PH 626.855.4854 • FX 626.937.4725
Neo-Metro is Member of Acorn Engineering's Family of Companies

Contour Toilet Top Supply



Neo-Metro assumes no responsibility for use of void or suspended data. All dimensions are nominal and subject to manufacturer change without notice.

INSTALLATION INSTRUCTIONS ARE AVAILABLE