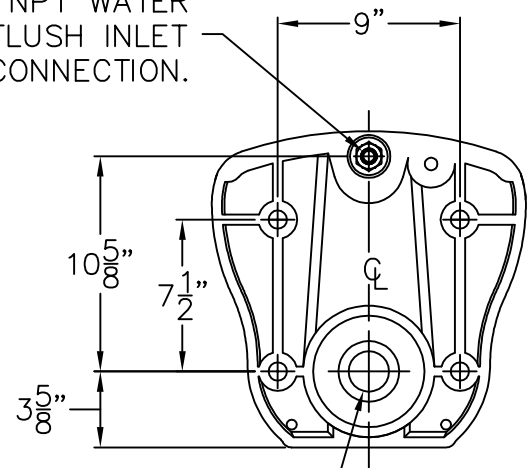



1/2" NPT WATER
FLUSH INLET
CONNECTION.



GASKET WASTE OUTLET.
1-1/2" PIPE ADAPTER
FURNISHED BY ACORNVAC.

AcornVAC MODEL # 2109-W-1 0.45 GPF VITREOUS CHINA VACUUM FLUSH TOILET

AcornVac Vitreous China Vacuum Flush Toilet with elongated bowl intended for front mounting onto a finished wall. Toilet designed for use with AcornVac Vacuum Waste System to flush using only 0.45 gallons of water per flush. Fixture is fabricated of white vitreous china and includes 1/2" NPT water flush inlet adapter and 1-1/2" pipe waste outlet adapter for gasketed carrier fitting. Toilet is rated for a maximum load of 500lbs.

ITEM	QTY.	MODEL NO.	 ACORN VAC, INC 13818 OAKS AVENUE, CHINO, CA 91710 (800) 591-9920 - FAX (909) 902-5041			
JOB		VITREOUS CHINA VACUUM FLUSH TOILET				
LOCATION			DATE	REVISION	DRN. BY	DWG. NO.
ARCH.			02/16/12	B102618	JMT	2109-W-1
M.E.						

DIMENSIONS ARE SUBJECT TO MANUFACTURERS TOLERANCE AND CHANGE WITHOUT NOTICE. WE CAN ASSUME NO RESPONSIBILITY FOR USE OF SUPERSEDED OR VOID DATA. THIS PRINT IS CONFIDENTIAL AND IS LOANED FOR MUTUAL ASSISTANCE. IT IS NOT TO BE FORWARDED TO OTHER PARTIES NOR REPRINTED IN ANY FORM WITHOUT OUR WRITTEN PERMISSION.