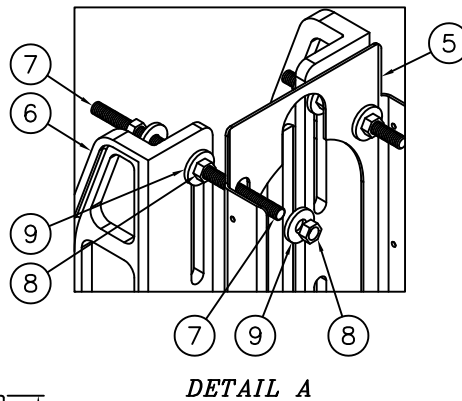
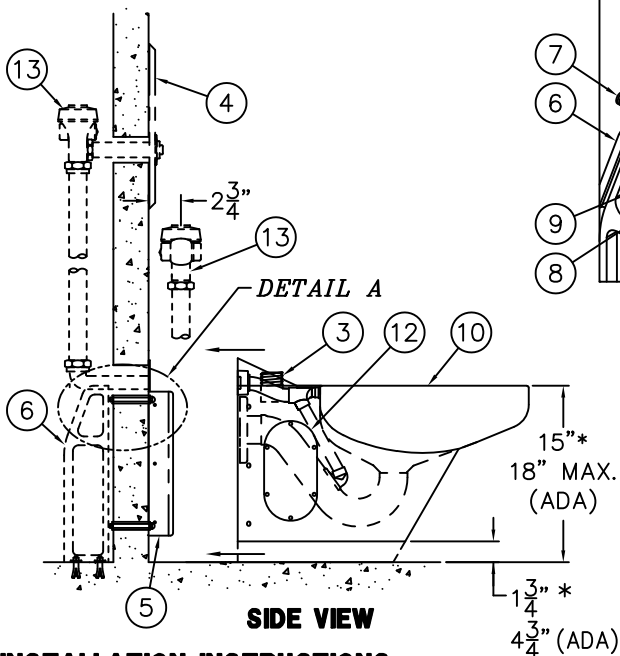
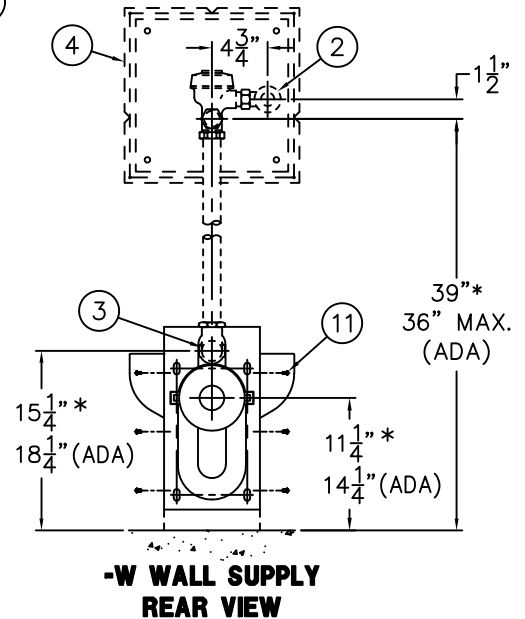


**NOTE: USE ONLY APPROPRIATE UPC/cUPC CERTIFIED FLUSH VALVE FOR THE INSTALLATION OF THIS TOILET.**



**TOILET SHOWN WITH  
OPTIONAL -MC  
MOUNTING CARRIER**



**INSTALLATION INSTRUCTIONS:**

- A- ROUGH-IN FOR THE FOLLOWING:
- 5-1/2" RECESSED GASKET FLANGE (1).
  - FLUSH VALVE INLET 1" NPT (2).
  - FIXTURE FLUSHING INLET 1-1/2" NPT (3).
- B- FOR DURA-WARE FLUSH VALVE ACCESS PANELS (4), FOR CONCEALED FLUSH VALVE INSTALLATION REFER TO DRAWING #9908-399-001.
- C- FOR UNITS WITHOUT MOUNTING CARRIER: POSITION MOUNTING TEMPLATE (5) ONTO FIXTURE SIDE OF REINFORCED WALL LOCATING AS INDICATED. WALL ANCHORS AND FASTENERS ARE BY OTHERS.
- D- FOR UNITS WITH MOUNTING CARRIER: INSTALL CARRIER ON PLUMBING SIDE OF WALL (6) TO FLOOR. ATTACH 1/2" UNC STUDS (7) TO CARRIER (6) USING NUTS (8) & WASHERS (9). ATTACH MOUNTING TEMPLATE (5) ON FIXTURE SIDE OF WALL TO EXISTING 1/2" STUDS (7) WITH NUTS (8) & (9). SEE DETAIL A.

- E- PLACE TOILET (10) UP AGAINST WALL. ATTACH TOILET HOUSING TO MOUNTING TEMPLATE (5) USING 1/4-20 SCREWS (11). SEE DETAIL B.
- F- REMOVE ACCESS PANEL (12) MAKE UP TOILET WASTE CONNECTION.
- G- FOR OPTIONAL -FV FLUSH VALVE: CONNECT FLUSH VALVE (13) AS REQUIRED FOR CONCEALED INSTALLATION PER MANUFACTURER'S RECOMMENDATIONS.

**NOTE:** FOR -ADA UNITS REFER TO ADA ACCESSIBILITY GUIDELINES FOR COMPLETE INSTALLATION REQUIREMENTS. FOR UNITS WITH SUFFIX OPTION -ADA, ALL VERTICAL DIMENSIONS INDICATED \* WILL INCREASE PROPORTIONALLY WITH ADA SEAT HEIGHT. FLUSH VALVE MUST BE HYDRAULICALLY ACTUATED OR SUPPLIED WITH AN ADA HANDLE. MAX CONTROL HEIGHT IS 36" ABOVE FINISHED FLOOR. ADA CONTROLS MUST BE LOCATED ON THE WIDE SIDE OF TOILET.



ACORN ENGINEERING COMPANY  
P.O. BOX 3527 Industry, CA 91744  
15125 Proctor Ave Industry, CA 91746  
(626) 336-4561 FAX (626) 961-2200

TITLE

**BLOWOUT, FRONT MOUNT, OFF/FLOOR, WALL OUTLET 2140-W/T-1/2-FM**

MANUFACTURE DATE

**OCTOBER 1997  
TO PRESENT**

DATE ISSUED

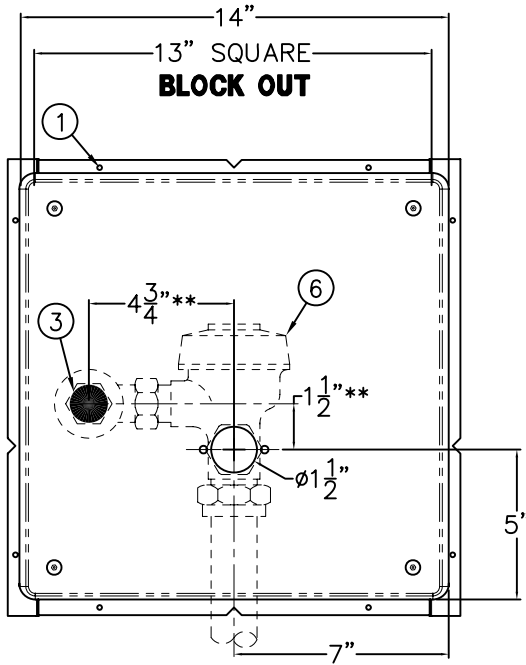
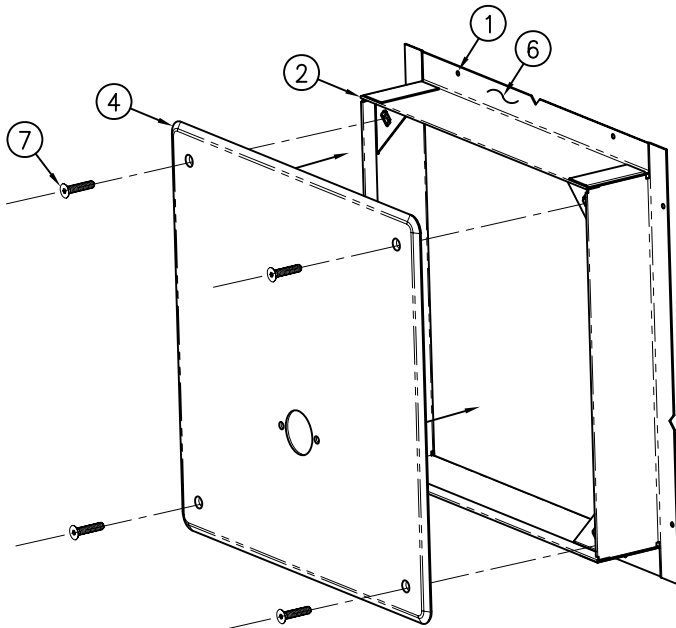
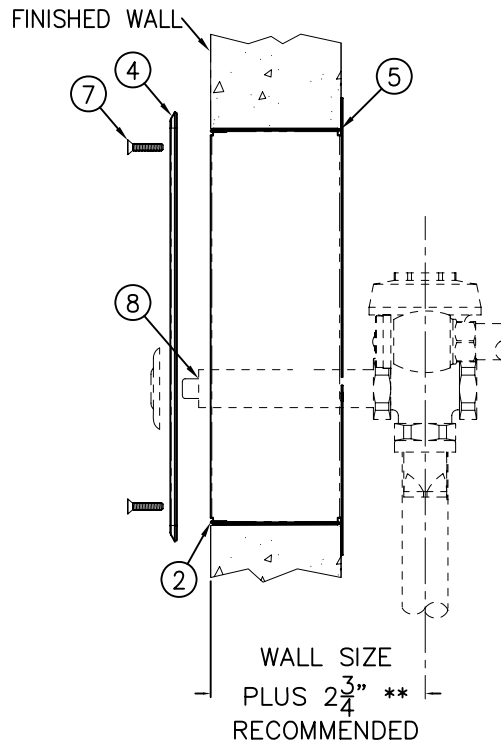
**11/03/97**

DATE REVISED

**12/27/18**

DRAWING NUMBER

**9927-510-001**

**2898 LESS ESCUTCHEON****ROUGH-IN:**

SLEEVES ARE INSTALLED IN FORMS (USING NAIL HOLES (1) PROVIDED) OR GROUTED INTO BLOCK WALLS, BECOMING A PERMANENT PART OF THE WALL. FRONT EDGE OF FRAME (2) SHOULD BE FLUSH WITH FINISHED WALL.

A-FLUSH VALVE INLET 1" NPT (3) TO DIMENSIONS SHOWN.

**INSTALLATION INSTRUCTIONS:**

B-REMOVE STAINLESS STEEL PANEL (4).

C-INSTALL SLEEVE FRAME WITH (5) FLANGE ON PIPE CHASE SIDE OF WALL.

D-INSTALL FLUSH VALVE (6) PER MANUFACTURES INSTALLATION SHEETS.

E- ATTACH (4) PANEL TO (2) FRAME WITH (4) 1/4"-20 x 1" (7) TAMPER-RESISTANT STAINLESS STEEL SCREWS PROVIDED. REFERENCE DRAWING NO. 9951-005-001

F- COMPLETE INSTALLATION USING APPROPRIATE (8) PUSHBUTTON ASSEMBLY PER MANUFACTURERS INSTALLATION PROCEDURES.

**\*\* NOTE:**

FLUSH VALVE BY OTHERS SHOWN FOR REFERENCE ONLY. COMPLETE WITH INSTALLER PROVIDED FLUSH VALVE AND APPROPRIATE PUSHBUTTON ASSEMBLY AS REQUIRED FOLLOWING RECOMMENDED MANUFACTURERS INSTALLATION PROCEDURES.



ACORN ENGINEERING COMPANY  
P.O. BOX 3527 INDUSTRY, CA. 91744  
(626) 336-4561 FAX (626) 961-2200

TITLE

**FLUSH VALVE ACCESS PANEL MODEL 2898**

MANUFACTURE DATE

**JANUARY 1973**  
**TO PRESENT**

DATE ISSUED

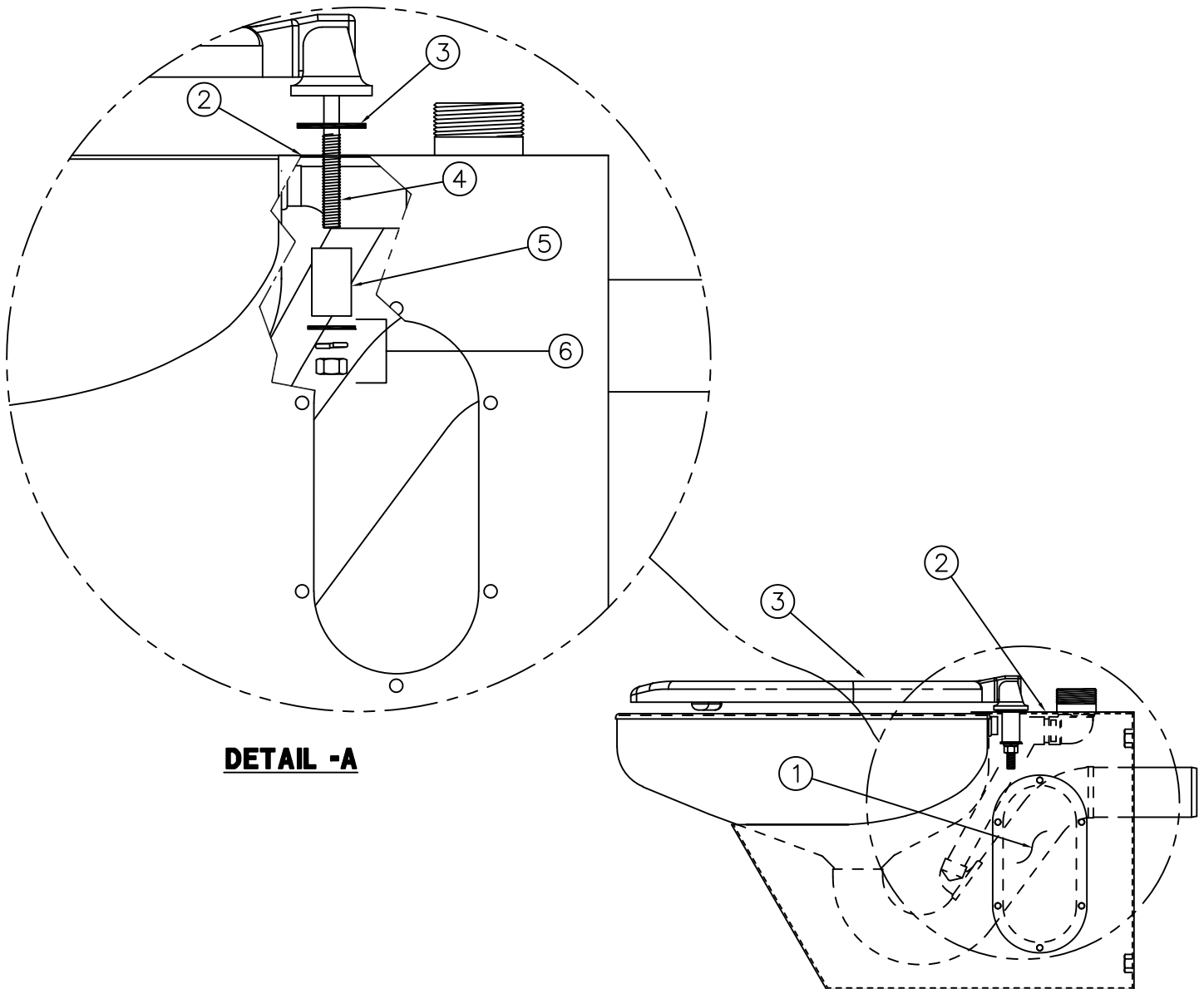
**06/01/90**

DATE REVISED

**10/28/10**

DRAWING NUMBER

**9908-399-001**



**DETAIL -A**

**INSTALLATION INSTRUCTIONS- HINGED  
SEAT AFTER MOUNTING FIXTURE TO WALL**

- A- REMOVE ACCESS PANEL (1) FROM BOTH SIDES OF HOUSING (2).
- B- PLACE RUBBER GASKET (3) ONTO SEAT'S THREADED RODS (4).
- C- POSITION SEAT ONTO TOILET HOUSING (2) AND SLIDE SEAT THREADED RODS (4) THROUGH SPACER (5).
- D- ASSEMBLE HARDWARE (6) AS SHOWN IN DETAIL "A".
- E- ENSURE ALL HARDWARE IS TIGHT AND REPLACE ACCESS PANELS (1) TO HOUSING (2).

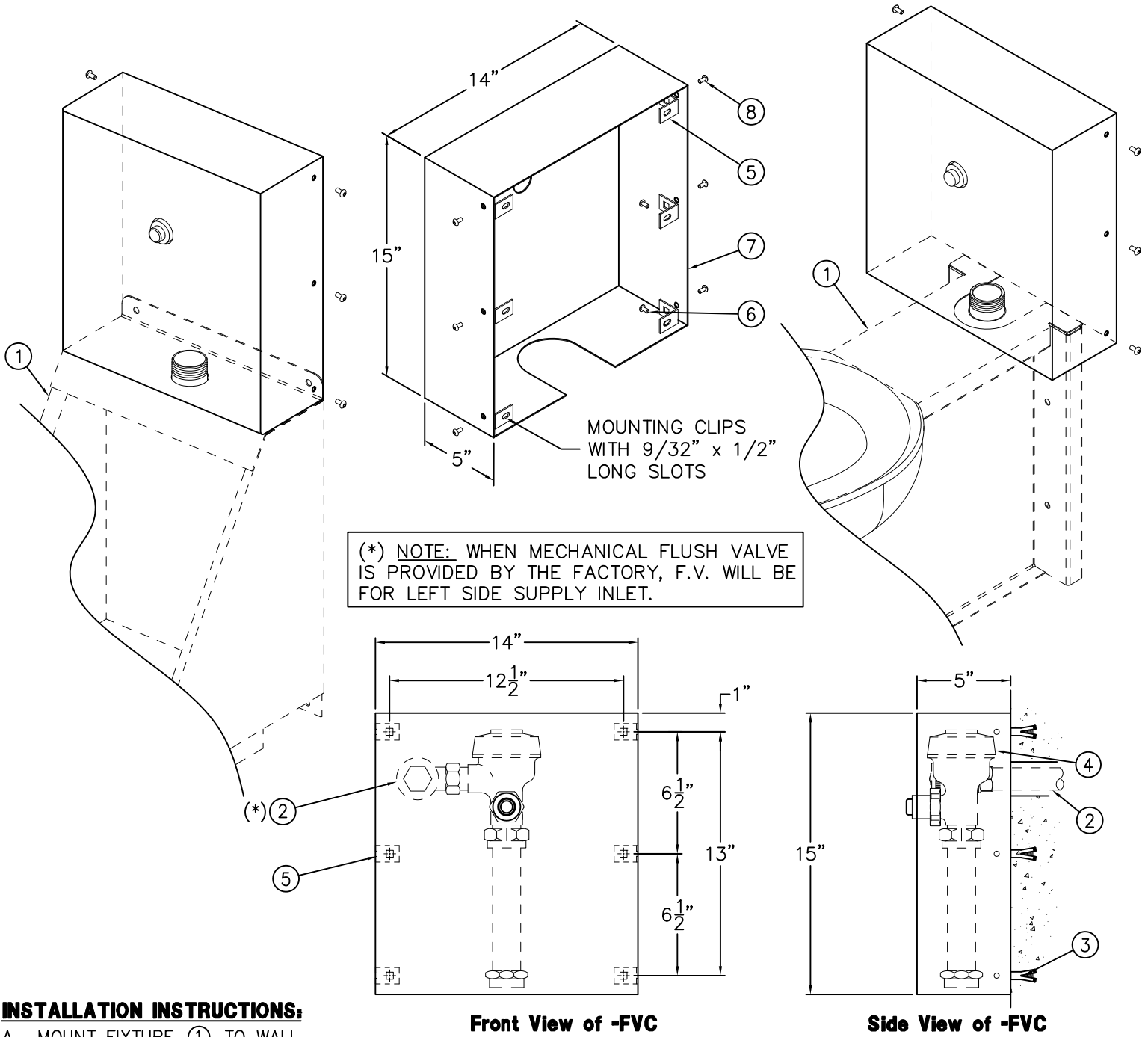
**MORRIS GROUP INTL**  
P.O. BOX 3527 Industry, CA 91744  
MORRIS GROUP INTERNATIONAL 15125 Proctor Ave Industry, CA 91746  
(626) 336-4561 FAX (626) 961-2200

TITLE **-HS HINGED SEAT INSTALLATION DETAIL MERIDIAN TOILETS**

MANUFACTURE DATE  
**APRIL 2008**  
**TO PRESENT**

DATE ISSUED  
**04/08/08**  
DATE REVISED

DRAWING NUMBER  
**9927-527-001**



**INSTALLATION INSTRUCTIONS:**

- A- MOUNT FIXTURE ① TO WALL.
- B- ROUGH-IN FOR FLUSH VALVE SUPPLY ② REFER TO FIXTURE INSTALLATION INSTRUCTIONS.
- C- LOCATE AND INSTALL WALL ANCHORS (BY OTHERS) ③.
- D- INSTALL FLUSH VALVE ④ TO FIXTURE ①.
- E- ATTACH MOUNTING CLIPS ⑤ TO WALL USING MOUNTING SCREWS ⑥ (BY OTHERS).
- F- ATTACH FLUSH VALVE COVER ⑦ TO MOUNTING CLIPS ⑤ USING #10-32 SCREWS ⑧ PROVIDED.

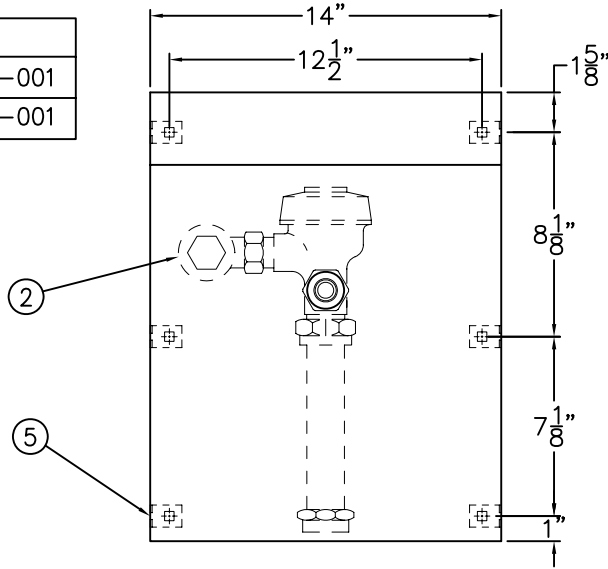
Reference Drawings	
Security Screws	9951-005-001
Tinnerman Nuts	9951-007-001

**NOTE: FIXTURES SHOWN FOR REFERENCE ONLY.**

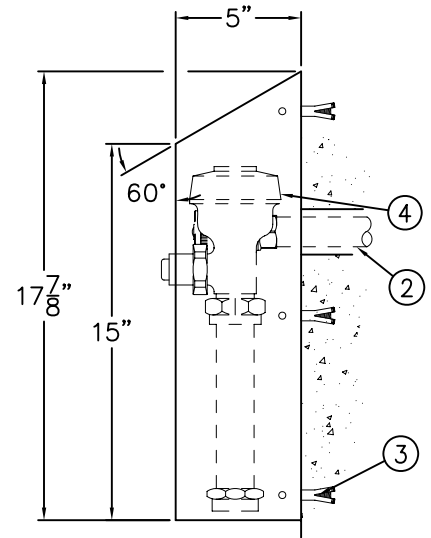
<p>ACORN ENGINEERING COMPANY P.O. BOX 3527 Industry, CA 91744 15125 Proctor Ave Industry, CA 91746 (626) 336-4561 FAX (626) 961-2200</p>	<p>TITLE <b>-FVC FLUSH VALVE COVER #2802</b></p>		
	<p>MANUFACTURE DATE</p> <p><b>FEBRUARY 1975</b></p> <p><b>TO PRESENT</b></p>	<p>DATE ISSUED</p> <p><b>04/17/98</b></p>	<p>DRAWING NUMBER</p> <p><b>9908-395-001</b></p>
		<p>DATE REVISED</p> <p><b>12/21/16 D</b></p>	



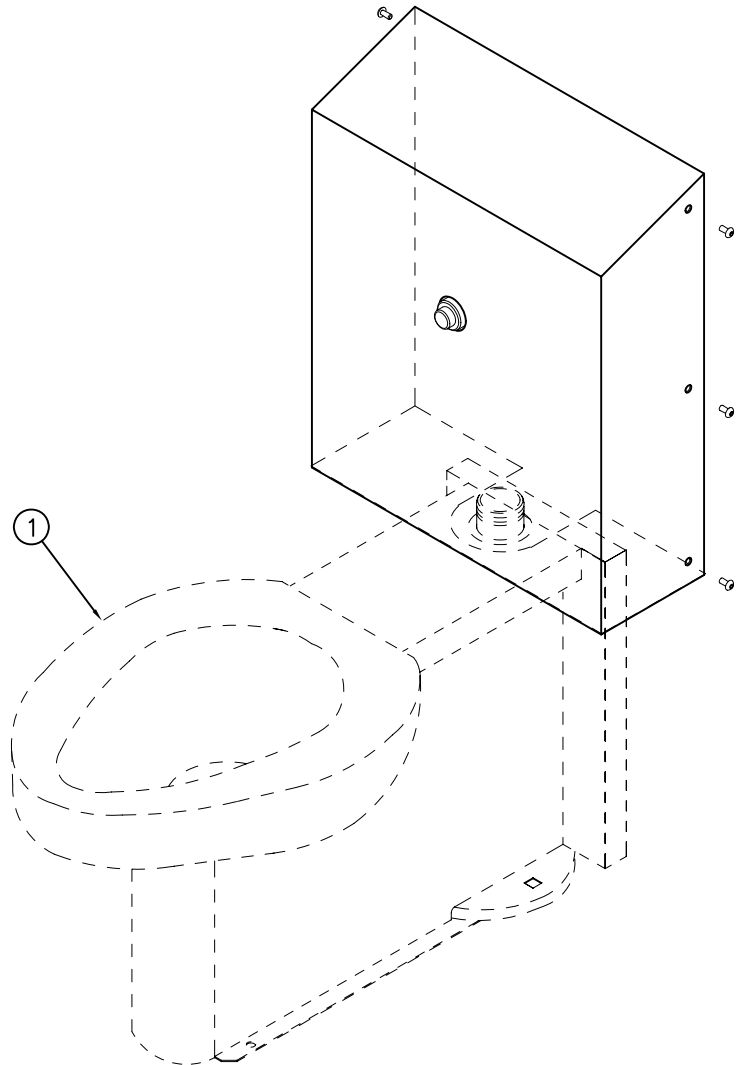
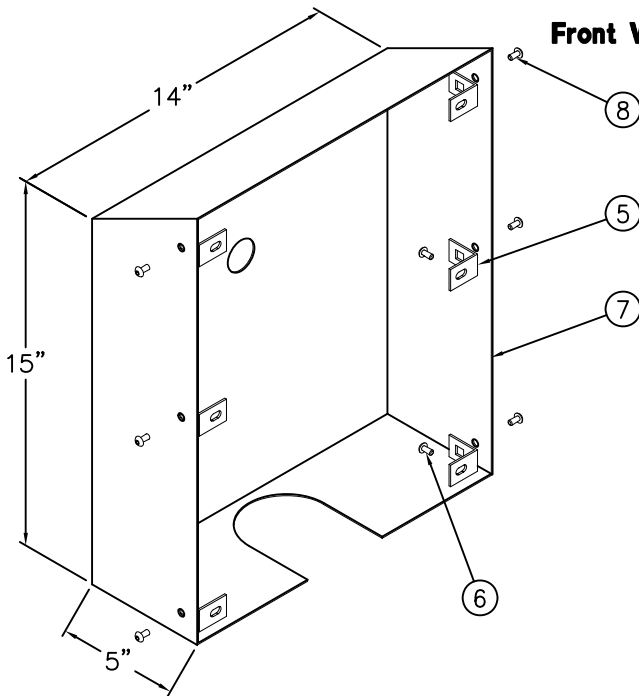
Reference Drawings	
Security Screws	9951-005-001
Tinnerman Nuts	9951-007-001



Front View of -FVC-SLPT



Side View of -FVC-SLPT



## INSTALLATION INSTRUCTIONS

- A- MOUNT FIXTURE TO WALL (1).
- B- ROUGH-IN FOR FLUSH VALVE SUPPLY (2) REFER TO FIXTURE INSTALLATION INSTRUCTIONS.
- C- INSTALL WALL ANCHORS (BY OTHERS) (3).
- D- INSTALL FLUSH VALVE (4) TO FIXTURE (1).
- E- ATTACH MOUNTING CLIPS (5) TO WALL USING MOUNTING SCREWS (6) (BY OTHERS).
- F- ATTACH -FVC FLUSH VALVE COVER PLATE (7) TO MOUNTING CLIPS (5) USING #10-32 BUTTON HEAD SCREW (8) (PROVIDED).



ACORN ENGINEERING COMPANY  
P.O. BOX 3527 INDUSTRY, CA. 91744  
(626) 336-4561 FAX (626) 961-2200

TITLE

**-FVC-SLPT FLUSH VALVE COVER WITH SLOPING TOP**

MANUFACTURE DATE

**FEBRUARY 1975  
TO PRESENT**

DATE ISSUED

**03/07/11**

DATE REVISED

DRAWING NUMBER

**9908-397-001**