



SUBMITTAL FIELD REFERENCE BOOK

**IT'S SO SIMPLE,
IT'S ELMDOR.**

SLA SERIES

SMD SERIES

AT SERIES

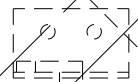
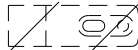
EDI SERIES

PW SERIES

DWB SERIES

 **MORRIS GROUP INTERNATIONAL**

WWW.MORRISGROUPINT.COM



Access Doors	3-30
Valve Boxes	31-33
Roof Pipe Flashing.....	34-35
Roof Hatches.....	36-38
Options.....	39-43

QUICK REFERENCE SHEET

Series	Fire Rated	Roof Mount/Hatch	On Pipes	Wall Mount	Ceiling Mount	Duct Mount	Exterior Mount	High Vandal Resistance	Page No.
1100			•						35
ADW				•	•				4
AI				•	•				5
AP				•					6
AT				•	•				7
ATWT				•			•		8
CFR					•				9
DT						•			10
DW (14 Gage)				•					11
DW (16 Gage)				•					12
DWB				•					13
ED				•	•		•		14
EDI				•	•				15
FR	•			•					16
FRC	•				•				17
GD				•	•				18
GDT						•			19
GFG					•				20
HF				•					21
ML				•					22
ODD						•			23
PW				•					24
RAH		•							37
RAH-CM		•							38
S009/S010				•					25
SF				•					26
SLA				•				•	27
SLK				•					28
SMD				•				•	29
SVB				•					32
VB				•					33
WSR				•	•				30
TSP-1		•							40

ACCESS DOORS





ACCESS DOORS: ADW Series

MODEL NUMBER AND OPTIONS SELECTION

BASE MODEL NUMBER

☐ ADW Dry Wall Aluminum Access Door

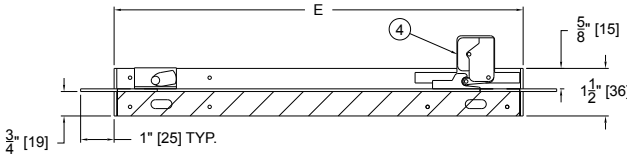
Suffix Options

- ☐ - AKL Allen Key Latch
- ☐ - CL Cylinder Lock (one per door)
- ☐ - CLD Cylinder Lock with Dust Shutter (one per door)

STANDARD AVAILABLE SIZES

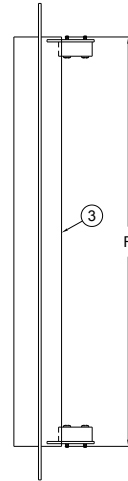
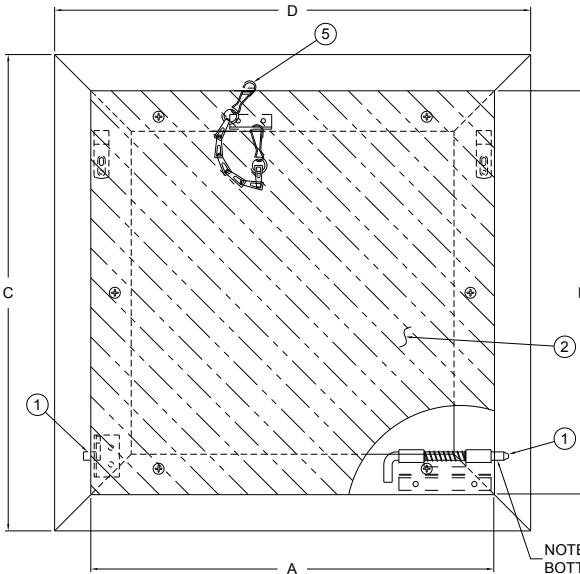
Special sizes available upon request.

NOMINAL SIZE	A	B	C	D	E	F	LATCHES
12" x 12" (305 x 305)	12.00" (305)	12.00" (305)	14.20" (360)	14.20" (360)	12.20" (310)	12.20" (310)	1
16" x 16" (406 x 406)	16.00" (406)	16.00" (406)	18.20" (462)	18.20" (462)	16.20" (411)	16.20" (411)	1
18" x 18" (457 x 457)	18.00" (457)	18.00" (457)	20.20" (513)	20.20" (513)	18.20" (460)	18.20" (460)	1
24" x 24" (610 x 610)	24.00" (610)	24.00" (610)	26.20" (665)	26.20" (665)	24.20" (614)	24.20" (614)	1
24" x 36" (610 x 914)	36.00" (914)	24.00" (610)	26.20" (665)	38.20" (665)	24.20" (610)	36.20" (919)	2



NOTES:

1. CONCEALED HINGE
2. DOOR WITH DRYWALL INSERTED
3. FRAME
4. CONCEALED TOUCH LATCHES
5. SAFETY CHAIN
(FOR DOORS 12" x 12" OR BIGGER)



NOTE: HINGE SHOULD BE ON THE BOTTOM WHEN INSTALLED IN A WALL

Dimensions are subject to manufacturer's tolerance of plus or minus 1/4". Elmdor/Stoneman assumes no responsibility for use of void or suspended data. Please visit www.elmdorstoneman.com for most current specifications. © Copyright 2009 Elmdor/Stoneman, City of Industry, CA. A Division of Acorn Engineering Company.

SELECTION SUMMARY & APPROVAL FOR MANUFACTURING

Model Number & Options	Quantity
Company	Date
Contact	Title
Approval for Manufacturing/Signature	

ADW

Revised: 10/26/16



ACCESS DOORS: AI Series

MODEL NUMBER AND OPTIONS SELECTION

BASE MODEL NUMBER

☐ AI Lightweight Aluminum Access Door

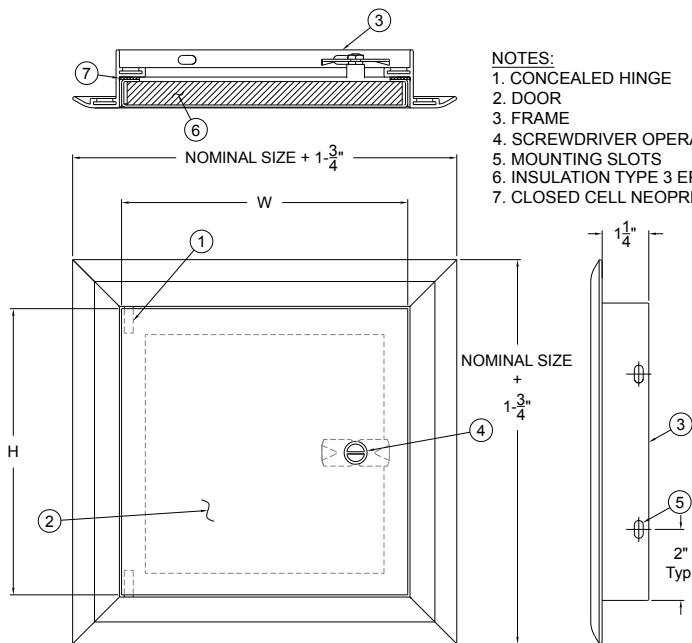
Suffix Options

- ☐ - AKL Allen Key Latch
- ☐ - CL Cylinder Lock (one per door)
- ☐ - CLD Cylinder Lock with Dust Shutter (one per door)

STANDARD AVAILABLE SIZES

Special sizes available upon request.

NOMINAL DOOR SIZE (W x H)	WALL OPENING	LATCHES	WEIGHT
AI 8" x 8"	8-5/8" x 8-5/8"	1	2.0 lbs.
AI 10" x 10"	10-5/8" x 10-5/8"	1	2.5 lbs.
AI 12" x 12"	12-5/8" x 12-5/8"	1	3.0 lbs.
AI 14" x 14"	14-5/8" x 14-5/8"	1	4.0 lbs.
AI 18" x 18"	18-5/8" x 18-5/8"	1	5.0 lbs.
AI 24" x 24"	24-5/8" x 24-5/8"	1	8.0 lbs.
AI 24" x 36"	24-5/8" x 36-5/8"	2	11.0 lbs.
AI 24" x 48"	24-5/8" x 48-5/8"	2	14.0 lbs.
AI 30" x 30"	30-5/8" x 30-5/8"	2	11.0 lbs.
AI 36" x 36"	36-5/8" x 36-5/8"	2	14.5 lbs.
AI 36" x 48"	36-5/8" x 48-5/8"	2	18.25 lbs.



NOTES:

1. CONCEALED HINGE
2. DOOR
3. FRAME
4. SCREWDRIVER OPERATED CAM LATCH
5. MOUNTING SLOTS
6. INSULATION TYPE 3 EPS THERMAL BOARD
7. CLOSED CELL NEOPRENE GASKETING

Dimensions are subject to manufacturer's tolerance of plus or minus 1/4". Elmdor/Stoneman assumes no responsibility for use of void or suspended data.

Please visit www.elmdorstoneman.com for most current specifications. © Copyright 2009 Elmdor/Stoneman, City of Industry, CA, A Division of Acorn Engineering Company.

SELECTION SUMMARY & APPROVAL FOR MANUFACTURING

Model Number & Options	Quantity
Company	Date
Contact	Title
Approval for Manufacturing/Signature	

AI

Revised: 10/25/16



ACCESS DOORS: AP Series

MODEL NUMBER AND OPTIONS SELECTION

BASE MODEL NUMBER

☐ AP Acoustical Plaster Access Door

Suffix Options

- ☐ -AKL Allen Key Latch
☐ -CL Cylinder Lock (one per door)
☐ -CLD Cylinder Lock with Dust Shutter (one per door)
☐ -SS Stainless Steel Construction (Type 304 No. 4 Satin Finish)

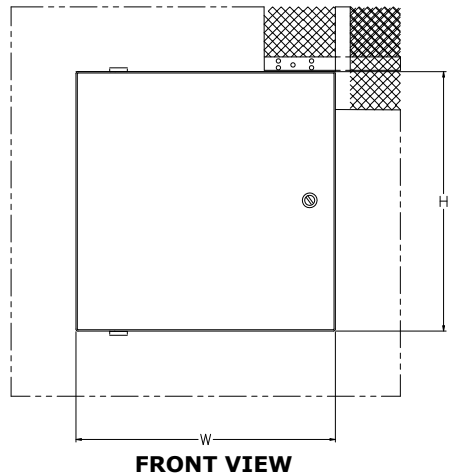
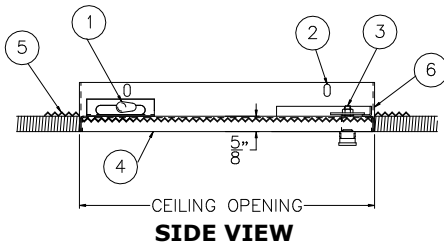
STANDARD AVAILABLE SIZES

Special sizes available upon request.

NOMINAL DOOR SIZE (W X H)	CEILING OPENING (minimum required)	LATCHES	WEIGHT
AP 12" x 12"	12-1/4" x 12-1/4"	1	7 lbs.
AP 12" x 24"	12-1/4" x 24-1/4"	2	13.5 lbs.
AP 18" x 18"	18-1/4" x 18-1/4"	2	14 lbs.
AP 24" x 24"	24-1/4" x 24-1/4"	4	20.5 lbs.
AP 24" x 36"	24-1/4" x 36-1/4"	5	24.5 lbs.

NOTES:

1. CONCEALED HINGE
2. MOUNTING HOLES
3. SCREWDRIVER OPERATED LATCH
4. DOOR
5. METAL LATH
6. FRAME



Dimensions are subject to manufacturer's tolerance of plus or minus 1/4". Elmdor/Stoneman assumes no responsibility for use of void or suspended data. Please visit www.elmdorstoneman.com for most current specifications. © Copyright 2009 Elmdor/Stoneman, City of Industry, CA, A Division of Acorn Engineering Company.

SELECTION SUMMARY & APPROVAL FOR MANUFACTURING

Model Number & Options	Quantity
Company	Date
Contact	Title
Approval for Manufacturing/Signature	

AP

Revised: 04/27/18



ACCESS DOORS: AT Series

MODEL NUMBER AND OPTIONS SELECTION

BASE MODEL NUMBER

☐ AT Acoustical Tile Access Door

Suffix Options

- ☐ -AKL Allen Key Latch
☐ -GB Galvanized Drywall Bead
☐ -CL Cylinder Lock (one per door)
☐ -CLD Cylinder Lock with Dust Shutter (one per door)
☐ -SS Stainless Steel Construction (Type 304 No. 4 Satin Finish)

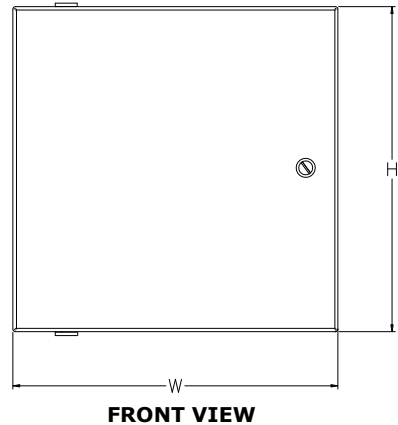
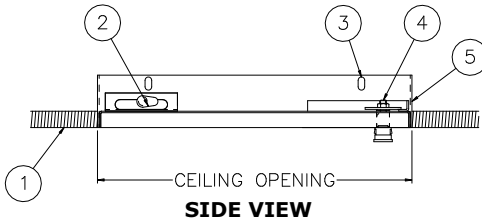
STANDARD AVAILABLE SIZES

Special sizes available upon request.

NOMINAL DOOR SIZE (W X H)	CEILING OPENING (minimum required)	LATCHES	WEIGHT
AT 8" x 8"	8-1/8" x 8-1/8"	1	4 lbs.
AT 12" x 12"	12-1/8" x 12-1/8"	1	5.5 lbs.
AT 12" x 24"	12-1/8" x 24-1/8"	2	9.5 lbs.
AT 16" x 16"	16-1/8" x 16-1/8"	2	8.5 lbs.
AT 18" x 18"	18-1/8" x 18-1/8"	2	10 lbs.
AT 24" x 24"	24-1/8" x 24-1/8"	4	16 lbs.
AT 24" x 36"	24-1/8" x 36-1/8"	5	24.5 lbs.

NOTES:

1. TILE, BY OTHERS
2. CONCEALED HINGE
3. MOUNTING HOLES
4. SCREWDRIVER OPERATED LATCH
5. FRAME



Dimensions are subject to manufacturer's tolerance of plus or minus 1/4". Elmdor/Stoneman assumes no responsibility for use of void or suspended data. Please visit www.elmdorstoneman.com for most current specifications. © Copyright 2009 Elmdor/Stoneman, City of Industry, CA, A Division of Acorn Engineering Company.

SELECTION SUMMARY & APPROVAL FOR MANUFACTURING

Model Number & Options	Quantity
Company	Date
Contact	Title
Approval for Manufacturing/Signature	

AT

Revised: 05/10/18



ACCESS DOORS: ATWT Series

MODEL NUMBER AND OPTIONS SELECTION

BASE MODEL NUMBER

☐ ATWT Airtight/Watertight Door

Suffix Options

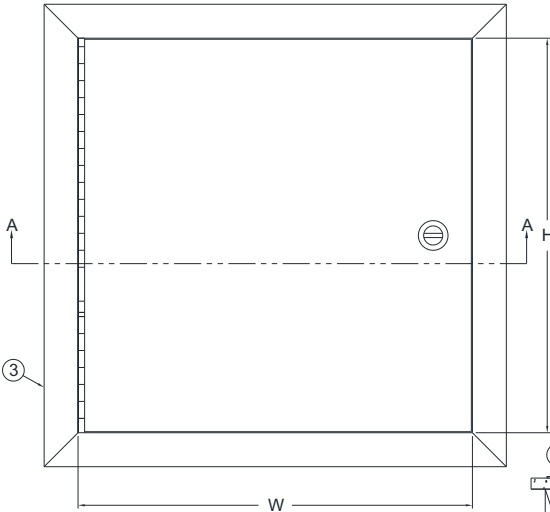
- ☐ -AKL Allen Key Latch
- ☐ -CL Cylinder Lock
- ☐ -FFI 1" (25mm) Foil Faced Insulation
- ☐ -MAS Masonry Anchor Straps Attached
- ☐ -MLP Mortise Lock Prep
- ☐ -NLH Non-Locking, Two-Position Handle

STANDARD AVAILABLE SIZES

Special sizes available upon request.

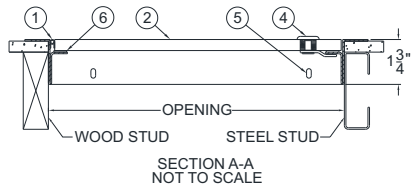
WALL OPENING (W x H) INCHES (mm)	LOCK QTY	WEIGHT lbs (kg)
8" x 8" (203 x 203)	1	4.25 (1.92)
10" x 10" (254 x 254)	1	5.25 (2.38)
12" x 12" (305 x 305)	1	6.75 (3.06)
14" x 14" (356 x 356)	1	8.25 (3.74)
16" x 16" (406 x 406)	1	10.00 (4.53)
18" x 18" (457 x 457)	1	12.00 (5.44)
20" x 20" (508 x 508)	1	14.00 (6.35)
24" x 24" (610 x 610)	2	18.50 (8.39)
24" x 36" (610 x 914)	2	26.00 (11.79)

WALL OPENING (W x H) INCHES (mm)	LOCK QTY	WEIGHT lbs (kg)
24" x 48" (610 x 1219)	3	35.00 (15.87)
30" x 30" (762 x 762)	4	26.75 (12.13)
30" x 36" (762 x 914)	4	31.00 (14.06)
30" x 48" (762 x 1219)	5	42.00 (19.05)
30" x 60" (762 x 1524)	5	50.00 (22.68)
36" x 36" (914 x 914)	4	36.00 (16.32)
36" x 48" (914 x 1219)	5	48.00 (21.77)
36" x 60" (914 x 1524)	5	58.00 (26.30)
36" x 78" (914 x 1981)	5	75.00 (34.02)



NOTES:

- CONTINUOUS PIANO HINGE
- DOOR
- FRAME
- SCREWDRIVER OPERATED CYLINDER LATCH
- 3/16" x 3/8" SLOTTED MOUNTING HOLES
- 1/8" x 1/2" GASKET



Dimensions are subject to manufacturer's tolerance of plus or minus 1/4". Elmdor/Stoneman assumes no responsibility for use of void or suspended data. Please visit www.elmdorstoneman.com for most current specifications. © Copyright 2009 Elmdor/Stoneman, City of Industry, CA, A Division of Acorn Engineering Company.

SELECTION SUMMARY & APPROVAL FOR MANUFACTURING

Model Number & Options _____	Quantity _____
Company _____	Date _____
Contact _____	Title _____
Approval for Manufacturing/Signature _____	

ATWT

03/02/16



ACCESS DOORS: CFR Series

MODEL NUMBER AND OPTIONS SELECTION

BASE MODEL NUMBER

☐ CFR Ceiling Fire Resistant Access Door

Suffix Options

- ☐ -AKL Allen Key Latch
- ☐ -CL Cylinder Lock (one per door)
- ☐ -CLD Cylinder Lock with Dust Shutter (one per door)
- ☐ -SS Stainless Steel Construction (Type 304 No. 4 Satin Finish)

STANDARD AVAILABLE SIZES

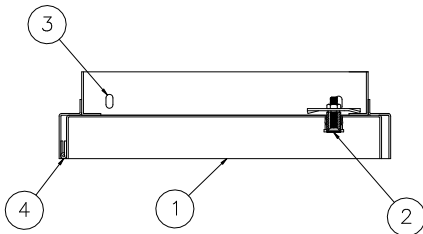
Special sizes available upon request.

NOMINAL DOOR SIZE (W X H)

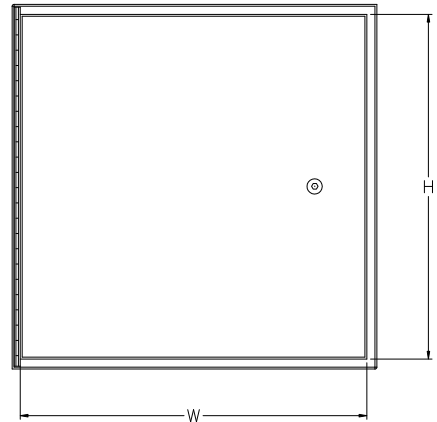
	CEILING OPENING	LATCHES	WEIGHT
CFR 12" x 12"	10-1/2" x 10-1/2"	1	7.3 lbs.
CFR 18" x 18"	16-1/2" x 16-1/2"	2	12.5 lbs.
CFR 24" x 24"	22-1/2" x 22-1/2"	2	21.8 lbs.
CFR 22" x 30"	20-1/2" x 28-1/2"	4	26.0 lbs.

NOTES:

1. DOOR
2. SCREWDRIVER OPERATED LATCH
3. MOUNTING HOLES
4. CONCEALED HINGE



SIDE VIEW



FRONT VIEW

Dimensions are subject to manufacturer's tolerance of plus or minus 1/4". Elmdor/Stoneman assumes no responsibility for use of void or suspended data. Please visit www.elmdorstoneman.com for most current specifications. © Copyright 2009 Elmdor/Stoneman, City of Industry, CA, A Division of Acorn Engineering Company.

SELECTION SUMMARY & APPROVAL FOR MANUFACTURING

Model Number & Options	Quantity
Company	Date
Contact	Title
Approval for Manufacturing/Signature	

CFR

Revised: 10/25/16



ACCESS DOORS: DT Series

MODEL NUMBER AND OPTIONS SELECTION

BASE MODEL NUMBER

☐ DT Duct Access Door

Suffix Options

☐ -CNH Cam Latch-Non Hinged

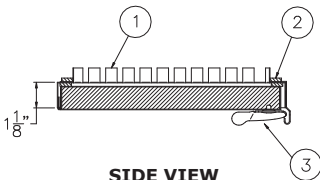
STANDARD AVAILABLE SIZES

Special sizes available upon request.

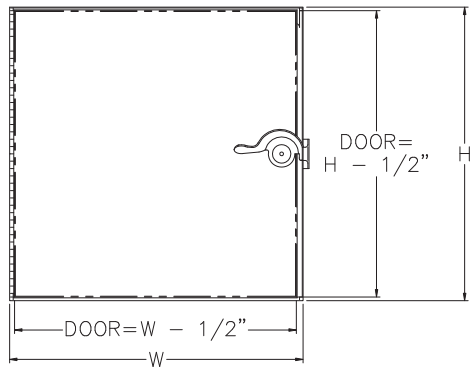
NOMINAL DOOR SIZE (W X H)	DUCT OPENING	CAM LATCHES	WEIGHT
DT 6" x 6"	4-3/4" x 4-3/4"	1	1.5 lbs.
DT 8" x 8"	6-3/4" x 6-3/4"	1	2.5 lbs.
DT 10" x 10"	8-3/4" x 8-3/4"	1	3 lbs.
DT 12" x 12"	10-3/4" x 10-3/4"	1	4 lbs.
DT 14" x 14"	12-3/4" x 12-3/4"	2	5 lbs.
DT 16" x 16"	14-3/4" x 14-3/4"	2	7 lbs.
DT 18" x 18"	16-3/4" x 16-3/4"	2	8 lbs.
DT 20" x 20"	18-3/4" x 18-3/4"	2	11 lbs.
DT 24" x 24"	22-3/4" x 22-3/4"	2	13 lbs.

NOTES:

1. TABS
2. CONCEALED HINGE
3. CAM LATCH



SIDE VIEW



FRONT VIEW

Dimensions are subject to manufacturer's tolerance of plus or minus 1/4". Elmdor/Stoneman assumes no responsibility for use of void or suspended data. Please visit www.elmdorstoneman.com for most current specifications. © Copyright 2009 Elmdor/Stoneman, City of Industry, CA. A Division of Acorn Engineering Company.

SELECTION SUMMARY & APPROVAL FOR MANUFACTURING

Model Number & Options	Quantity
Company	Date
Contact	Title
Approval for Manufacturing/Signature	

DT

Revised: 3/24/09



ACCESS DOORS: DW Series 14 Gage

MODEL NUMBER AND OPTIONS SELECTION

BASE MODEL NUMBER

☐ DW Dry Wall Access Door (14 Gage Steel)

Suffix Options

- ☐ - AKL Allen Key Latch
- ☐ - CL Cylinder Lock (one per door)
- ☐ - CLD Cylinder Lock with Dust Shutter (one per door)
- ☐ - MAS Masonry Anchor Straps
- ☐ - SS Stainless Steel Construction (Type 304 No. 4 Satin Finish)
- ☐ - TH 'T' Handle

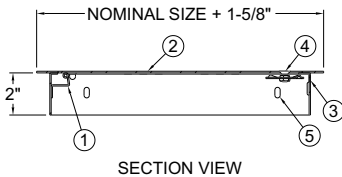
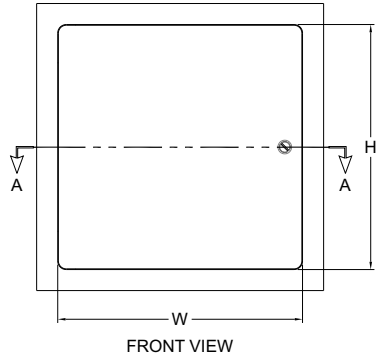
STANDARD AVAILABLE SIZES

Special sizes available upon request.

NOMINAL

DOOR SIZE

(W X H)	WALL OPENING	LATCHES	WEIGHT
DW 6" x 6"	6-1/2" x 6-1/2"	1	3 lbs.
DW 8" x 8"	8-1/2" x 8-1/2"	1	3 lbs.
DW 8" x 12"	8-1/2" x 12-1/2"	1	4 lbs.
DW 10" x 10"	10-1/2" x 10-1/2"	1	4 lbs.
DW 12" x 12"	12-1/2" x 12-1/2"	1	5.5 lbs.
DW 12" x 16"	12-1/2" x 16-1/2"	1	6 lbs.
DW 12" x 18"	12-1/2" x 18-1/2"	2	6.5 lbs.
DW 12" x 24"	12-1/2" x 24-1/2"	3	9.5 lbs.
DW 14" x 14"	14-1/2" x 14-1/2"	1	6 lbs.
DW 14" x 20"	14-1/2" x 20-1/2"	3	8 lbs.
DW 14" x 24"	14-1/2" x 24-1/2"	3	15 lbs.
DW 15" x 15"	15-1/2" x 15-1/2"	1	6.5 lbs.
DW 16" x 16"	16-1/2" x 16-1/2"	1	7.5 lbs.
DW 16" x 20"	16-1/2" x 20-1/2"	3	8.5 lbs.
DW 16" x 24"	16-1/2" x 24-1/2"	3	10 lbs.
DW 18" x 18"	18-1/2" x 18-1/2"	3	9 lbs.
DW 18" x 24"	18-1/2" x 24-1/2"	5	12 lbs.
DW 18" x 36"	18-1/2" x 36-1/2"	6	16 lbs.
DW 20" x 20"	20-1/2" x 20-1/2"	3	11 lbs.
DW 20" x 24"	20-1/2" x 24-1/2"	5	13 lbs.
DW 20" x 30"	20-1/2" x 30-1/2"	5	15 lbs.
DW 22" x 22"	22-1/2" x 22-1/2"	3	12 lbs.
DW 22" x 30"	22-1/2" x 30-1/2"	5	16 lbs.
DW 22" x 36"	22-1/2" x 36-1/2"	6	22 lbs.
DW 24" x 24"	24-1/2" x 24-1/2"	3	15 lbs.
DW 24" x 30"	24-1/2" x 30-1/2"	5	17 lbs.
DW 24" x 36"	24-1/2" x 36-1/2"	6	20.5 lbs.
DW 24" x 48"	24-1/2" x 48-1/2"	7	28 lbs.
DW 30" x 30"	30-1/2" x 30-1/2"	7	21.5 lbs.
DW 30" x 36"	30-1/2" x 36-1/2"	8	29 lbs.
DW 32" x 32"	32-1/2" x 32-1/2"	7	23 lbs.
DW 36" x 36"	36-1/2" x 36-1/2"	8	31.5 lbs.
DW 36" x 48"	36-1/2" x 48-1/2"	9	42 lbs.
DW 48" x 48"	48-1/2" x 48-1/2"	11	58 lbs.



Notes:

1. Concealed Continuous Piano Hinge
2. Door
3. 2" U-Frame
4. Screwdriver operated latch
5. Mounting holes

Dimensions are subject to manufacturer's tolerance of plus or minus 1/4". Elmdor/Stoneman assumes no responsibility for use of void or suspended data. Please visit www.elmdorstoneman.com for most current specifications. © Copyright 2009 Elmdor/Stoneman, City of Industry, CA, A Division of Acorn Engineering Company.

SELECTION SUMMARY & APPROVAL FOR MANUFACTURING

Model Number & Options	Quantity
Company	Date
Contact	Title
Approval for Manufacturing/Signature	

DW14

Revised: 04/27/18



ACCESS DOORS: DW Series

MODEL NUMBER AND OPTIONS SELECTION

BASE MODEL NUMBER

- ☐ DW Dry Wall Access Door
(16 Gage Steel)

Suffix Options

- ☐ - AKL Allen Key Latch
☐ - CL Cylinder Lock (one per door)
☐ - CLD Cylinder Lock with Dust Shutter
(one per door)
☐ - MAS Masonry Anchor Straps
☐ - MLP Mortise Cylinder Lock (Prep)
☐ - SS Stainless Steel Construction
(Type 304 No. 4 Satin Finish)
☐ - TH 'T' Handle

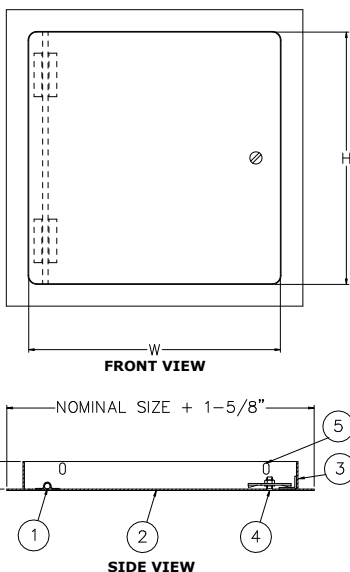
STANDARD AVAILABLE SIZES

Special sizes available upon request.

NOMINAL

DOOR SIZE

(W X H)	WALL OPENING	LATCHES	WEIGHT
DW 6" x 6"	6-1/2" x 6-1/2"	1	3 lbs.
DW 8" x 8"	8-1/2" x 8-1/2"	1	3 lbs.
DW 8" x 12"	8-1/2" x 12-1/2"	1	4 lbs.
DW 10" x 10"	10-1/2" x 10-1/2"	1	4 lbs.
DW 12" x 12"	12-1/2" x 12-1/2"	1	5.5 lbs.
DW 12" x 16"	12-1/2" x 16-1/2"	1	6 lbs.
DW 12" x 18"	12-1/2" x 18-1/2"	2	6.5 lbs.
DW 12" x 24"	12-1/2" x 24-1/2"	3	9.5 lbs.
DW 14" x 14"	14-1/2" x 14-1/2"	1	6 lbs.
DW 14" x 20"	14-1/2" x 20-1/2"	3	8 lbs.
DW 14" x 24"	14-1/2" x 24-1/2"	3	15 lbs.
DW 15" x 15"	15-1/2" x 15-1/2"	1	6.5 lbs.
DW 16" x 16"	16-1/2" x 16-1/2"	1	7.5 lbs.
DW 16" x 20"	16-1/2" x 20-1/2"	3	8.5 lbs.
DW 16" x 24"	16-1/2" x 24-1/2"	3	10 lbs.
DW 18" x 18"	18-1/2" x 18-1/2"	3	9 lbs.
DW 18" x 24"	18-1/2" x 24-1/2"	5	12 lbs.
DW 18" x 36"	18-1/2" x 36-1/2"	6	16 lbs.
DW 20" x 20"	20-1/2" x 20-1/2"	3	11 lbs.
DW 20" x 24"	20-1/2" x 24-1/2"	5	13 lbs.
DW 20" x 30"	20-1/2" x 30-1/2"	5	15 lbs.
DW 22" x 22"	22-1/2" x 22-1/2"	3	12 lbs.
DW 22" x 30"	22-1/2" x 30-1/2"	5	16 lbs.
DW 22" x 36"	22-1/2" x 36-1/2"	6	22 lbs.
DW 24" x 24"	24-1/2" x 24-1/2"	3	15 lbs.
DW 24" x 30"	24-1/2" x 30-1/2"	5	17 lbs.
DW 24" x 36"	24-1/2" x 36-1/2"	6	20.5 lbs.
DW 24" x 48"	24-1/2" x 48-1/2"	7	28 lbs.
DW 30" x 30"	30-1/2" x 30-1/2"	7	21.5 lbs.
DW 30" x 36"	30-1/2" x 36-1/2"	8	29 lbs.
DW 32" x 32"	32-1/2" x 32-1/2"	7	23 lbs.
DW 36" x 36"	36-1/2" x 36-1/2"	8	31.5 lbs.
DW 36" x 48"	36-1/2" x 48-1/2"	9	42 lbs.
DW 48" x 48"	48-1/2" x 48-1/2"	11	58 lbs.



NOTES:

1. CONCEALED PIVOTING ROD HINGE
2. DOOR
3. FRAME
4. SCREWDRIVER OPERATED LATCH
5. MOUNTING HOLES

Dimensions are subject to manufacturer's tolerance of plus or minus 1/4". Elmdor/Stoneman assumes no responsibility for use of void or suspended data. Please visit www.elmdorstoneman.com for most current specifications. © Copyright 2009 Elmdor/Stoneman, City of Industry, CA, A Division of Acorn Engineering Company.

SELECTION SUMMARY & APPROVAL FOR MANUFACTURING

Model Number & Options	Quantity
Company	Date
Contact	Title
Approval for Manufacturing/Signature	

DW

Revised: 04/27/18



ACCESS DOORS: DWB Series

MODEL NUMBER AND OPTIONS SELECTION

BASE MODEL NUMBER

☐ DWB Dry Wall Bead Access Door

Suffix Options

- ☐ -AKL Allen Key Latch
☐ -CL Cylinder Lock (one per door)
☐ -CLD Cylinder Lock with Dust Shutter (one per door)
☐ -SS Stainless Steel Construction (Type 304 No. 4 Satin Finish)

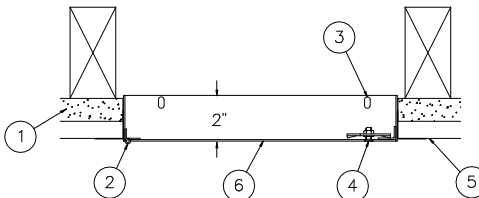
STANDARD AVAILABLE SIZES

Special sizes available upon request.

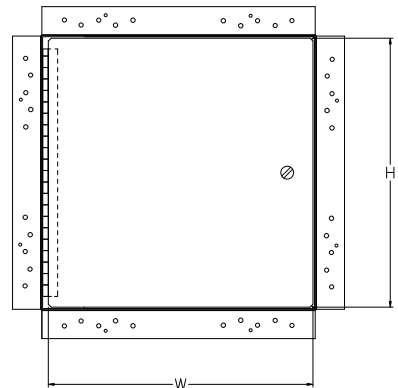
NOMINAL DOOR SIZE (W X H)	WALL OPENING (minimum required)	LATCHES	WEIGHT
DWB 8" x 8"	8-1/4" x 8-1/4"	1	3.5 lbs.
DWB 10" x 10"	10-1/4" x 10-1/4"	1	4.5 lbs.
DWB 12" x 12"	12-1/4" x 12-1/4"	1	6 lbs.
DWB 14" x 14"	14-1/4" x 14-1/4"	1	7 lbs.
DWB 16" x 16"	16-1/4" x 16-1/4"	1	8 lbs.
DWB 18" x 18"	18-1/4" x 18-1/4"	3	11 lbs.
DWB 22" x 22"	22-1/4" x 22-1/4"	3	15 lbs.
DWB 24" x 24"	24-1/4" x 24-1/4"	3	16 lbs.
DWB 24" x 36"	24-1/4" x 36-1/4"	6	25 lbs.
DWB 30" x 30"	30-1/4" x 30-1/4"	7	24 lbs.
DWB 36" x 36"	36-1/4" x 36-1/4"	8	33 lbs.

NOTES:

1. DRYWALL
2. CONCEALED PIANO HINGE
3. MOUNTING HOLES
4. SCREWDRIVER OPERATED LATCH
5. DRYWALL JOINT COMPOUND
6. DOOR



SIDE VIEW



FRONT VIEW

WARNING: Cancer and Reproductive Harm - www.P65Warnings.ca.gov

Dimensions are subject to manufacturer's tolerance of plus or minus 1/4". Elmdor/Stoneman assumes no responsibility for use of void or suspended data. Please visit www.elmdorstoneman.com for most current specifications. © Copyright 2009 Elmdor/Stoneman, City of Industry, CA, A Division of Acorn Engineering Company.

SELECTION SUMMARY & APPROVAL FOR MANUFACTURING

Model Number & Options	Quantity
Company	Date
Contact	Title
Approval for Manufacturing/Signature	

DWB

Revised: 05/07/18



ACCESS DOORS: ED Series

MODEL NUMBER AND OPTIONS SELECTION

BASE MODEL NUMBER

☐ ED Exterior Door for Walls and Ceilings

Suffix Options

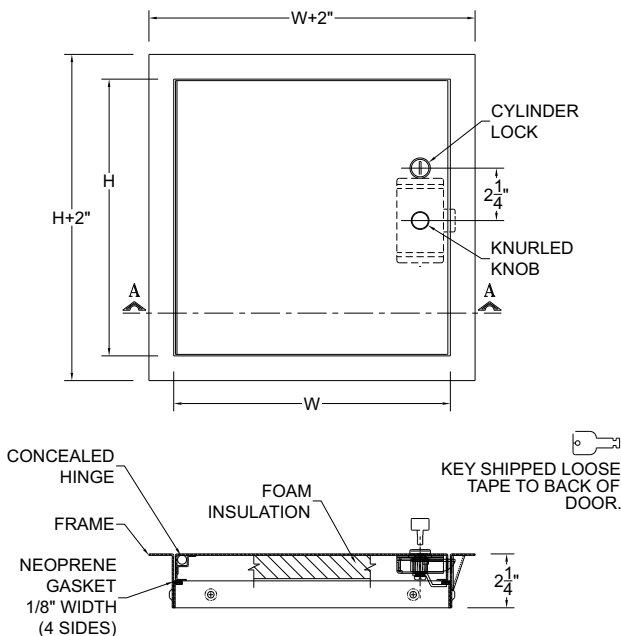
- ☐ - GB Galvanized Drywall Bead
☐ - SS Stainless Steel Construction
 (Type 304 No. 4 Satin Finish)

STANDARD AVAILABLE SIZES

Special sizes available upon request.

NOMINAL DOOR SIZE (W x H)	WALL OPENING	LOCK QTY	WEIGHT
ED 8" x 8"	8-3/8" x 8-3/8"	1	5 lbs.
ED 12" x 12"	12-3/8" x 12-3/8"	1	15 lbs.
ED 14" x 14"	14-3/8" x 14-3/8"	1	17 lbs.
ED 18" x 18"	18-3/8" x 18-3/8"	1	20 lbs.
ED 22" x 30"	22-3/8" x 30-3/8"	2	32 lbs.

NOMINAL DOOR SIZE (W x H)	WALL OPENING	LOCK QTY	WEIGHT
ED 24" x 24"	24-3/8" x 24-3/8"	1	28 lbs.
ED 24" x 36"	24-3/8" x 36-3/8"	2	40 lbs.
ED 30" x 30"	30-3/8" x 30-3/8"	2	38 lbs.
ED 36" x 36"	36-3/8" x 36-3/8"	2	50 lbs.
ED 36" x 48"	36-3/8" x 48-3/8"	2	81 lbs.



Dimensions are subject to manufacturer's tolerance of plus or minus 1/4". Elmdor/Stoneman assumes no responsibility for use of void or suspended data. Please visit www.elmdorstoneman.com for most current specifications. © Copyright 2009 Elmdor/Stoneman, City of Industry, CA, A Division of Acorn Engineering Company.

SELECTION SUMMARY & APPROVAL FOR MANUFACTURING

Model Number & Options	Quantity
Company	Date
Contact	Title
Approval for Manufacturing/Signature	

ED

Revised: 04/27/18



ACCESS DOORS: EDI Series

MODEL NUMBER AND OPTIONS SELECTION

BASE MODEL NUMBER

- ☐ EDI Exterior Door for Walls and Ceilings
With Internal Release Latch

Suffix Options

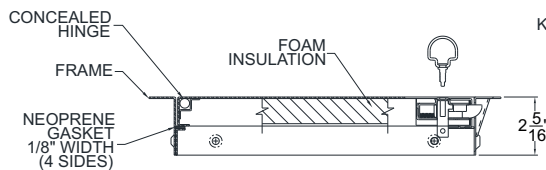
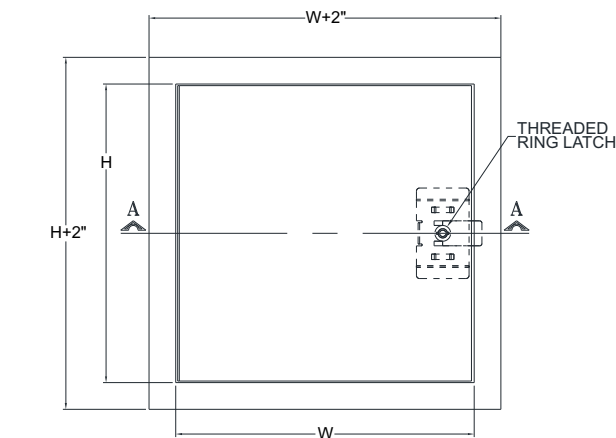
- ☐ - GB Galvanized Drywall Bead
☐ - SS Stainless Steel Construction.
(Type 304 No 4 Finish Satin Finish)

STANDARD AVAILABLE SIZES

Special sizes available upon request.

NOMINAL DOOR SIZE (W x H)	WALL OPENING	LOCK QTY	WEIGHT
EDI 8" x 8"	8-3/8" x 8-3/8"	1	5 lbs.
EDI 12" x 12"	12-3/8" x 12-3/8"	1	15 lbs.
EDI 14" x 14"	14-3/8" x 14-3/8"	1	17 lbs.
EDI 18" x 18"	18-3/8" x 18-3/8"	1	20 lbs.
EDI 22" x 30"	22-3/8" x 30-3/8"	2	32 lbs.

NOMINAL DOOR SIZE (W x H)	WALL OPENING	LOCK QTY	WEIGHT
EDI 24" x 24"	24-3/8" x 24-3/8"	1	28 lbs.
EDI 24" x 36"	24-3/8" x 36-3/8"	2	40 lbs.
EDI 30" x 30"	30-3/8" x 30-3/8"	2	38 lbs.
EDI 36" x 36"	36-3/8" x 36-3/8"	2	50 lbs.
EDI 36" x 48"	36-3/8" x 48-3/8"	2	81 lbs.



KEY SHIPPED LOOSE
TAPE TO BACK OF
DOOR.

Dimensions are subject to manufacturer's tolerance of plus or minus 1/4". Elmdor/Stoneman assumes no responsibility for use of void or suspended data. Please visit www.elmdorstoneman.com for most current specifications. © Copyright 2009 Elmdor/Stoneman, City of Industry, CA, A Division of Acorn Engineering Company.

Model Number & Options		Quantity
Company		Date
Contact	Title	
Approval for Manufacturing/Signature		

EDI

Revised: 04/27/18



ACCESS DOORS: FR Series

MODEL NUMBER AND OPTIONS SELECTION

BASE MODEL NUMBER

☐ FR Fire Rated Access Door

Suffix Options

- ☐ -CL Cylinder Lock (one per door)
- ☐ -CLD Cylinder Lock with Dust Shutter (one per door)
- ☐ -SS Stainless Steel Construction (Type 304 No. 4 Satin Finish)

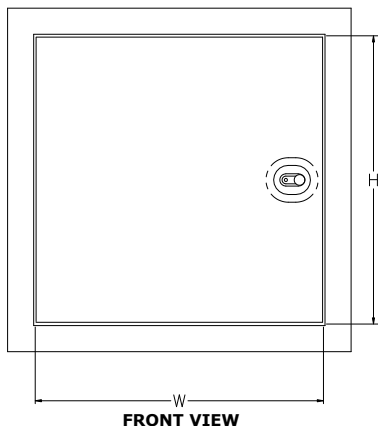
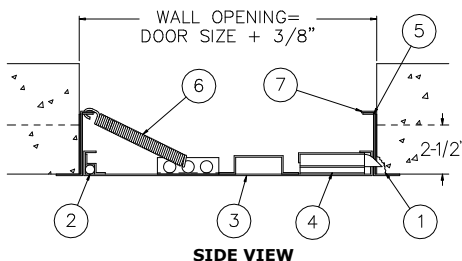
STANDARD AVAILABLE SIZES

Special sizes available upon request.

NOMINAL DOOR SIZE (W X H)	WALL OPENING (minimum required)	LATCHES	WEIGHT
FR 8" x 8"	8-3/8" x 8-3/8"	1	6 lbs.
FR 10" x 10"	10-3/8" x 10-3/8"	1	7.5 lbs.
FR 12" x 12"	12-3/8" x 12-3/8"	1	9 lbs.
FR 12" x 18"	12-3/8" x 18-3/8"	1	10.5 lbs.
FR 12" x 24"	12-3/8" x 24-3/8"	1	13 lbs.
FR 14" x 14"	14-3/8" x 14-3/8"	1	10 lbs.
FR 16" x 16"	16-3/8" x 16-3/8"	1	12.5 lbs.
FR 18" x 18"	18-3/8" x 18-3/8"	1	15 lbs.
FR 20" x 20"	20-3/8" x 20-3/8"	1	18 lbs.
FR 22" x 22"	22-3/8" x 22-3/8"	1	22 lbs.
FR 22" x 30"	22-3/8" x 30-3/8"	2	28 lbs.
FR 24" x 24"	24-3/8" x 24-3/8"	2	24.5 lbs.
FR 24" x 36"	24-3/8" x 36-3/8"	2	33 lbs.
FR 24" x 48"	24-3/8" x 48-3/8"	2	42 lbs.
FR 30" x 30"	30-3/8" x 30-3/8"	2	33.5 lbs.
FR 32" x 32"	32-3/8" x 32-3/8"	2	35 lbs.
FR 36" x 36"	36-3/8" x 36-3/8"	2	43 lbs.
FR 36" x 48"	36-3/8" x 48-3/8"	2	74 lbs.

NOTES:

1. CHIP OUT MASONRY TO CLEAR BOLT COVER
2. CONCEALED HINGE
3. DOOR
4. RECESSED LATCH
5. INTERIOR LATCH RELEASE SLIDE
6. CLOSING SPRING
7. FRAME



Dimensions are subject to manufacturer's tolerance of plus or minus 1/4". Elmdor/Stoneman assumes no responsibility for use of void or suspended data. Please visit www.elmdorstoneman.com for most current specifications. © Copyright 2009 Elmdor/Stoneman, City of Industry, CA, A Division of Acorn Engineering Company.

SELECTION SUMMARY & APPROVAL FOR MANUFACTURING

Model Number & Options	Quantity
Company	Date
Contact	Title
Approval for Manufacturing/Signature	

FR

Revised: 10/25/16



ACCESS DOORS: FRC Series

MODEL NUMBER AND OPTIONS SELECTION

BASE MODEL NUMBER

☐ FRC Fire Rated Ceiling Access Door

Suffix Options

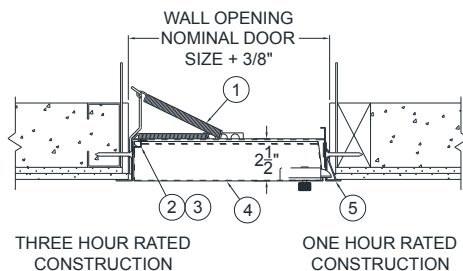
- ☐ -GB Galvanized Drywall Bead
- ☐ -MLP Mortise Cylinder Lock (Prep)
- ☐ -SS Stainless Steel Construction (Type 304 No. 4 Satin Finish)

STANDARD AVAILABLE SIZES

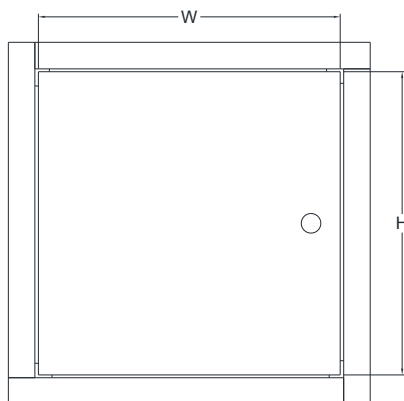
Special sizes available upon request.

NOMINAL DOOR SIZE (W X H)	CEILING OPENING	WALL OPENING	LATCHES	WEIGHT
FRC 8" x 8"	9-5/8" x 9-5/8"	8-3/8" x 8-3/8"	1	11 lbs.
FRC 10" x 10"	11-5/8" x 11-5/8"	10-3/8" x 10-3/8"	1	12 lbs.
FRC 12" x 12"	13-5/8" x 13-5/8"	12-3/8" x 12-3/8"	1	15 lbs.
FRC 14" x 14"	15-5/8" x 15-5/8"	14-3/8" x 14-3/8"	1	17 lbs.
FRC 16" x 16"	17-5/8" x 17-5/8"	16-3/8" x 16-3/8"	1	18 lbs.
FRC 18" x 18"	19-5/8" x 19-5/8"	18-3/8" x 18-3/8"	1	20 lbs.
FRC 18" x 24"	19-5/8" x 25-5/8"	18-3/8" x 24-3/8"	1	26 lbs.
FRC 20" x 20"	21-5/8" x 21-5/8"	20-3/8" x 20-3/8"	1	24 lbs.
FRC 22" x 30"	23-5/8" x 31-5/8"	22-3/8" x 30-3/8"	2	32 lbs.
FRC 22" x 36"	23-5/8" x 37-5/8"	22-3/8" x 36-3/8"	2	40 lbs.
FRC 24" x 24"	25-5/8" x 25-5/8"	24-3/8" x 24-3/8"	1	28 lbs.
FRC 24" x 36"	25-5/8" x 37-5/8"	24-3/8" x 36-3/8"	2	40 lbs.

Note: On sizes 16" x 16" and larger, an extra spring is supplied with the door and must be attached from back of door pan to framing, or floor above, in such a manner to ensure that door is self closing.



SIDE VIEW



FRONT VIEW

1. LATCH SPRING
2. HINGE BRACKET
3. HINGE PIN
4. DOOR
5. FRAME

Dimensions are subject to manufacturer's tolerance of plus or minus 1/4". Elmdor/Stoneman assumes no responsibility for use of void or suspended data. Please visit www.elmdorstoneman.com for most current specifications. © Copyright 2009 Elmdor/Stoneman, City of Industry, CA, A Division of Acorn Engineering Company.

SELECTION SUMMARY & APPROVAL FOR MANUFACTURING

Model Number & Options	Quantity
Company	Date
Contact	Title
Approval for Manufacturing/Signature	

FRC

Revised: 07/18/16



ACCESS DOORS: GD Series

MODEL NUMBER AND OPTIONS SELECTION

BASE MODEL NUMBER

- ☐ GD Gasketed Access Door
(18 Gage Steel)

Suffix Options

- ☐ - AKL Allen Key Latch
☐ - CL Cylinder Lock (one per door)
☐ - CLD Cylinder Lock with Dust Shutter
(one per door)
☐ - SS Stainless Steel Construction
(Type 304 No. 4 Satin Finish)

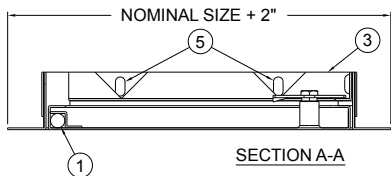
STANDARD AVAILABLE SIZES

Special sizes available upon request.

NOMINAL DOOR

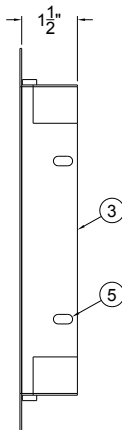
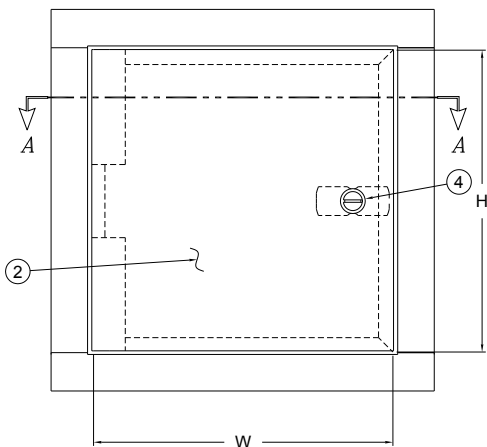
SIZE (W X H)

INCHES	WALL OPENING	LATCHES	LBS.
GD 8" x 8"	8-1/2" x 8-1/2"	1	3.5
GD 12" x 12"	12-1/2" x 12-1/2"	1	6
GD 16" x 16"	16-1/2" x 16-1/2"	2	9
GD 18" x 18"	18-1/2" x 18-1/2"	2	10.5
GD 24" x 24"	24-1/2" x 24-1/2"	2	16
GD 24" x 36"	24-1/2" x 36-1/2"	2	22



NOTES:

1. CONCEALED PIVOTING ROD HINGE
2. DOOR
3. FRAME
4. SCREWDRIVER OPERATED LATCH
5. MOUNTING HOLES



Dimensions are subject to manufacturer's tolerance of plus or minus 1/4". Elmdor/Stoneman assumes no responsibility for use of void or suspended data. Please visit www.elmdorstoneman.com for most current specifications. © Copyright 2009 Elmdor/Stoneman, City of Industry, CA. A Division of Acorn Engineering Company.

SELECTION SUMMARY & APPROVAL FOR MANUFACTURING

Model Number & Options	Quantity
Company	Date
Contact	Title
Approval for Manufacturing/Signature	

GD

Rev: 10/25/16



MODEL NUMBER AND OPTIONS SELECTION

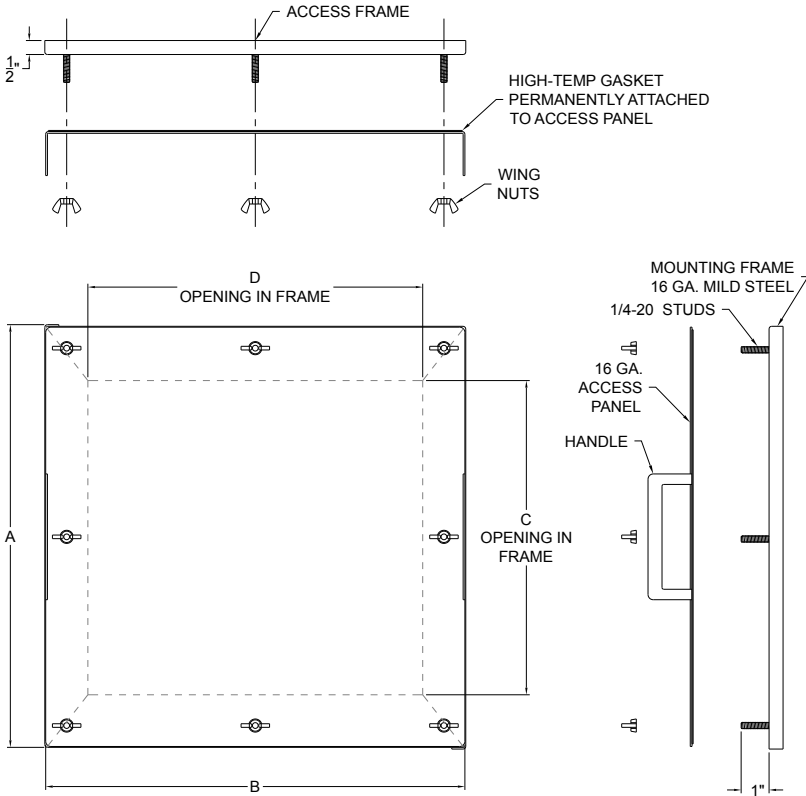
BASE MODEL NUMBER

☐ GDT Grease Duct Door

STANDARD AVAILABLE SIZES

Special sizes available upon request.

NOMINAL SIZE	OVERALL SIZE		FRAME OPENING		WING NUTS
in. (mm)	A in. (mm)	B in. (mm)	C in. (mm)	D in. (mm)	QTY #
7" (178) x 7" (178)	10" (254)	10" (254)	7" (178)	7" (178)	4
7" (178) x 12" (305)	10" (254)	15" (381)	7" (178)	12" (305)	6
7" (178) x 20" (508)	10" (254)	23" (584)	7" (178)	20" (508)	10
12" (305) x 12" (305)	15" (381)	15" (381)	12" (305)	12" (305)	8
12" (305) x 20" (508)	15" (381)	23" (584)	12" (305)	20" (508)	12
16" (406) x 20" (508)	19" (483)	23" (584)	16" (406)	20" (508)	12
20" (508) x 20" (508)	23" (584)	23" (584)	20" (508)	20" (508)	16



Dimensions are subject to manufacturer's tolerance of plus or minus 1/4". Elmdor/Stoneman assumes no responsibility for use of void or suspended data. Please visit www.elmdorstoneman.com for most current specifications. © Copyright 2009 Elmdor/Stoneman, City of Industry, CA, A Division of Acorn Engineering Company.

SELECTION SUMMARY & APPROVAL FOR MANUFACTURING

Model Number & Options	Quantity
Company	Date
Contact	Title
Approval for Manufacturing/Signature	



ACCESS DOORS: GFG Series

MODEL NUMBER AND OPTIONS SELECTION

BASE MODEL NUMBER

☐ GFG Gypsum Fiber Glass

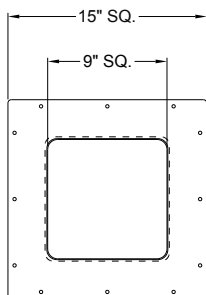
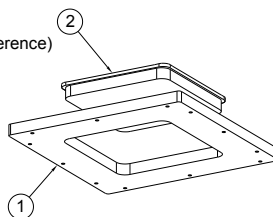
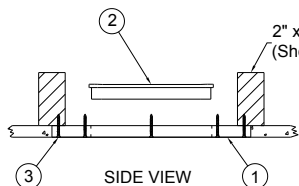
Suffix Options

"No Available Options"

STANDARD AVAILABLE SIZES

Standard sizes available upon request.

NOMINAL DOOR SIZE (W X H)	ROUGH OPENING	WEIGHT
9" x 9"	15" x 15"	6 lbs.
12" x 12"	18" x 18"	9 lbs.
16" x 16"	22" x 22"	10 lbs.
18" x 18"	24" x 24"	11 lbs.
22" x 30"	28" x 36"	16 lbs.
24" x 24"	30" x 30"	16 lbs.
30" x 30"	36" x 36"	20 lbs.



FRONT VIEW

NOTES:
 1. Panel Frame
 2. Door
 3. Mounting Hardware
 (By Others)

Dimensions are subject to manufacturer's tolerance of plus or minus 1/4". Elmdor/Stoneman assumes no responsibility for use of void or suspended data. Please visit www.elmdorstoneman.com for most current specifications. © Copyright 2009 Elmdor/Stoneman, City of Industry, CA, A Division of Acorn Engineering Company.

SELECTION SUMMARY & APPROVAL FOR MANUFACTURING

Model Number & Options	Quantity
Company	Date
Contact	Title
Approval for Manufacturing/Signature	

GFG

Revised: 7/26/13



ACCESS DOORS: HF Series

MODEL NUMBER AND OPTIONS SELECTION

BASE MODEL NUMBER

☐ HF Hidden Flange Access Door

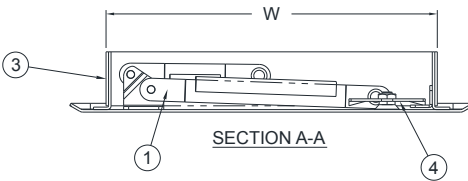
Suffix Options

- ☐ - AKL Allen Key Latch
- ☐ - CL Cylinder Lock (one per door)
- ☐ - CLD Cylinder Lock with Dust Shutter (one per door)

STANDARD AVAILABLE SIZES

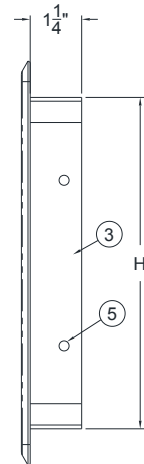
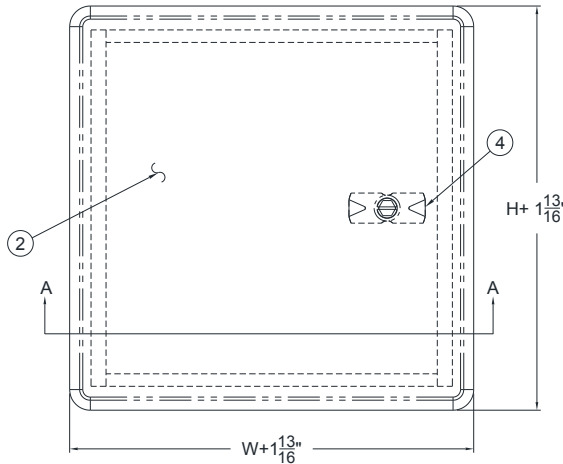
Special sizes available upon request.

FRAME SIZE (W x H) INCHES (mm)	WALL OPENING INCHES (mm)	LATCHES	WEIGHT lbs (kg)
HF 8-1/4" x 8-1/4" (210 x 210)	8-1/2" x 8-1/2" (216 x 216)	1	3 (1.36)
HF 12" x 12" (305 x 305)	12-1/4" x 12-1/4" (312 x 312)	1	6 (2.72)
HF 16" x 16" (406 x 406)	16-1/4" x 16-1/4" (413 x 413)	1	9 (4.08)
HF 18" x 18" (457 x 457)	18-1/4" x 18-1/4" (464 x 464)	3	10 (4.54)
HF 24" x 24" (610 x 610)	24-1/4" x 24-1/4" (616 x 616)	4	17 (7.71)



NOTES:

- PANTOGRAPH HINGE
- DOOR
- FRAME
- SCREWDRIVER OPERATED LATCH
- MOUNTING HOLES



Dimensions are subject to manufacturer's tolerance of plus or minus 1/4". Elmdor/Stoneman assumes no responsibility for use of void or suspended data. Please visit www.elmdorstoneman.com for most current specifications. © Copyright 2009 Elmdor/Stoneman, City of Industry, CA, A Division of Acorn Engineering Company.

SELECTION SUMMARY & APPROVAL FOR MANUFACTURING

Model Number & Options	Quantity
Company	Date
Contact	Title
Approval for Manufacturing/Signature	

HF

Revised: 10/25/16



ACCESS DOORS: ML Series

MODEL NUMBER AND OPTIONS SELECTION

BASE MODEL NUMBER

☐ ML Metal Lath Access Door

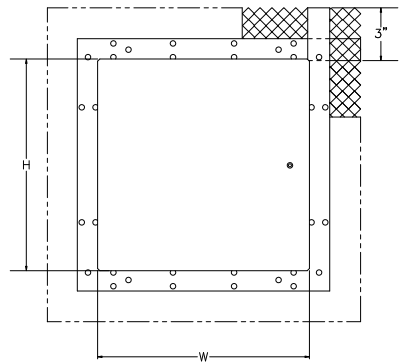
Suffix Options

- ☐ -AKL Allen Key Latch
☐ -CL Cylinder Lock (one per door)
☐ -CLD Cylinder Lock with Dust Shutter (one per door)
☐ -SS Stainless Steel Construction (Type 304 No. 4 Satin Finish)

STANDARD AVAILABLE SIZES

Special sizes available upon request.

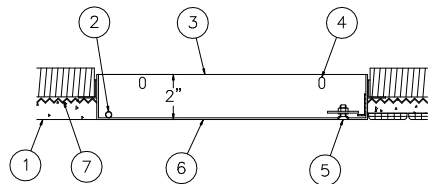
NOMINAL DOOR SIZE (W X H)	WALL OPENING (minimum required)	LATCHES	WEIGHT
ML 8" x 8"	8-1/4" x 8-1/4"	1	4 lbs.
ML 8" x 12"	8-1/4" x 12-1/4"	1	5.5 lbs.
ML 10" x 10"	10-1/4" x 10-1/4"	1	5.5 lbs.
ML 12" x 12"	12-1/4" x 12-1/4"	1	6.5 lbs.
ML 12" x 16"	12-1/4" x 16-1/4"	1	9 lbs.
ML 12" x 18"	12-1/4" x 18-1/4"	1	10 lbs.
ML 12" x 24"	12-1/4" x 24-1/4"	2	11.5 lbs.
ML 14" x 14"	14-1/4" x 14-1/4"	2	8 lbs.
ML 16" x 16"	16-1/4" x 16-1/4"	2	11 lbs.
ML 16" x 20"	16-1/4" x 20-1/4"	3	12.5 lbs.
ML 18" x 18"	18-1/4" x 18-1/4"	3	13 lbs.
ML 18" x 24"	18-1/4" x 24-1/4"	5	20 lbs.
ML 20" x 24"	20-1/4" x 24-1/4"	5	22 lbs.
ML 20" x 30"	20-1/4" x 30-1/4"	5	23.5 lbs.
ML 24" x 24"	24-1/4" x 24-1/4"	3	21 lbs.
ML 24" x 30"	24-1/4" x 30-1/4"	5	24.5 lbs.
ML 24" x 36"	24-1/4" x 36-1/4"	6	29.5 lbs.
ML 30" x 30"	30-1/4" x 30-1/4"	7	25.5 lbs.
ML 36" x 36"	36-1/4" x 36-1/4"	8	28 lbs.



FRONT VIEW

NOTES:

1. FINISH LINE, PLASTER OVER MASONRY
2. CONCEALED PIANO HINGE
3. FRAME
4. MOUNTING HOLES
5. SCREWDRIVER OPERATED LATCH
6. DOOR
7. METAL LATH



SIDE VIEW

WARNING: Cancer and Reproductive Harm - www.P65Warnings.ca.gov

Dimensions are subject to manufacturer's tolerance of plus or minus 1/4". Elmdor/Stoneman assumes no responsibility for use of void or suspended data. Please visit www.elmdorstoneman.com for most current specifications. © Copyright 2009 Elmdor/Stoneman, City of Industry, CA, A Division of Acorn Engineering Company.

SELECTION SUMMARY & APPROVAL FOR MANUFACTURING

Model Number & Options	Quantity
Company	Date
Contact	Title
Approval for Manufacturing/Signature	

ML

Revised: 05/07/18

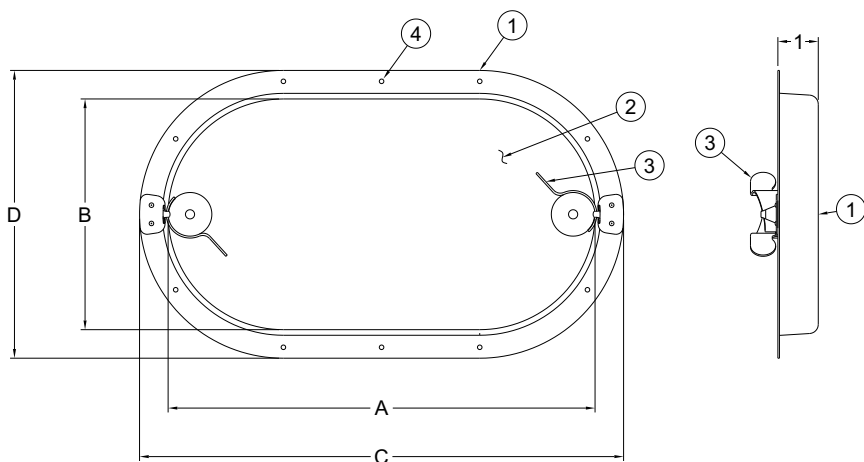


ACCESS DOORS: ODD Series

STANDARD AVAILABLE SIZES

Special sizes available upon request.

NOMINAL DOOR SIZE	DIM "A"	DIM "B"	DIM "C"	DIM "D"	WEIGHT
ODD 8" x 5" (200mm x 125mm)	7-7/8"	5"	9-1/2"	6-1/2"	1 lbs
ODD 12" x 6" (300mm x 150mm)	11-7/8"	6"	13-1/4"	7-7/8"	1.26 lbs
ODD 18" x 10" (460mm x 260mm)	18-1/4"	10-1/4"	19-5/8"	11-7/8"	3.15 lbs
ODD 22" x 14" (550mm x 350mm)	21-5/8"	13-3/4"	23-1/4"	15-3/4"	5.3 lbs
ODD 26" x 18" (650mm x 450mm)	25-5/8"	17-3/4"	27-1/8"	19-5/8"	8.19 lbs



NOTES:

1. FRAME
2. DOOR
3. POSITIVE CAM LOCK FASTENERS
4. MOUNTING HOLES

Dimensions are subject to manufacturer's tolerance of plus or minus 1/4". Elmdor/Stoneman assumes no responsibility for use of void or suspended data. Please visit www.elmdorstoneman.com for most current specifications. © Copyright 2009 Elmdor/Stoneman, City of Industry, CA, A Division of Acorn Engineering Company.

SELECTION SUMMARY & APPROVAL FOR MANUFACTURING

Model Number & Options	Quantity
Company	Date
Contact	Title
Approval for Manufacturing/Signature	

ODD

Revised: 06/26/18



ACCESS DOORS: PW Series

MODEL NUMBER AND OPTIONS SELECTION

BASE MODEL NUMBER

☐ PW Plastered Wall Access Door

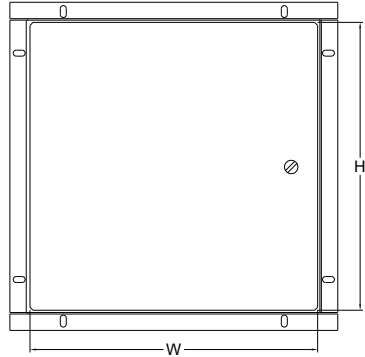
Suffix Options

- ☐ -AKL Allen Key Latch
☐ -CL Cylinder Lock (one per door)
☐ -CLD Cylinder Lock with Dust Shutter (one per door)
☐ -SS Stainless Steel Construction (Type 304 No. 4 Satin Finish)

STANDARD AVAILABLE SIZES

Special sizes available upon request.

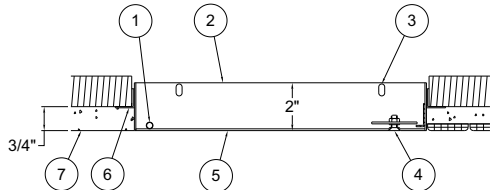
NOMINAL DOOR SIZE (W X H)	WALL OPENING (minimum required)	LATCHES	WEIGHT
PW 8" x 8"	8-1/4" x 8-1/4"	1	3.5 lbs.
PW 8" x 12"	8-1/4" x 12-1/4"	1	5 lbs.
PW 10" x 10"	10-1/4" x 10-1/4"	1	5.5 lbs.
PW 12" x 12"	12-1/4" x 12-1/4"	1	6 lbs.
PW 12" x 16"	12-1/4" x 16-1/4"	1	7.5 lbs.
PW 12" x 18"	12-1/4" x 18-1/4"	2	8.5 lbs.
PW 12" x 24"	12-1/4" x 24-1/4"	3	12 lbs.
PW 14" x 14"	14-1/4" x 14-1/4"	1	7.5 lbs.
PW 16" x 16"	16-1/4" x 16-1/4"	1	9.5 lbs.
PW 16" x 20"	16-1/4" x 20-1/4"	3	12 lbs.
PW 18" x 18"	18-1/4" x 18-1/4"	3	11 lbs.
PW 18" x 24"	18-1/4" x 24-1/4"	5	17.5 lbs.
PW 20" x 24"	20-1/4" x 24-1/4"	5	21 lbs.
PW 20" x 30"	20-1/4" x 30-1/4"	5	22 lbs.
PW 24" x 24"	24-1/4" x 24-1/4"	3	20 lbs.
PW 24" x 30"	24-1/4" x 30-1/4"	5	23.5 lbs.
PW 24" x 36"	24-1/4" x 36-1/4"	6	27 lbs.
PW 30" x 30"	30-1/4" x 30-1/4"	7	30 lbs.
PW 36" x 36"	36-1/4" x 36-1/4"	8	38 lbs.



FRONT VIEW

NOTES:

1. CONCEALED PIANO HINGE
2. FRAME
3. MOUNTING HOLES
4. SCREWDRIVER OPERATED LATCH
5. DOOR
6. METAL ANGLE (FLANGE)
7. FINISH LINE, PLASTER OVER MASONRY



SIDE VIEW

⚠ WARNING: Cancer and Reproductive Harm - www.P65Warnings.ca.gov

Dimensions are subject to manufacturer's tolerance of plus or minus 1/4". Elmdor/Stoneman assumes no responsibility for use of void or suspended data. Please visit www.elmdorstoneman.com for most current specifications. © Copyright 2009 Elmdor/Stoneman, City of Industry, CA, A Division of Acorn Engineering Company.

SELECTION SUMMARY & APPROVAL FOR MANUFACTURING

Model Number & Options	Quantity
Company	Date
Contact	Title
Approval for Manufacturing/Signature	

PW

Revised: 05/07/18



ACCESS DOORS: S009/S010 Series

MODEL NUMBER AND OPTIONS SELECTION

BASE MODEL NUMBER

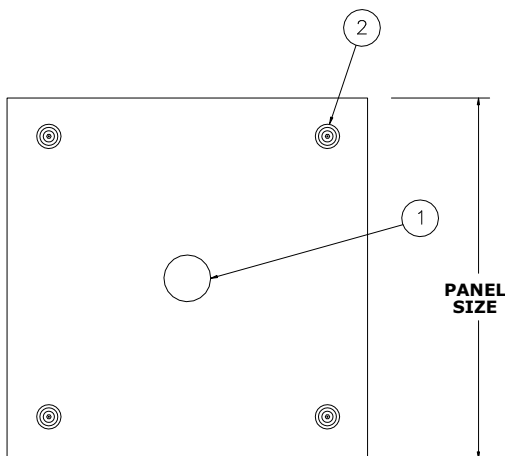
- ☐ S009 12" x 12" Frame (for urinal installation) Panel Size: 13-1/2" x 13-1/2"
☐ S010 13" (W) x 17" (H) Frame (for toilet installation) Panel Size: 15" (W) x 19" (H)

Note: Special sizes available upon request.

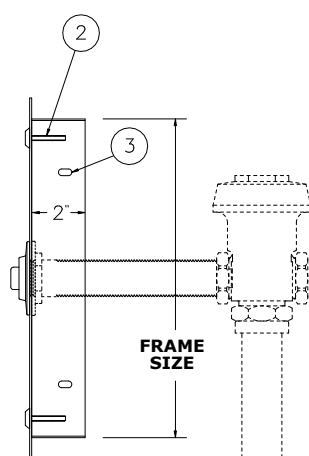
STANDARD AVAILABLE SIZES

Special sizes available upon request.

MODEL	PANEL SIZE (W X H)	FRAME SIZE (W X H)	LBS.
	INCHES	INCHES	
S009	13-1/2" x 13-1/2"	12" x 12"	6 lbs.
S010	15" x 19"	13" x 17"	7 lbs.



PANEL-FRONT VIEW



FRAME-SIDE VIEW

NOTES:

- 1-3/4" FLUSH VALVE PUSHBUTTON HOLE
- FOUR 1/4-20 x 1-1/4" STAINLESS STEEL SCREWS
- MOUNTING HOLES

Dimensions are subject to manufacturer's tolerance of plus or minus 1/4". Elmdor/Stoneman assumes no responsibility for use of void or suspended data. Please visit www.elmdorstoneman.com for most current specifications. © Copyright 2009 Elmdor/Stoneman, City of Industry, CA, A Division of Acorn Engineering Company.

SELECTION SUMMARY & APPROVAL FOR MANUFACTURING

Model Number & Options _____	Quantity _____
Company _____	Date _____
Contact _____	Title _____
Approval for Manufacturing/Signature _____	

S009/S010

Revised: 06/11/18



ACCESS DOORS: SF Series

MODEL NUMBER AND OPTIONS SELECTION

BASE MODEL NUMBER

☐ SF Surf Access Door

Suffix Options

☐ -AKL Allen Key Latch
☐ -SS Stainless Steel Construction
 (Type 304 No. 4 Satin Finish)

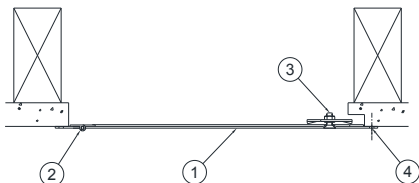
STANDARD AVAILABLE SIZES

Special sizes available upon request.

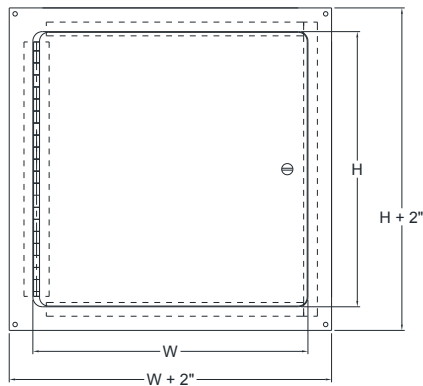
NOMINAL DOOR SIZE	ACTUAL DOOR SIZE (W x H)	LATCHES	WEIGHT
SF 8" x 8"	SF 7-5/8" x 7-5/8"	1	2.5 lbs.
SF 10" x 10"	SF 9-5/8" x 9-5/8"	1	3.5 lbs.
SF 12" x 12"	SF 11-5/8" x 11-5/8"	1	4 lbs.
SF 14" x 14"	SF 13-5/8" x 13-5/8"	1	6 lbs.
SF 16" x 16"	SF 15-5/8" x 15-5/8"	1	8 lbs.
SF 18" x 18"	SF 17-5/8" x 17-5/8"	3	9.5 lbs.
SF 22" x 22"	SF 21-5/8" x 21-5/8"	3	13.5 lbs.
SF 24" x 24"	SF 23-5/8" x 23-5/8"	3	16 lbs.

NOTES:

1. DOOR
2. PIANO HINGE
3. SCREWDRIVER OPERATED LATCH
4. MOUNTING HOLES



SIDE VIEW



FRONT VIEW

Dimensions are subject to manufacturer's tolerance of plus or minus 1/4". Elmdor/Stoneman assumes no responsibility for use of void or suspended data. Please visit www.elmdorstoneman.com for most current specifications. © Copyright 2009 Elmdor/Stoneman, City of Industry, CA, A Division of Acorn Engineering Company.

SELECTION SUMMARY & APPROVAL FOR MANUFACTURING

Model Number & Options	Quantity
Company	Date
Contact	Title
Approval for Manufacturing/Signature	

SF

Revised: 07/18/16



ACCESS DOORS: SLA Series

MODEL NUMBER AND OPTIONS SELECTION

BASE MODEL NUMBER

☐ SLA Slammer Access Door

Suffix Options

- ☐ -LD Lock Provided by Others
(1 Prep per Door)
- ☐ -MAS Masonry Anchor Straps
- ☐ -MLP Mortise Cylinder Lock
(1 Prep per Door)
- ☐ -FA12 Folger Adams #10 lock
- ☐ -FA12KEY Folger Adams key for #10 lock

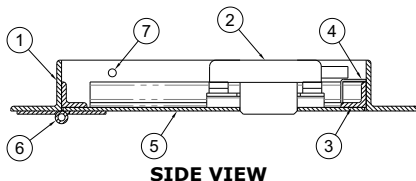
STANDARD AVAILABLE SIZES

Special sizes available upon request.

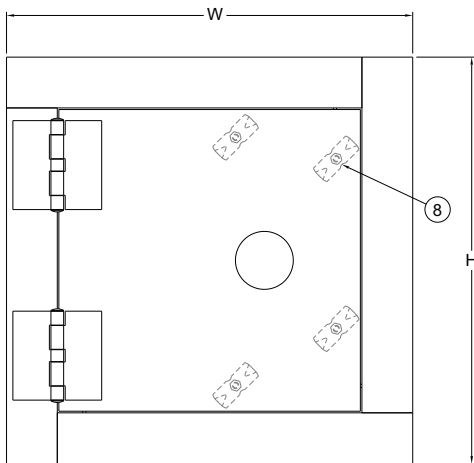
NOMINAL DOOR SIZE (W X H)	WALL OPENING (minimum required)	LOCK PREP	WEIGHT	-SDL (Extra Latches)
SLA 12" x 12"	12-1/2" x 12-1/2"	1	29 lbs.	0
SLA 16" x 16"	16-1/2" x 16-1/2"	1	37 lbs.	0
SLA 18" x 18"	18-1/2" x 18-1/2"	1	42 lbs.	0
SLA 24" x 24"	24-1/2" x 24-1/2"	1	59 lbs.	0
SLA 24" x 36"	24-1/2" x 36-1/2"	1	78.5 lbs.	4
SLA 24" x 48"	24-1/2" x 48-1/2"	1	96 lbs.	4
SLA 36" x 36"	36-1/2" x 36-1/2"	1	102 lbs.	4
SLA 36" x 48"	36-1/2" x 48-1/2"	1	126 lbs.	4

Notes:

1. Frame
2. Heavy Duty Lock
3. Door Stop
4. Lock Keeper
5. Door
6. Heavy Duty Hinge
7. Mounting Holes
8. SDL (Extra Latches)
Big Doors Only



SIDE VIEW



FRONT VIEW

Dimensions are subject to manufacturer's tolerance of plus or minus 1/4". Elmdor/Stoneman assumes no responsibility for use of void or suspended data. Please visit www.elmdorstoneman.com for most current specifications. © Copyright 2009 Elmdor/Stoneman, City of Industry, CA. A Division of Acorn Engineering Company.

SELECTION SUMMARY & APPROVAL FOR MANUFACTURING

Model Number & Options	Quantity
Company	Date
Contact	Title
Approval for Manufacturing/Signature	

SLA

Revised: 05/10/18



ACCESS DOORS: SLK Series

MODEL NUMBER AND OPTIONS SELECTION

BASE MODEL NUMBER

☐ SLK Shur-Lok Access Door

Suffix Options

- ☐ -AS Automatic Spring Door Closer
☐ -SS Stainless Steel Construction
 (Type 304 No. 4 Satin Finish)

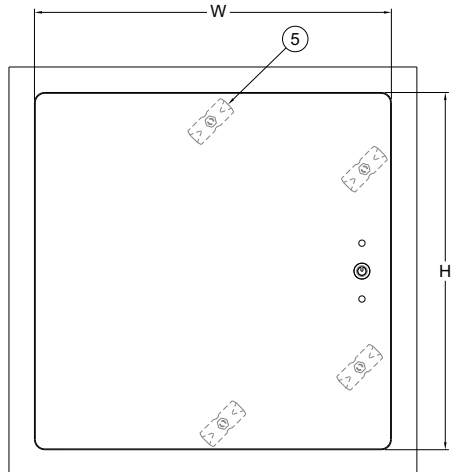
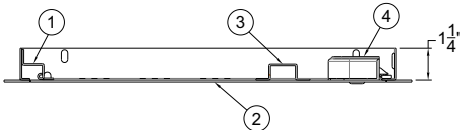
STANDARD AVAILABLE SIZES

Special sizes available upon request.

NOMINAL DOOR SIZE (W X H)	WALL OPENING (minimum required)	KEY QTY	WEIGHT	-SDL (Extra Latches)
SLK 8" x 8"	8-1/2" x 8-1/2"	1	4 lbs.	0
SLK 10" x 10"	10-1/2" x 10-1/2"	1	5.5 lbs.	0
SLK 12" x 12"	12-1/2" x 12-1/2"	1	7 lbs.	0
SLK 14" x 14"	14-1/2" x 14-1/2"	1	8 lbs.	0
SLK 16" x 16"	16-1/2" x 16-1/2"	1	10 lbs.	0
SLK 18" x 18"	18-1/2" x 18-1/2"	1	12 lbs.	2
SLK 18" x 24"	18-1/2" x 24-1/2"	1	16 lbs.	4
SLK 22" x 22"	22-1/2" x 22-1/2"	1	17.5 lbs.	2
SLK 24" x 24"	24-1/2" x 24-1/2"	1	20.5 lbs.	2
SLK 24" x 30"	24-1/2" x 30-1/2"	1	24 lbs.	4
SLK 24" x 36"	24-1/2" x 36-1/2"	1	28 lbs.	6
SLK 30" x 30"	30-1/2" x 30-1/2"	1	28.5 lbs.	6
SLK 36" x 36"	36-1/2" x 36-1/2"	1	41.5 lbs.	8

Notes:

1. Concealed Hinge
2. Door
3. Reinforcement Channel
4. Spring Door Lock
5. SDL (Extra Latches) Big Doors Only



Dimensions are subject to manufacturer's tolerance of plus or minus 1/4". Elmdor/Stoneman assumes no responsibility for use of void or suspended data. Please visit www.elmdorstoneman.com for most current specifications. © Copyright 2009 Elmdor/Stoneman, City of Industry, CA, A Division of Acorn Engineering Company.

SELECTION SUMMARY & APPROVAL FOR MANUFACTURING

Model Number & Options	Quantity
Company	Date
Contact	Title
Approval for Manufacturing/Signature	

SLK

Revised: 5/16/18



ACCESS DOORS: SMD Series

MODEL NUMBER AND OPTIONS SELECTION

BASE MODEL NUMBER

- ☐ SMD Medium Security Access Door
(12 Gage Steel)

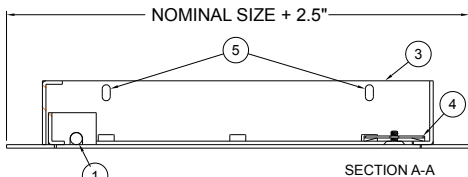
Suffix Options

- ☐ - CL Cylinder Lock (one per door)
☐ - CLD Cylinder Lock with Dust Shutter (one per door)
☐ - SS Stainless Steel Construction (Type 304 No. 4 Satin Finish)

STANDARD AVAILABLE SIZES

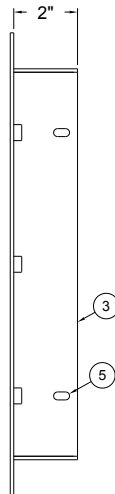
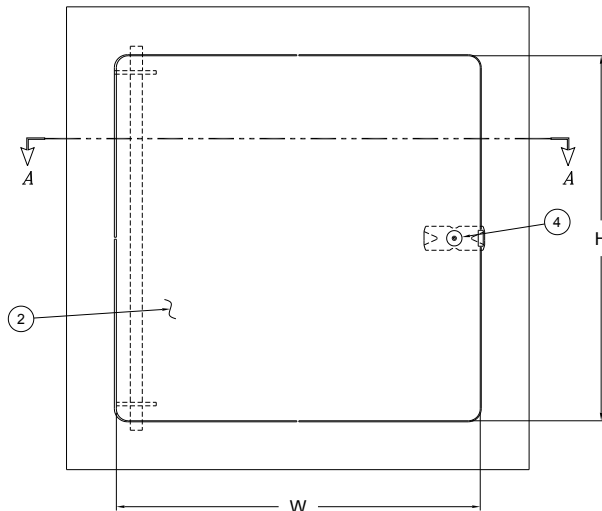
Special sizes available upon request.

NOMINAL DOOR SIZE (IN.)	W x H	LATCHES	LBS.
SMD 12" x 12"	11-1/2" x 11-1/2"	1	12
SMD 16" x 16"	15-1/2" x 15-1/2"	2	18
SMD 18" x 18"	17-1/2" x 17-1/2"	2	22
SMD 24" x 24"	23-1/2" x 23-1/2"	4	34
SMD 24" x 36"	23-1/2" x 35-1/2"	5	47
SMD 34" x 36"	33-1/2" x 35-1/2"	5	65



NOTES:

1. CONCEALED PIVOTING ROD HINGE
2. DOOR
3. FRAME
4. ALLEN HEAD WITH SECURITY PIN
5. MOUNTING HOLES



Dimensions are subject to manufacturer's tolerance of plus or minus 1/4". Elmdor/Stoneman assumes no responsibility for use of void or suspended data. Please visit www.elmdorstoneman.com for most current specifications. © Copyright 2009 Elmdor/Stoneman, City of Industry, CA, A Division of Acorn Engineering Company.

SELECTION SUMMARY & APPROVAL FOR MANUFACTURING

Model Number & Options	Quantity
Company	Date
Contact	Title
Approval for Manufacturing/Signature	

SMD

Rev: 10/25/16



ACCESS DOORS: WSR Series

MODEL NUMBER AND OPTIONS SELECTION

BASE MODEL NUMBER

- ☐ WSR Weather Strip Removable Access Door

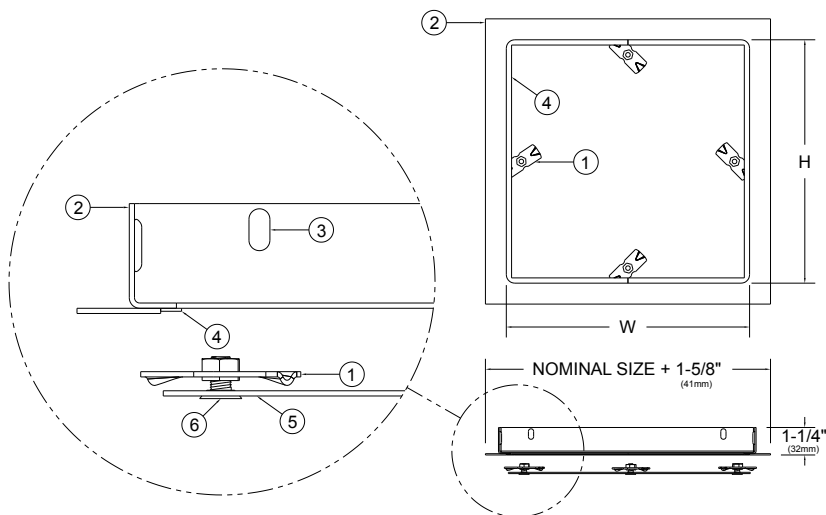
Suffix Options

- ☐ -AKL Allen Key Latch
☐ -CL Cylinder Lock (one per door)
☐ -CLD Cylinder Lock with Dust Shutter (one per door)
☐ -SS Stainless Steel Construction (Type 304 No. 4 Satin Finish)
☐ -TH 'T' Handle

STANDARD AVAILABLE SIZES

Special sizes available upon request.

NOMINAL DOOR SIZE (W x H)	WALL OPENING	LATCHES	WEIGHT
WSR 8" x 8"	8-1/2" x 8-1/2"	4	3.0 lbs.
WSR 10" x 10"	10-1/2" x 10-1/2"	4	4.0 lbs.
WSR 12" x 12"	12-1/2" x 12-1/2"	4	5.5 lbs.
WSR 14" x 14"	14-1/2" x 14-1/2"	4	6.0 lbs.
WSR 16" x 16"	16-1/2" x 16-1/2"	4	7.5 lbs.
WSR 18" x 18"	18-1/2" x 18-1/2"	6	9.0 lbs.
WSR 24" x 24"	24-1/2" x 24-1/2"	8	15.0 lbs.



1. LATCH ASSEMBLY
2. FRAME
3. FRAME MOUNTING HOLE
4. WEATHER STRIP GASKET
5. 16 GAGE DOOR PANEL
6. SLOTTED FLAT HEAD SCREW

Dimensions are subject to manufacturer's tolerance of plus or minus 1/4". Elmdor/Stoneman assumes no responsibility for use of void or suspended data. Please visit www.elmdorstoneman.com for most current specifications. © Copyright 2009 Elmdor/Stoneman, City of Industry, CA, A Division of Acorn Engineering Company.

SELECTION SUMMARY & APPROVAL FOR MANUFACTURING

Model Number & Options	Quantity
Company	Date
Contact	Title
Approval for Manufacturing/Signature	

WSR

Revised: 10/25/16

VALVE BOXES





VALVE BOXES: SVB Series

MODEL NUMBER AND OPTIONS SELECTION

BASE MODEL NUMBER

☐ SVB Surface Mounted Valve Box

Suffix Options

- ☐ - AKL Allen Key Latch
- ☐ - CL Cylinder Lock
- ☐ - CLD Cylinder Lock with Dust Shutter
- ☐ - PC Prime Coat

STANDARD AVAILABLE SIZES

Special sizes available upon request.

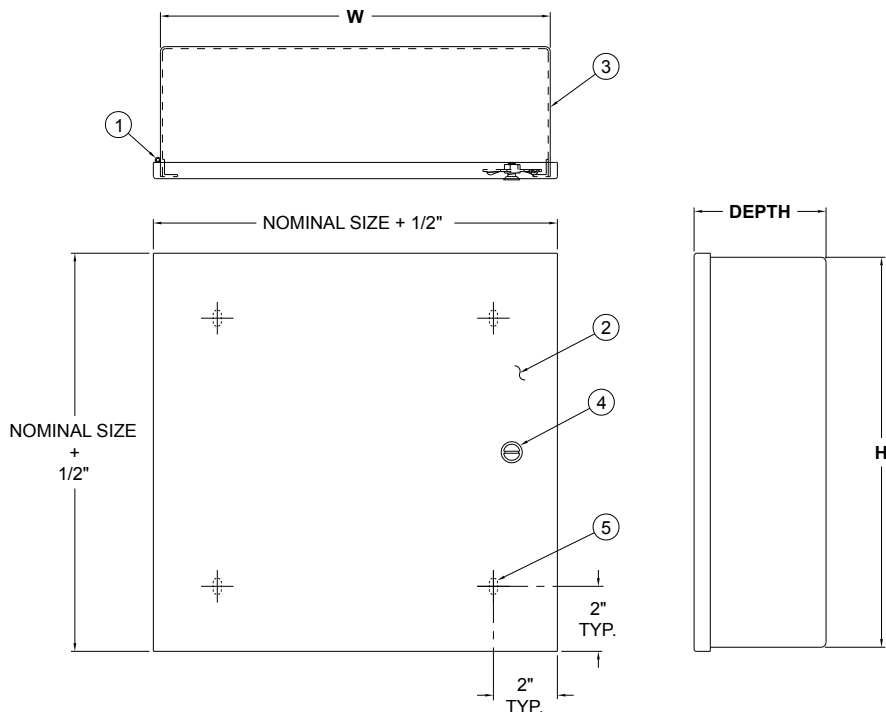
NOMINAL DOOR SIZE

(W x H x Depth)

	LATCH	WEIGHT
SVB 8" x 8" x 4"	1	10.0 lbs.
SVB 8" x 8" x 6"	1	12.0 lbs.
SVB 8" x 8" x 8"	1	12.0 lbs.
SVB 12" x 12" x 4"	1	18.0 lbs.
SVB 12" x 12" x 6"	1	20.0 lbs.
SVB 12" x 12" x 8"	1	26.0 lbs.

NOTES:

1. EXPOSED PIANO HINGE
2. DOOR
3. BOX
4. SCREWDRIVER LATCH
5. MOUNTING SLOTS



Dimensions are subject to manufacturer's tolerance of plus or minus 1/4". Elmdor/Stoneman assumes no responsibility for use of void or suspended data. Please visit www.elmdorstoneman.com for most current specifications. © Copyright 2009 Elmdor/Stoneman, City of Industry, CA, A Division of Acorn Engineering Company.

SELECTION SUMMARY & APPROVAL FOR MANUFACTURING

Model Number & Options	Quantity
Company	Date
Contact	Title
Approval for Manufacturing/Signature	

SVB

Revised: 11/11/16



ACCESS DOORS: VB Series

MODEL NUMBER AND OPTIONS SELECTION

BASE MODEL NUMBER

☐ VB Valve Box

Suffix Options

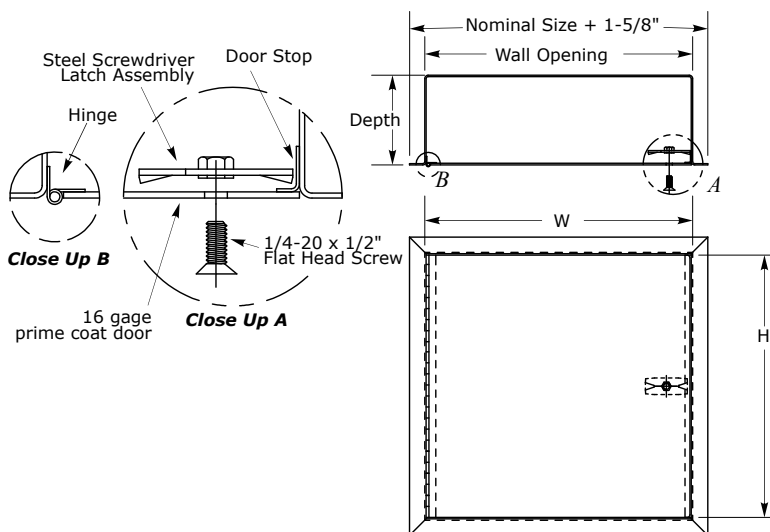
- ☐ -AKL Allen Key Latch
- ☐ -CL Cylinder Lock
- ☐ -CLD Cylinder Lock with Dust Shutter
- ☐ -SS Stainless Steel Construction.
(Type 304 No 4 Finish Satin Finish)
- ☐ -TH T Handle

STANDARD AVAILABLE SIZES

Special sizes available upon request.

NOMINAL DOOR SIZE

(W x H x Depth)	WALL OPENING	LATCH	WEIGHT
VB 8" x 8" x 4"	8-1/2" x 8-1/2"	1	10.0 lbs.
VB 8" x 8" x 6"	8-1/2" x 8-1/2"	1	12.0 lbs.
VB 12" x 12" x 4"	12-1/2" x 12-1/2"	1	18.0 lbs.
VB 12" x 12" x 6"	12-1/2" x 12-1/2"	1	20.0 lbs.
VB 14" x 14" x 4"	14-1/2" x 14-1/2"	1	26.0 lbs.
VB 14" x 14" x 6"	14-1/2" x 14-1/2"	1	28.0 lbs.
VB 16" x 16" x 4"	16-1/2" x 16-1/2"	1	32.0 lbs.
VB 16" x 16" x 6"	16-1/2" x 16-1/2"	1	34.0 lbs.



Dimensions are subject to manufacturer's tolerance of plus or minus 1/4". Elmdor/Stoneman assumes no responsibility for use of void or suspended data. Please visit www.elmdorstoneman.com for most current specifications. © Copyright 2009 Elmdor/Stoneman, City of Industry, CA, A Division of Acorn Engineering Company.

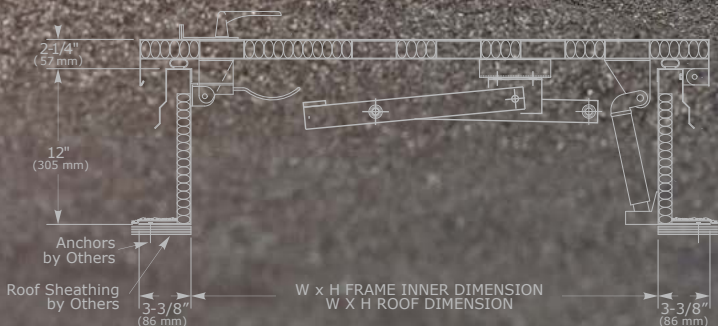
SELECTION SUMMARY & APPROVAL FOR MANUFACTURING

Model Number & Options	Quantity
Company	Date
Contact	Title
Approval for Manufacturing/Signature	

VB

Revised: 10/25/16

ROOF HATCHES





ACCESS DOORS: RAH Series

MODEL NUMBER AND OPTIONS SELECTION

BASE MODEL NUMBER

☐ RAH Roof Access Hatch

Suffix Options

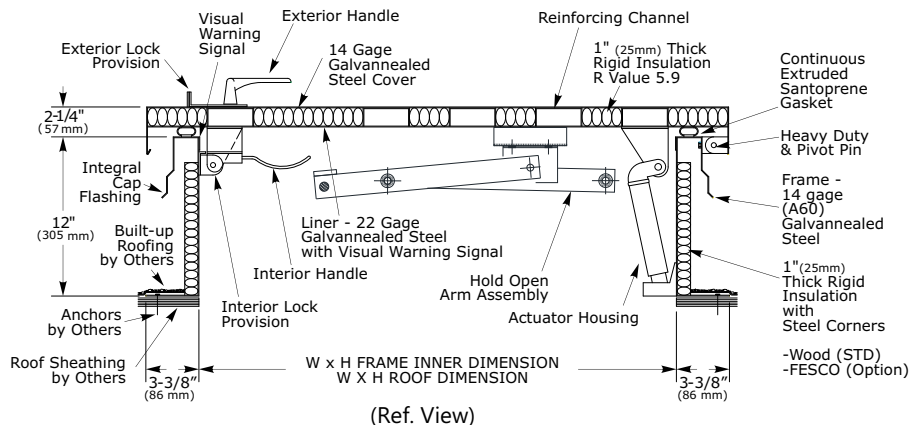
☐ - CM Curb Mount
☐ - F FESCO

STANDARD AVAILABLE SIZES

Special sizes available upon request.

NOMINAL DOOR SIZE (W X H)	FRAME INNER DIMENSION (W X H)	FRAME OUTER DIMENSION (W X H)	ROOF OPENING DIMENSION (W X H)	WEIGHT
E-24" x 24" -RAH-W	24" x 24"	31" x 31"	24" x 24"	84 lbs.
E-24" x 30" -RAH-W	24" x 30"	31" x 37"	24" x 30"	103 lbs.
E-24" x 36" -RAH-W	24" x 36"	31" x 43"	24" x 36"	124 lbs.
E-30" x 30" -RAH-W	30" x 30"	37" x 37"	30" x 30"	129 lbs.
E-30" x 36" -RAH-W	30" x 36"	37" x 43"	30" x 36"	155 lbs.
* E-30" x 54" -RAH-W	30" x 54"	37" x 61"	30" x 54"	233 lbs.
* E-30" x 96" -RAH-W	30" x 96"	37" x 103"	30" x 96"	413 lbs.
E-36" x 36" -RAH-W	36" x 36"	43" x 43"	36" x 36"	185 lbs.
E-36" x 48" -RAH-W	36" x 48"	43" x 55"	36" x 48"	248 lbs.
E-48" x 48" -RAH-W	48" x 48"	55" x 55"	48" x 48"	330 lbs.

* "W" or "H" greater than 48": The hinge will be position onto the larger side.



Dimensions are subject to manufacturer's tolerance of plus or minus 1/4". Elmdor/Stoneman assumes no responsibility for use of void or suspended data. Please visit www.elmdorstoneman.com for most current specifications. © Copyright 2009 Elmdor/Stoneman, City of Industry, CA, A Division of Acorn Engineering Company.

SELECTION SUMMARY & APPROVAL FOR MANUFACTURING

Model Number & Options	Quantity
Company	Date
Contact	Title
Approval for Manufacturing/Signature	

RAH

Revised: 05/18/16



ACCESS DOORS: RAH Series

MODEL NUMBER AND OPTIONS SELECTION

BASE MODEL NUMBER

☐ RAH Roof Access Hatch

Suffix Options

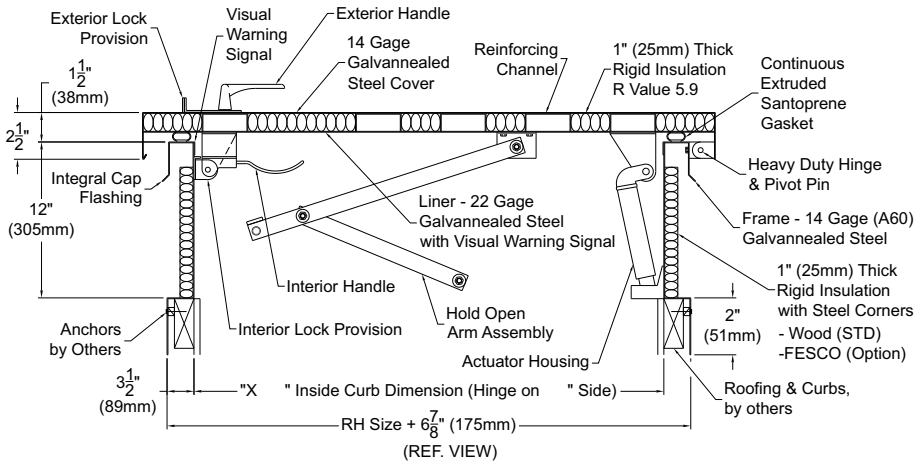
☐ - F FESCO

STANDARD AVAILABLE SIZES

Special sizes available upon request.

NOMINAL DOOR SIZE (W X H)	FRAME INNER DIMENSION (W X H)	FRAME OUTER DIMENSION (W X H)	ROOF OPENING DIMENSION (W X H)	WEIGHT
E-24" x 24" -RAH-W	24" x 24"	31" x 31"	24" x 24"	84 lbs.
E-24" x 30" -RAH-W	24" x 30"	31" x 37"	24" x 30"	103 lbs.
E-24" x 36" -RAH-W	24" x 36"	31" x 43"	24" x 36"	124 lbs.
E-30" x 30" -RAH-W	30" x 30"	37" x 37"	30" x 30"	129 lbs.
E-30" x 36" -RAH-W	30" x 36"	37" x 43"	30" x 36"	155 lbs.
* E-30" x 54" -RAH-W	30" x 54"	37" x 61"	30" x 54"	233 lbs.
* E-30" x 96" -RAH-W	30" x 96"	37" x 103"	30" x 96"	413 lbs.
E-36" x 36" -RAH-W	36" x 36"	43" x 43"	36" x 36"	185 lbs.
E-36" x 48" -RAH-W	36" x 48"	43" x 55"	36" x 48"	248 lbs.
E-48" x 48" -RAH-W	48" x 48"	55" x 55"	48" x 48"	330 lbs.

* "W" or "H" greater than 48": The hinge will be positioned onto the larger side.



Dimensions are subject to manufacturer's tolerance of plus or minus 1/4". Elmdor/Stoneman assumes no responsibility for use of void or suspended data. Please visit www.elmdorstoneman.com for most current specifications. © Copyright 2009 Elmdor/Stoneman, City of Industry, CA, A Division of Acorn Engineering Company.

SELECTION SUMMARY & APPROVAL FOR MANUFACTURING

Model Number & Options	Quantity
Company	Date
Contact	Title
Approval for Manufacturing/Signature	

PAGE 2 RAH-CM

New: 06/20/17

OPTIONS



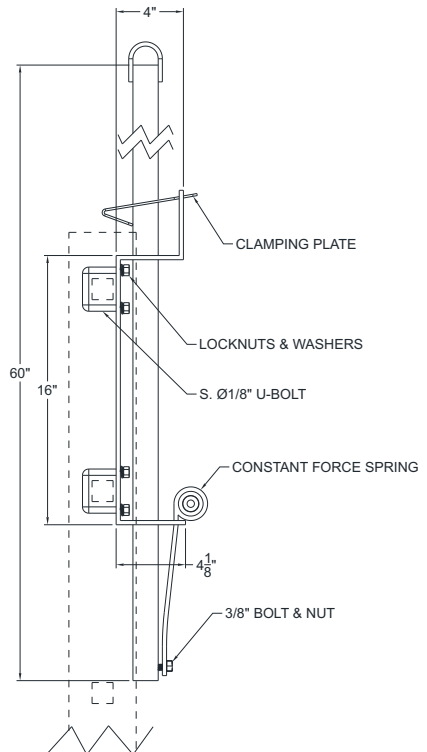
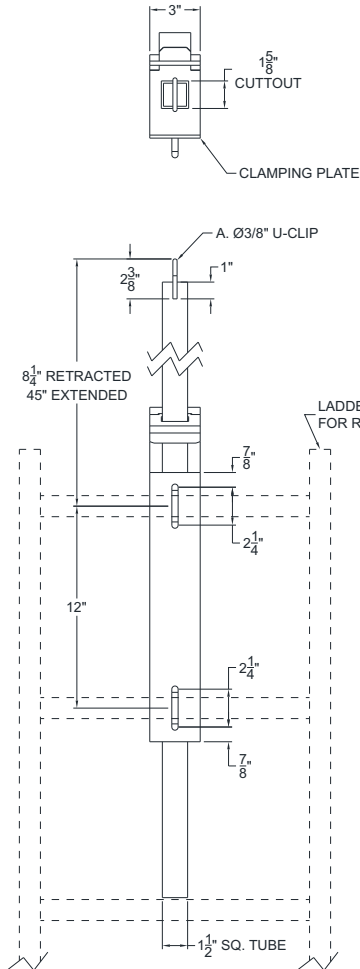


Telescoping Safety Post: TSP-1 Series

MODEL NUMBER AND OPTIONS SELECTION

BASE MODEL NUMBER

☐ TSP-1 Telescoping Safety Post



Dimensions are subject to manufacturer's tolerance of plus or minus 1/4". Elmdor/Stoneman assumes no responsibility for use of void or suspended data. Please visit www.elmdorstoneman.com for most current specifications. © Copyright 2009 Elmdor/Stoneman, City of Industry, CA, A Division of Acorn Engineering Company.

SELECTION SUMMARY & APPROVAL FOR MANUFACTURING

Model Number & Options	Quantity
Company	Date
Contact	Title
Approval for Manufacturing/Signature	

TSP-1

Revised: 07/27/16



ALLEN KEY LATCH

Model Number: Option AKL

This option is available on most non-rated doors. It provides a vandal resistant lock option. Provided one per latch; see appropriate model and size for the number of latches required.



AUTOMATIC SPRING CLOSURE

Model Number: Option AS

This option is available on our SLK series. It provides for a positive latching of the access door after use.



CYLINDER LOCK

Model Number: Option CL

As a deterrent to vandalism, option -CL provides a keyed latch for the door. Put the key into the lock and turn the key. The latch will rotate allowing the door to be opened. Typically, a single lock is provided for each door. All cylinder locks supplied are keyed alike.



CYLINDER LOCK WITH DUST SHUTTER

Model Number: Option CLD

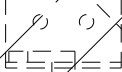
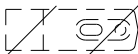
As a deterrent to vandalism, option –CLD provides a keyed latch for the door. As the key is pushed into the lock the dust shutter opens. Turn the key. The latch will rotate allowing the door to be opened. As the key is removed, dust shutter closes to prevent dust and other small particles from entering the internal mechanism of the lock (compare to our -CL option). Typically, a single lock is provided for each door. All cylinder locks supplied are keyed alike.



GALVANIZED BEAD

Model Number: Option GB

This option is available on the AT, ED and FRC models. The door is provided with a galvanized bead frame which is tapeable and supports the joint compound which is applied to provide a frameless appearance



MASONRY ANCHOR STRAPS

Model Number: Option MAS

This option is available on the DW and SLA series. For added stability when installing in a masonry application the masonry anchor straps are adhered to the frame



MORTISE LOCK PREP

Model Number: Option MLP

This option is available on the FRC and SLA series. An mortise mechanism is placed on the door allowing for installation of a mortise cylinder allowing the building's owners to provide their own secure keying system. Doors are standardly prepped for 1.125 inch mortise cylinders



T-HANDLE

Model Number: Option TH

This option is available on most non-rated doors. The T-Handle is operated by a thumb and forefinger allowing for access without the requirement of a tool such as a screwdriver. Provided one per latch; see appropriate model and size for the number of latches required

MORRIS GROUP INTERNATIONAL

WWW.MORRISGROUPINT.COM

Manufacturing Divisions

WATER CONTROLS



DRAINAGE



PLUMBING FIXTURES & ACCESS



FIRE PROTECTION



MANUFACTURING SUPPORT



Sales & Distribution



UNITED KINGDOM



ELMCO + ASSOC.



SILVER STATE



STEWART



CANADA



UNITED ARAB EMIRATES



MORRIS INDUSTRIES MEXICO



SWORDS



STREET ADDRESS
17451 HURLEY STREET
CITY OF INDUSTRY, CA 91744

MAILING ADDRESS
P.O. BOX 3527
CITY OF INDUSTRY, CA 91744

PHONE: (626) 968-8699
E-MAIL: INFO@ELMDOR.COM