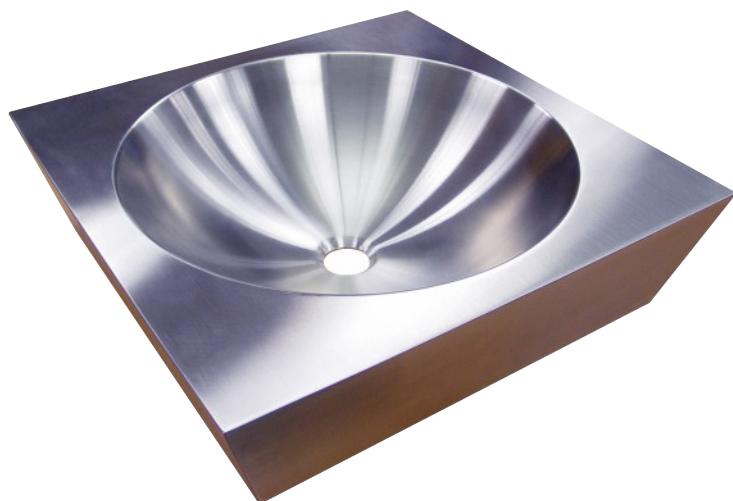


Tazón Vessel Basin



* U.S. Design Patent D546,930

Model Shown:
Model 8933-18 - Large Size Vessel with Satin Finish

- **STYLISTIC SQUARE COUNTERTOP VESSEL WITH ROUND INNER BOWL AND SLEEK TAPERED SIDES (Patented Design)**
- **18-Gage Stainless Steel Construction**
- **Satin Finish (Entire Unit) is Standard**
Optional finishes include Mira High Polish, White Gloss and Black Matte Powdercoat
- **Two Sizes are Available - Large/Small**
- **NOTE: Faucet, Drain, P-trap and Countertop NOT included.**
- **GREENGUARD GOLD Certified For Low Emissions**



Stainless Steel
is Recyclable



APPROVAL FOR MANUFACTURE

COMPANY: _____

PROJECT NAME: _____

SIGNEE'S NAME WRITTEN CLEARLY: _____

DATE: _____

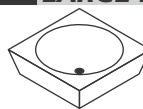
AUTHORIZED SIGNATURE: _____

DESCRIPTION

MODEL/OPTION

LARGE BASIN

INIT.



Overall Dimension: 18-1/2" (470 mm) Square
Base Dimension: 15-9/16" (470 mm) Square
Height: 5" (127 mm)
Inner Bowl Diameter: 15-3/4" (470 mm)

- ☐ **Satin Finish** 8933-18
Entire Fixture is in
Satin Finish (STANDARD)
- ☐ **Mira Finish Rim** 8933-18-HPR
Satin Finish Fixture with
Mira High Polish Rim
- ☐ **Mira Finish - All** 8933-18-HPA
Entire Fixture is in
Mira High Polish Finish
- ☐ **White Gloss Powdercoat** 8933-18-EG-10
Entire Fixture in
White Gloss Powdercoat
- ☐ **Black Matte Powdercoat** 8933-18-EG-22
Entire Fixture in
Black Matte Powdercoat

SMALL BASIN

INIT.



Overall Dimension: 15-1/2" (394 mm) Square
Base Dimension: 11" (279 mm) Square
Height: 5" (127 mm)
Inner Bowl Diameter: 12" (305 mm)

- ☐ **Satin Finish** 8933-15
Entire Fixture is in
Satin Finish (STANDARD)
- ☐ **Mira Finish Rim** 8933-15-HPR
Satin Finish Fixture with
Mira High Polish Rim
- ☐ **Mira Finish - All** 8933-15-HPA
Entire Fixture is in
Mira High Polish Finish
- ☐ **White Gloss Powdercoat** 8933-15-EG-10
Entire Fixture in
White Gloss Powdercoat
- ☐ **Black Matte Powdercoat** 8933-15-EG-22
Entire Fixture in
Black Matte Powdercoat

WARNING: Cancer and Reproductive Harm - www.P65Warnings.ca.gov

NEO-METRO® by ACORN®

A Member of Morris Group International

15125 Proctor Avenue • City of Industry, CA 91746 USA
TF 800.488.8999 • PH 626.366.4561 • FX 626.961.2200

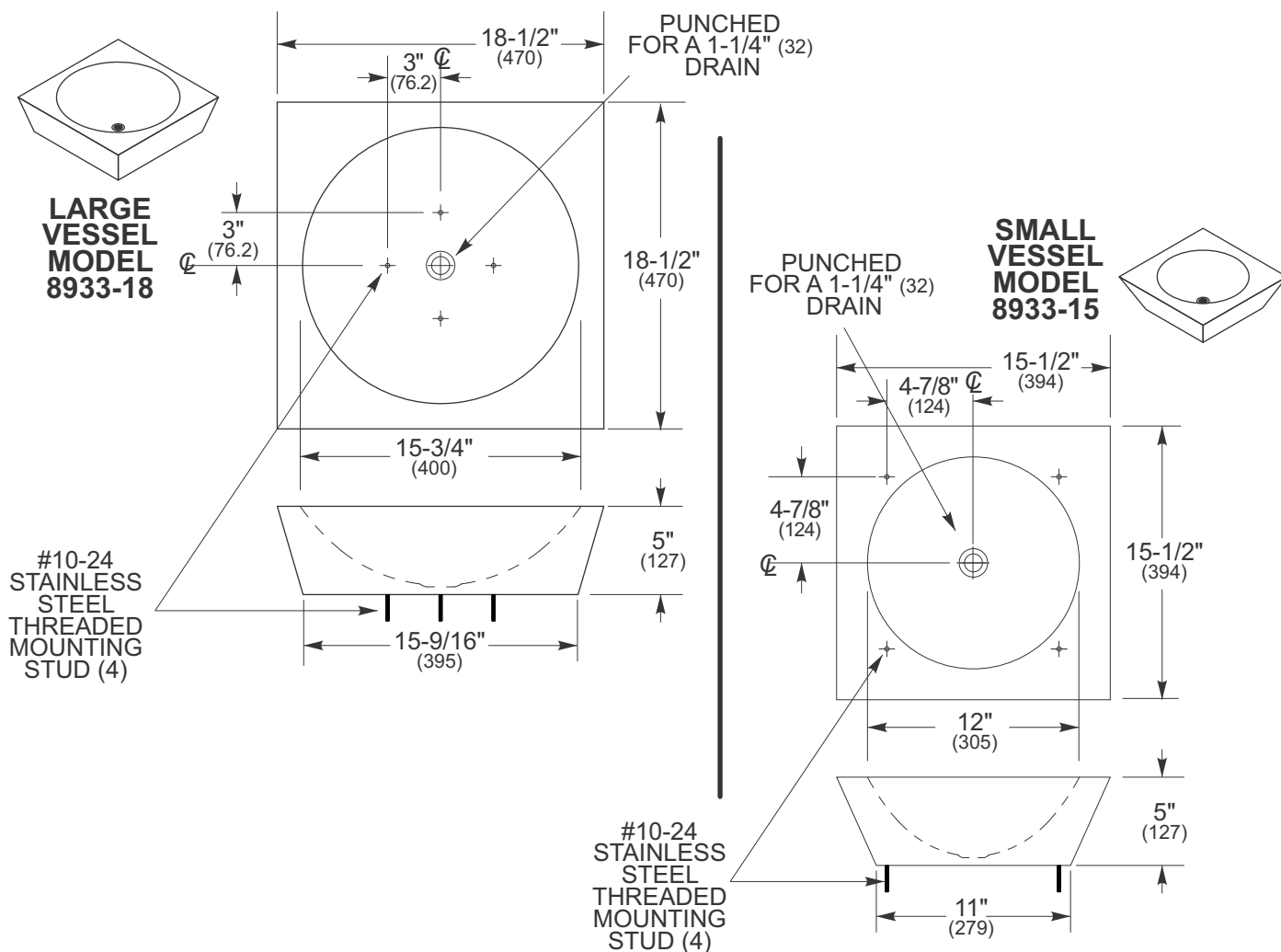
Tazón Vessel Basin

PRODUCT Specification . . . Tazón Vessel is manufactured of 18 gage Type 304 stainless steel. The square vessel features an integrated round bowl. The sides are trapezoid shaped and tapers to a smaller dimension base. The ornamental design is patented (U.S. Design Patent D546,930).

Two sizes are available. The large vessel's overall dimensions are 18-1/2" x 18-1/2" x 5" (470 x 470 x 127 mm). The round bowl measures 15-3/4" (400 mm) diameter. The small vessel's overall dimensions are 15-1/2" x 15-1/2" x 5" (394 x 394 x 127 mm). The round bowl measures 12" (305 mm) diameter.

Satin Finish is standard. Mira High Polish (just the rim or the entire vessel), White Gloss or Black Matte Powdercoating can optionally be applied.

PLUMBING Specification . . . Vessel rests on top of a counter (not included) and is attached by way of a mounting ring on the underside of the counter that marries to connection studs and is secured in place with wing nuts. The basin features a centered 1-1/4" (32 mm) diameter opening for a drain (drain and P-trap not included).



Neo-Metro assumes no responsibility for use of void or suspended data. All dimensions are nominal and subject to manufacturer change without notice.

INSTALLATION INSTRUCTIONS ARE AVAILABLE

Latest product information www.neo-metro.com

NEO-METRO® by ACORN®

A Member of Morris Group International

15125 Proctor Avenue • City of Industry, CA 91746 USA
TF 800.488.8999 • PH 626.366.4561 • FX 626.961.2200