

## Slab-Edge® Divide Solid Surface Basin



Patent Pending

### Model Shown: 3812-SO

56" Wide Solid Surface Deck with Divided Basin

APPROX. FIXTURE WEIGHT IS 120 LBS.



Patent Pending

### Model Shown: 3813-SO

80" Wide Solid Surface Deck with Divided Basin

APPROX. FIXTURE WEIGHT IS 159 LBS.

- WALL MOUNTED SOLID SURFACE DECK WITH DIVIDED BASINS, MULTIPLE LENGTHS
- INDIVIDUAL DRAINS LEADING TO A COMMON TRAP.
- ADA COMPLIANT (WHEN PROPERLY INSTALLED)
- OBC COMPLAINT (ONTARIO BUILDING CODE - CANADA)
- CBC COMPLIANT (CALIFORNIA BUILDING CODE)
- PHYSICAL PROPERTIES IN COMPLIANCE WITH:  
CSA B45.5/IAPMO Z124  
ANSI/ICPA SS-1  
(REFER TO TECHNICAL DATA SHEET FOR COMPLETE DETAILS)
- GREENGUARD GOLD CERTIFIED FOR LOW EMISSIONS



	DESCRIPTION	MODEL/OPTION #
<b>A</b>	<b>CONFIGURATION</b> - Required Selection	INIT. <input type="text"/>
<input type="checkbox"/>	3812 Divide Solid Surface Basin, 2 Users, 56" Wide	
<input type="checkbox"/>	3813 Divide Solid Surface Basin, 3 Users, 80" Wide (For Single Station Model Refer to 3801 Series)	
<b>Add(+)</b> <b>B</b>	<b>FAUCET AND CONFIGURATION</b> - Required Selection	INIT. <input type="text"/>
<input type="checkbox"/>	-H0 No Faucet Hole (For Wall Mounted Faucet)	
<input type="checkbox"/>	-H1 Single Hole (ø1-5/16" Centered Hole)	
<input type="checkbox"/>	-H34 4" Centerset (Three ø1-5/16" Holes)	
<input type="checkbox"/>	-H Hand Operation with Deck Mounted "J" Spout Pushbutton (Requires Valve Selection Below)	
<input type="checkbox"/>	-SO Sensor Operation with Deck Mounted Spout Includes Power Supply & Battery Pack (Batteries Not Included) (Requires Valves Selection Below)	
<b>Add(+)</b> <b>C</b>	<b>VALVE</b> - Required Selection with -H and -SO Options Above	INIT. <input type="text"/>
<input type="checkbox"/>	-MXT ASSE 1070 Tempering Valve	
<input type="checkbox"/>	-ST Single Temperature Valve	
<b>Add(+)</b> <b>D</b>	<b>COUNTER COLOR SELECTION</b> - Required Selection	INIT. <input type="text"/>
	<b>Corterra® Solid Surface Color</b>	
	Color: _____	
	Refer to <a href="https://www.acorneng.com/corterra-solid-surface">https://www.acorneng.com/corterra-solid-surface</a> for available colors	
<b>Add(+)</b> <b>E</b>	<b>WASTE PIPING MATERIAL</b> - Required Selection	INIT. <input type="text"/>
<input checked="" type="checkbox"/>	-PT P-Trap and Waste Piping (Provided - Specify Type)	
	<input type="checkbox"/> Plastic P-Trap <input type="checkbox"/> Brass P-Trap	
<b>Add(+)</b> <b>F</b>	<b>P-TRAP COVER ENVIRO-GLAZE COLOR</b>	INIT. <input type="text"/>
	# 4 Satin Finish Standard- Optional Selection	
	<b>Enviro-Glaze Color</b>	
	Color: _____	
	Refer to <a href="https://www.neo-metro.com/enviro-glaze">https://www.neo-metro.com/enviro-glaze</a> for available colors	
<b>Add(+)</b> <b>G</b>	<b>PRODUCT OPTIONS</b> - Optional Selection	INIT. <input type="text"/>
<input type="checkbox"/>	-MC Mounting Carriers	
<input type="checkbox"/>	-PDM Metering Liquid Soap Dispenser	

⚠ WARNING: Cancer and Reproductive Harm - [www.P65Warnings.ca.gov](http://www.P65Warnings.ca.gov)

## Slab-Edge® Divide Solid Surface Basin

**Counter with Divided Basins** is intended to be mounted to a finished wall. Washbasin is constructed of Corterra® solid surface polymer resin and combine the look of granite and the feel of commercial-grade designer Basins. Adequate wall backing is required to support this wall mount, off-floor Washbasin fixture. When mounted 34" at finished floor, fixture will comply with ANSI, UFAS and ADA requirements. Alternatively, the unit may be mounted at the height to comply with ADA requirements for children. Compliance is subject to the interpretation and requirements of the local code authority.

**Hinged P-Trap Enclosure** is included to allow easy maintenance and to conceal Valve, Supply and Waste connections. Enclosure is fabricated of 18 gage, type 304 stainless steel with a #4 satin finish engineered to provide a profile that complies with ADA, OBC (Canada), and CBC (Calif Title 24).

**Mounting Bracket** is included and fabricated of 11 gage galvanized steel with rear Anchoring Slots. Adequate wall backing is required.

**Waste Piping** for each Basin is combined to a single, common P-trap to minimize plumbing rough-ins and for ease of installation. P-trap and Piping Assembly is offered in Plastic or Brass (Selection is required when ordering). Piping is shipped loose for field install.

**Optional Sensor Operation** is available, which includes Infrared Spout, 0.5 GPM Flow Control, a plug-in Transformer and a Battery Box.

**Optional Valves** are available; ASSE 1070 compliant Valve delivers constant water flow by compensating for temperature and pressure fluctuations. Valve is factory set to 105° Fahrenheit and includes Integral Checks and Strainer to prevent cross-flow and contamination. Maximum Operating Pressure 125 PSI.



### Model Shown: 3801-SO

30" Wide Solid Surface Deck with Integrated Basin

Refer to 3801 Series submittal for matching one station Slab-Edge Basin

\*\*U.S. DESIGN PATENT D745,120



**APPROVAL FOR MANUFACTURE**

COMPANY: \_\_\_\_\_

PROJECT NAME: \_\_\_\_\_

SIGNEE'S NAME WRITTEN CLEARLY: \_\_\_\_\_

DATE: \_\_\_\_\_

AUTHORIZED SIGNATURE: \_\_\_\_\_

Latest product information [www.neo-metro.com](http://www.neo-metro.com)

Tech Sheet: **TS3810** Page **2/3** Last Revised: **02/28/2024**

**NEO-METRO® by ACORN®**

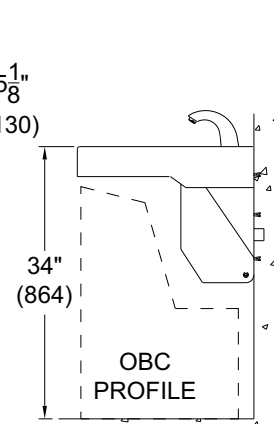
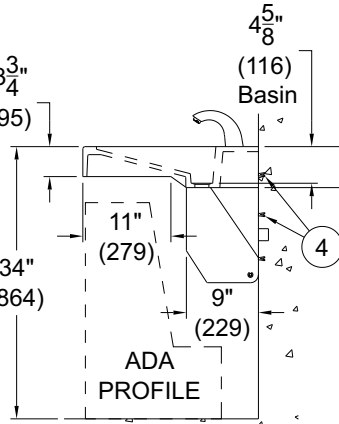
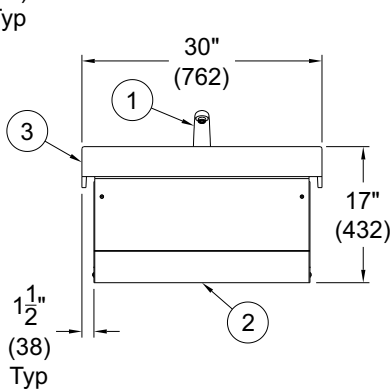
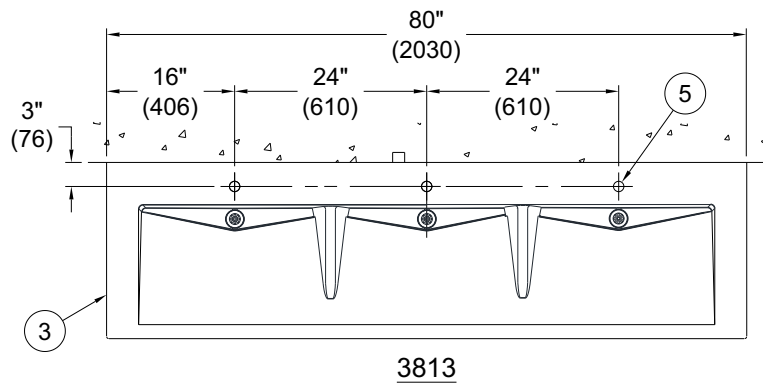
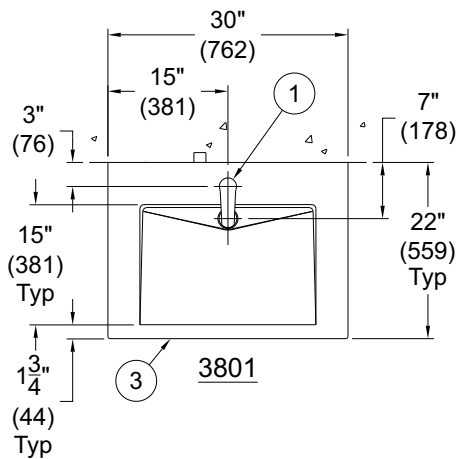
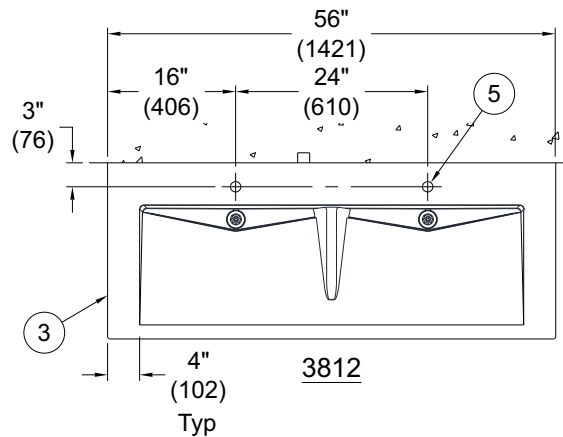
A Member of Morris Group International

15125 Proctor Avenue • City of Industry, CA 91746 USA

TF 800.488.8999 • PH 626.366.4561

## Slab-Edge® Divide Solid Surface Basin

- ① -SO DECK MOUNTED SENSOR OPERATED SPOUT SHOWN
- ② TRAP & PIPING ENCLOSURE
- ③ CORTERRA SOLID SURFACE COUNTER WITH INTEGRAL BASIN
- ④ MOUNTING HARDWARE, BY OTHERS
- ⑤ -H1 SINGLE HOLE SHOWN



All dimensions are subject to manufacturer's tolerance of plus or minus 1/2" nominal and subject to change without notice. Neo-Metro assumes no responsibility for use of void or superseded data. Neo-Metro, City of Industry, CA, Member of Morris Group International. Please visit [www.acorneng.com](http://www.acorneng.com) for most current specifications.

When properly installed,  
the basin is ADA compliant.



**INSTALLATION INSTRUCTIONS ARE AVAILABLE**

Latest product information [www.neo-metro.com](http://www.neo-metro.com)

**NEO-METRO® by ACORN®**

A Member of Morris Group International

15125 Proctor Avenue • City of Industry, CA 91746 USA

TF 800.488.8999 • PH 626.366.4561