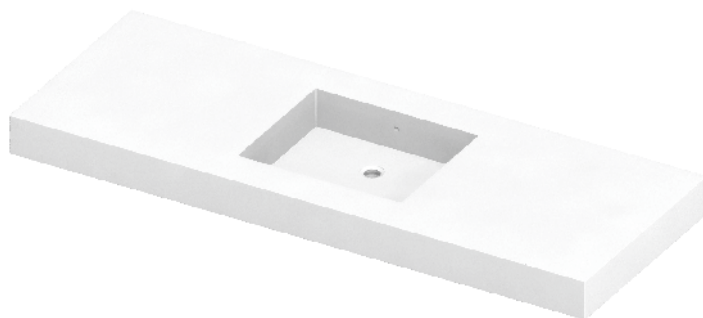


SLAB Countertop 4"



Model Shown: 9119-61-CTR-H0

61" Countertop with Integrated Basin Centered on Deck, No Faucet Drilling

- **SOLID SURFACE COUNTERTOP WITH INTEGRATED BASIN**
- **ENTIRELY CASTED IN ONE-PIECE OF SOLID SURFACE OPAQUE POLYMER RESIN**
- **INTEGRAL BASIN 17" X 14" X 4" DEPTH IS CENTERED ON DECK STANDARD**
- **INTEGRATED OVERFLOW WASTE OUTLET**

MATERIAL OF CONSTRUCTIONS PHYSICAL PROPRIETIES IN COMPLIANCE WITH:

**CSA B45.5/IAPMO Z124
ANSI/ICPA SS-1**

(REFER TO TECHNICAL DATA SHEET FOR COMPLETE DETAILS)

- **GREENGUARD GOLD CERTIFIED FOR LOW EMISSIONS**



Recyclable
Product



ADA COMPLIANT

DESCRIPTION	MODEL/OPTION #
A ORIENTATION - Required Selection INIT.	
<input type="checkbox"/> 25" SLAB Countertop 25" Length x 22" Width x 4" Height	9119-25
<input type="checkbox"/> 31" SLAB Countertop 31" Length x 22" Width x 4" Height	9119-31
<input type="checkbox"/> 37" SLAB Countertop 37" Length x 22" Width x 4" Height	9119-37
<input type="checkbox"/> 49" SLAB Countertop 49" Length x 22" Width x 4" Height	9119-49
<input type="checkbox"/> 61" SLAB Countertop 61" Length x 22" Width x 4" Height	9119-61
<input type="checkbox"/> 72" SLAB Countertop 72" Length x 22" Width x 4" Height	9119-72

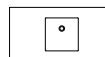
B SOLID SURFACE COLOR - Required Selection INIT.

Corterra® Solid Surface Color

Color: _____

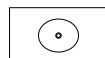
(Refer to <https://www.neo-metro.com/luxury-solid-surface> for available colors)

C BASIN SELECTION - Required Selection INIT.



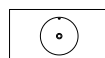
☐ **Square Basin**
14" L x 14" W x 4" H Basin
(356 x 356 x 102 mm)

-BBSQ



☐ **Oval Basin**
14" L x 17" W Basin
(356 x 432 mm)

-BBOV



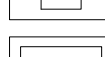
☐ **Round Basin**
Ø16" Basin
(Ø 406 mm)

-BBRD



☐ **Ramp Basin**
14" L x 17" W Basin
(356 x 432 mm)

-BBRA



☐ **Rectangular Basin**
33" x 14" Basin (-DBL Not Available)
(838 x 356 x 102 mm)

-3676



Overflow Waste is Built-in

Specify Plate Finish:

☐ Satin (Standard) ☐ High Polish

REQUIRED

Please indicate location of basin:

BACK OF DECK



☐ -LH
Left Offset

BACK OF DECK



☐ -CTR
Centered

BACK OF DECK



☐ -RH
Right Offset

BACK OF DECK



☐ -DBL
Double Basin
(49" or Greater)

D FAUCET CONFIG. - Optional Selection INIT.



☐ **No Faucet Hole**
For wall mounted faucet

- H0



☐ **Single Hole**
ø1-5/16" Centered Hole

- H1



☐ **6" Centerset**
(152 mm)

-H36



☐ **8" Centerset**
(203 mm)

-H38

Customer is required to submit Faucet Spec Sheet to confirm compatibility with Neo-Metro's faucet drilling.

SLAB Countertop 4"

PRODUCT Specification . . . The Slab Countertop is a one-piece, solid surface Deck with an integral Basin.

The unit is casted in a solid surface, opaque, polymer resin solid surface material. The durable Deck is resistant to cracking and has excellent thermal shock performance.

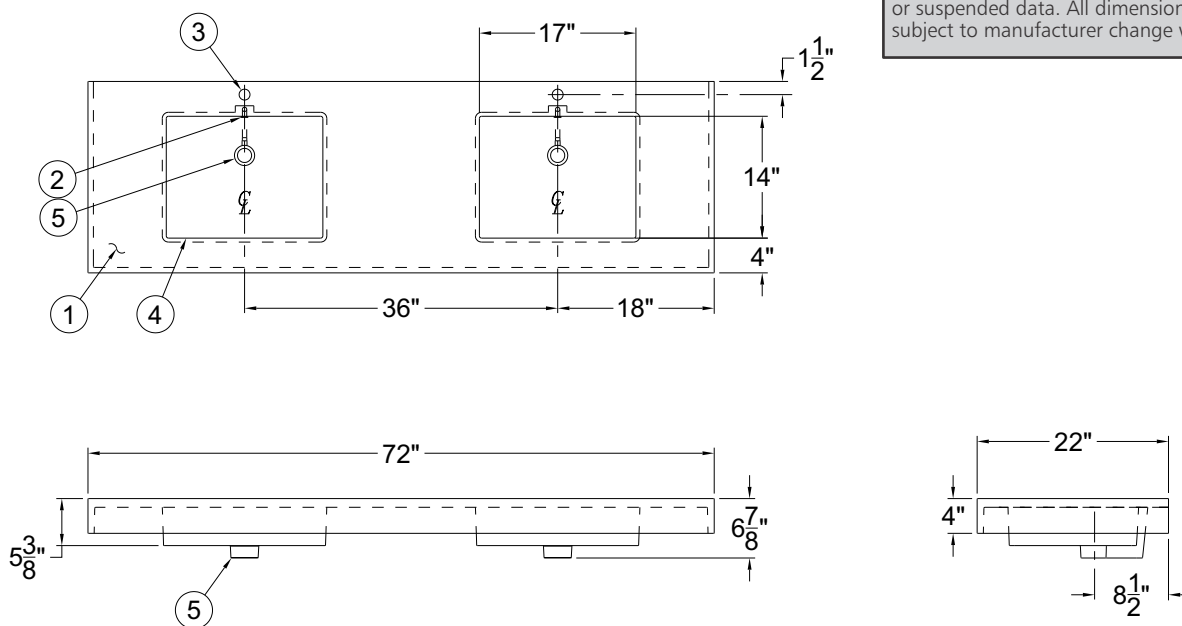
The Integral Basin, 14" x 17" x 4" depth (356 x 432 x 102 mm), can be placed on either left (-LH) or right (-RH) side of a 34" (864 mm) counter space. Left or right is in the orientation of the user facing the Deck. A dual (-DBL) configuration feature two Basins. The Drains will be configured 30" (762 mm) apart.

Standard 1-1/4" Drain Hole is provided to accommodate any Drain assembly with Overflow (Drain and P-Trap not included).

An Overflow Waste Channel is also integrated in the casted Basin(s), draining into the Drain assembly. A Satin Finish stainless steel Cover is provided. High Polish Cover may also be specified.

Faucets are not supplied but 1-5/16" (33.3 mm) holes can be drilled in a pre-configured single-hole (-H1), 6-inch (152 mm) centerset (-H36), 8-inch (203 mm) centerset (-H38) and a No Hole option (-H0), typically for wall mounted Faucets. Neo-Metro requires customers to submit specification sheet of Faucet to confirm compatibility. Custom Faucet configurations may be specified by submitting a completed and signed Faucet Drilling Worksheet. Neo-Metro stainless steel commercial faucets are available and sold separately.

Neo-Metro assumes no responsibility for use of void or suspended data. All dimensions are nominal and subject to manufacturer change without notice.



- ① MODIFIED COUNTER LAV FOR CABINET, BY OTHERS
- ② INTEGRAL OVERFLOW
- ③ Ø1-1/4" HOLE FOR FAUCET BY OTHERS
- ④ INTEGRAL BASIN, 14" X 17" X 4"
- ⑤ WASTE OPENING INTENDED FOR 1-1/4" NOMINAL OUTLET PROVIDED FOR WASTE ASSEMBLY



APPROVAL FOR MANUFACTURE

COMPANY: _____

PROJECT NAME: _____

SIGNEE'S NAME WRITTEN CLEARLY: _____

DATE: _____

AUTHORIZED SIGNATURE: _____

⚠ WARNING: Cancer and Reproductive Harm - www.P65Warnings.ca.gov

NEO-METRO® by ACORN®

A Member of Morris Group International

15125 Proctor Avenue • City of Industry, CA 91746 USA
TF 800.488.8999 • PH 626.366.4561 • FX 626.961.2200