

# Model S0560

Recessed, Wall Mounted,  
Swing Down Eye/Face Wash



## SPECIFICATIONS:

Model S0560 is a recessed, wall mounted swing down eye/face wash that is installed in the wall with a stainless steel cabinet and ABS plastic eye/face wash spray heads. The eye/face wash swings down horizontally and the water flow is activated automatically. The eye/face wash flow is terminated once the unit has been swung back up into the cabinet for storage.

## STANDARD EQUIPMENT:

**Spray Head Assembly:** ABS yellow plastic Eye/Face Wash heads supplied by a combined integral 3.7 GPM (14 LPM) Flow Control, with integral flip Dust Covers, internal Flow Controls and Filters to remove debris from the water. An anti-microbial agent is molded into the ABS material, providing integrated protection.

**Valve:** Swing down valve is mounted in the cabinet on the wall and has a 50 mesh inline strainer.

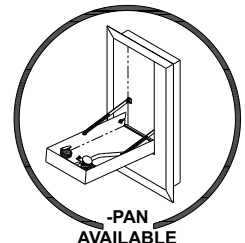
**Water Supply:** 1/2" NPT female threaded brass inlet.

**Mounting:** Wall mounted, 18 gage stainless steel cabinet.

**Universal Sign:** ANSI compliant, vertical identification sign.

**Weekly Test Tag:** A waterproof test card to record the date and inspector's name for weekly functional testing of the unit.

☐ Model: S0560



-PAN  
AVAILABLE

## OPTIONAL ACCESSORIES:

*Additional costs may be incurred*

- ☐ -AL3 Electric alarm for recessed laboratory application
- ☐ -ET71-1-BVS-OTG Thermostatic mixing valve is ASSE Listed per the ASSE 1071 standard. The tepid output water complies with ANSI Z358.1 standard. Valve includes Ball Valve Shut-offs and Outlet Temperature Gauge
- ☐ -FLW2 Flow switch, single pole
- ☐ -PAN Waste water drain pan
- ☐ -SDC Stainless steel dust covers



Member of  
U.S. Green  
Building Council



Recyclable  
Product

Acorn Safety assumes no responsibility for use of void or superseded data. © Copyright Acorn Safety®, City of Industry, CA, Division of Acorn Engineering Company®, Member of Morris Group International™. Please visit [www.acorneng.com](http://www.acorneng.com) for most current specifications.

Submittal # **S0560**  
[EFW] Revised: 01/08/20

Product carries the  
following certifications:



Test rating conditions are compliant to ANSI Z358.1



Division of  
Acorn Engineering Company®,  
Member of  
Morris Group International™

## ACORN SAFETY

P.O. Box 3527  
City of Industry, CA  
91744 U.S.A.  
Phone 800-591-9372  
626-855-4804

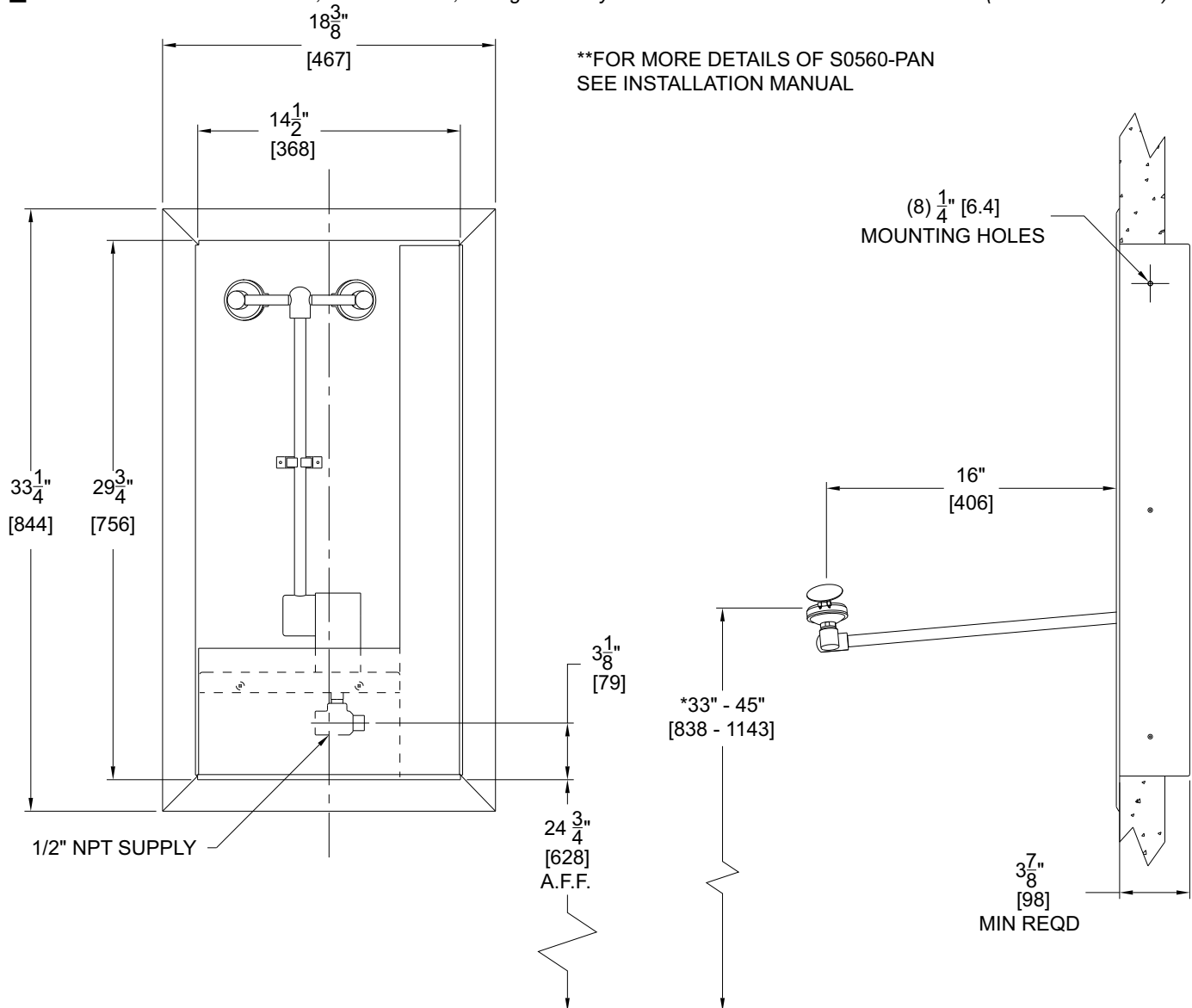
[www.acorneng.com](http://www.acorneng.com)

## TECHNICAL DIMENSIONS

All dimensions are nominal and subject to manufacturer's tolerance of plus or minus 1/2" nominal and may be subject to change without notice. Acorn Safety assumes no responsibility for use of void or superseded data. Dimensions may change with the addition of optional accessories. © 2008 Acorn Safety, a Division of Acorn Engineering Company™, Member of Morris Group International™. Please visit [www.acornsafety.com](http://www.acornsafety.com) for most current specifications.

☐ **Model S0560** : Recessed, Wall Mounted, Swing Down Eye/Face Wash (Shown)

☐ **Model S0560-PAN** : Recessed, Wall Mounted, Swing Down Eye/Face Wash w/ Waste Water Drain Pan (See Install Manual)



### GENERAL NOTES:

1. ALL DIMENSIONS ARE IN INCHES [MM].

\*2.ANSI Z358.1 REQUIRES NOZZLES TO BE MOUNTED BETWEEN 33" - 45" [838 - 1143] ABOVE THE FINISHED FLOOR.

**⚠ WARNING:** Cancer and Reproductive Harm - [www.P65Warnings.ca.gov](http://www.P65Warnings.ca.gov)

**S0560** Revised: 01/08/20

Acorn Safety warrants that its products are free from defects in material or workmanship under normal use and service for a period of one year from date of shipment. Acorn's liability under this warranty shall be discharged solely by replacement or repair of defective material, provided Acorn™ is notified in writing within one year from date of shipment, F.O.B. Industry, California.

SELECTION SUMMARY  
& APPROVAL FOR  
MANUFACTURING

Model Number & Options \_\_\_\_\_ Quantity \_\_\_\_\_

Company \_\_\_\_\_

Contact \_\_\_\_\_ Title \_\_\_\_\_

Signature \_\_\_\_\_ Date \_\_\_\_\_  
(Approval for Manufacturing)



**800-591-9372**  
or 626-855-4804  
[www.acorneng.com](http://www.acorneng.com)