



ELECTRIC TANKLESS WATER HEATER - LARGE CAPACITY

BOXER® - 3 PHASE - LOW ACTIVATION

TYPICAL APPLICATIONS:
Eye/Face Drench Shower

PRODUCT FEATURES

- Uses a digital microprocessor for temperature control
Ultra quick response times for temperature variations- 120 times per second. Microprocessor use is the most energy efficient means of heating water
- Unlimited hot water
- Saves water and energy - 99% energy efficient
- Rugged stainless steel housing (Standard)
- Space saving compact size: 26-3/4" x 21" x 7-1/2" (Std)
- Safety Features – Quantity 9 independent heater modules, each having a PID controller, flow switch, dual fuse protection, and high limit thermostat. 9 modules are divided into 3 main sections electrically and can be manually reset if the temperature limit is exceeded.
- No solenoids, loss of power = Cold Water Bypass
- Meets applicable building codes including UL, UPC
- Environmentally friendly
- Made in the U.S.A.
- User adjustable temperature 70°F - 125°F (Standard)
- Other Factory preset temperature available select single temperature between 90°F - 160°F
- 84°F preset temperature to meet ANSI Z358.1

Chronomite - Boxer® - 3 Phase - Low Activation - L9 models are manufactured to provide reliable tepid water with flow rates from 2.6 gpm to 30.0 gpm. There is no pressure and temperature relief valve needed (unless required by code), saving time and money on installation.

Housing is fabricated from rugged stainless steel.

Element assembly is fabricated from Celcon plastic.

Heating Coils are Nichrome.

For the model being selected, please place the corresponding amps, volts and watts values in the Guide Specifications above.



Chronomite - Boxer® - 3 Phase - Low Activation

GUIDE SPECIFICATION

Tankless Water Heater shall be a Chronomite Laboratories Model

ERB - _____ L / _____ VOLTS - 3P

Unit shall be provided with Celcon waterways, and Nichrome heating coils. Temperature controlled by microprocessor.

OPTIONS

- ☐ Factory Preset (F)
- ☐ De-ionized (Di)
- ☐ Auxiliary Contact (A)
- ☐ GFCI (G)
- ☐ Y - Strainer (Y)
- ☐ Siren and Beacon (Z)*
- ☐ Booster Pump (V)*
- ☐ Digital Readout (DR)
- ☐ Freeze Protection [-35°F] (B)**
- ☐ Disconnect Switch, Non-Fused (U)
- ☐ Disconnect Switch Fused (J)
- ☐ Explosion Proof (K) [C1D2 Compliant]*
- ☐ Legs (L)*
- ☐ Pedestal Mount Eye/Face Wash and Showerhead SS (S2360-AS)
- ☐ Recessed Wall Mount Eye/Face Wash SS Cabinet and Showerhead (S2160-PE-RA-PAN)
- ☐ Nema 4 Cabinet (N4)
*(30" x 24" x 10.75")
**(30" x 30" x 10.75")
- ☐ Nema 4X Cabinet (N4X)
*(30" x 24" x 10.75")
**(30" x 30" x 10.75")
- ☐ Nema 4X 316 Cabinet (X6)
*(30" x 24" x 10.75")
**(30" x 30" x 10.75")

* Requires (30" x 24" x 10.75") Cabinet

** Requires (30" x 30" x 10.75") Cabinet

MODEL	AMPS/PHASE	3 ∅ VOLTAGE	WATTS	ACTIVATION GPM	°F TEMPERATURE RISE @		
					20 GPM	23 GPM	30 GPM
ERB-180L/208_3P	104	208	37400	2.6	13	11	9
ERB-270L/208_3P	156	208	56200	2.6	19	17	13
ERB-308L/208_3P	178	208	64000	2.6	22	19	15
ERB-360L/208_3P	208	208	75000	2.6	26	22	17
ERB-360L/240_3P	208	240	86000	2.6	29	26	20
ERB-81L/480_3P	47	480	39000	2.6	13	12	9
ERB-100L/480_3P	58	480	48000	2.6	16	14	11
ERB-113L/480_3P	65	480	54000	2.6	18	16	12
ERB-131L/480_3P	76	480	63000	2.6	22	19	14
ERB-160L/480_3P	93	480	77000	2.6	26	23	18
ERB-240L/480_3P	139	480	115000	2.6	39	34	26
ERB-320L/480_3P	185	480	154000	2.6	53	46	35

Complies with Standards for:

LISTED TO:
UL STD 499

CERTIFIED TO:
CAN/CSA STD C22.2 NO. 88



CALGreen

CHRONOMITE LABORATORIES, INC.

17451 Hurley St. :: City of Industry, CA 91744
Phone 800-447-4962 :: 626-937-4270
Fax 626-937-4279 :: www.chronomite.com

MEMBER OF



MORRIS GROUP
INTERNATIONAL



ELECTRIC TANKLESS WATER HEATER - LARGE CAPACITY

BOXER® - 3 PHASE - LOW ACTIVATION

LOW ACTIVATION METRIC CHART

MODEL	AMPS/PHASE	3 ∅ VOLTAGE	WATTS	ACTIVATION LPM	°C TEMPERATURE RISE @		
					75 LPM	87 LPM	114 LPM
ERB-180L/380_3P	104	380	68400	9.8	13	11	9
ERB-270L/380_3P	156	380	102600	9.8	20	17	13
ERB-360L/380_3P	208	380	136800	9.8	26	23	17
ERB-180L/415_3P	104	415	74700	9.8	14	12	9
ERB-270L/415_3P	156	415	112100	9.8	21	19	14
ERB-360L/415_3P	208	415	149400	9.8	29	25	19
ERB-128L/600_3P	74	600	77000	9.8	15	13	10
ERB-192L/600_3P	111	600	115000	9.8	22	19	14
ERB-256L/600_3P	148	600	154000	9.8	29	25	19

TECHNICAL DIMENSIONS

CHRONOMITE - BOXER® - 3 PHASE - LOW ACTIVATION

Dimensions: 533 (H) x 679 x 191mm

Weight: 34.5 Kg

Materials: Rugged Stainless Steel Housing
Celcon Plastic Element Assembly
with Nichrome Coils

Housing Color: Stainless Steel

Minimum Operating Flow Rate: 9.8 LPM

Minimum Operating Pressure: 172 kPa

Maximum Operating Pressure: 552 kPa

Maximum Pressure: 1034 kPa

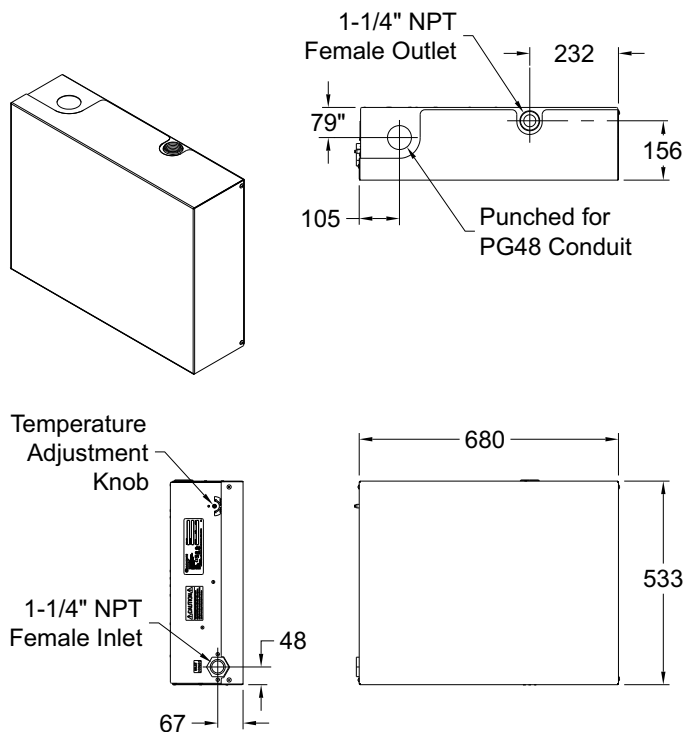
Maximum Water Temperature: 71°C

Maximum Ambient Operating Temperature: 60°C

Listing: UL, IAPMO, UPC, ADA, ETL

GENERAL NOTES:

- The microprocessor adjusts the heater's power for variations in flow rates, inlet water temperature and pressure to assure the selected factory preset water temperature.
- 240V models when operated at 220V will have approximately a 15% wattage decrease.



Member of
U.S. Green
Building Council



Water
Conserving
Product



Made in
the USA

Chronomite Laboratories assumes no responsibility for use of void or suspended data. © Copyright Chronomite Laboratories, Inc.
Acorn Family of Companies, City of Industry, CA Please visit www.chronomite.com for most current specifications.

SELECTION SUMMARY
& APPROVAL FOR
MANUFACTURING

Company _____

Model Number & Options _____ Quantity _____

Contact _____ Title _____

Signature (Approval for Manufacturing) _____ Date _____

CHRONOMITE
LABORATORIES, INC.

PH. 800-447-4962

626-937-4270

FAX 626-937-4279

www.chronomite.com



ELECTRIC TANKLESS WATER HEATER - LARGE CAPACITY

BOXER® - 3 PHASE - LOW ACTIVATION

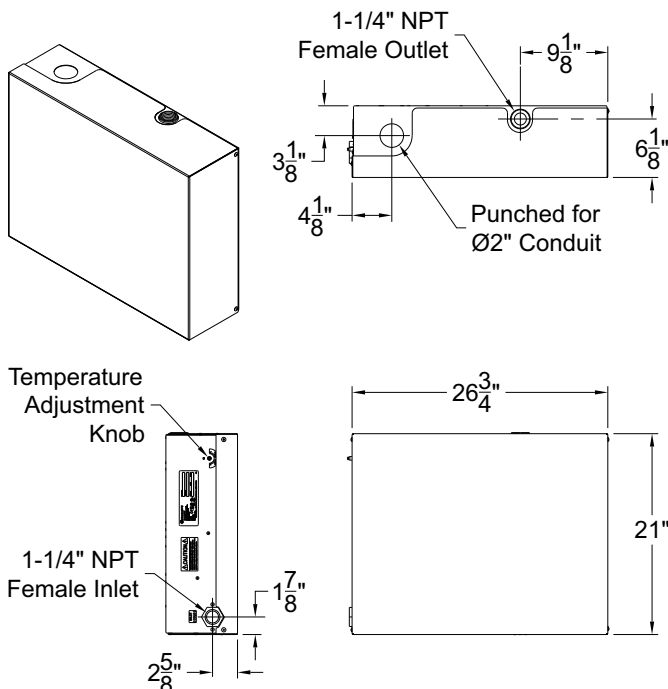
TECHNICAL DIMENSIONS

CHRONOMITE - BOXER® - 3 PHASE - LOW ACTIVATION

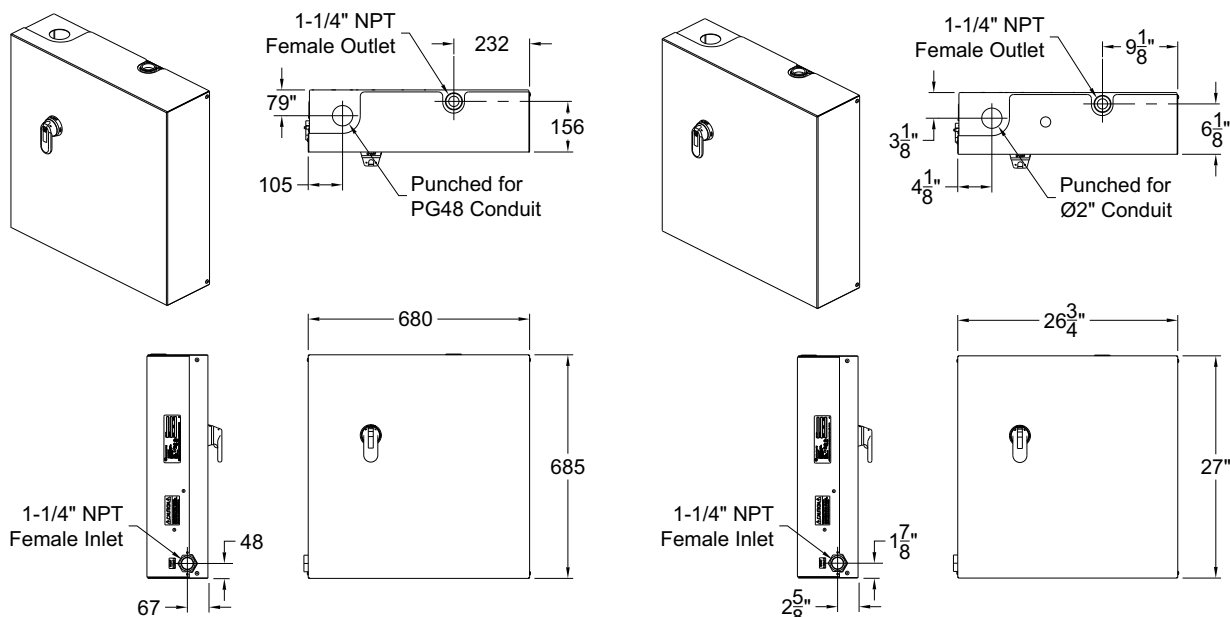
Dimensions:	21" (H) x 26-3/4" x 7-1/2"
Weight:	76 LBS
Materials:	Rugged Stainless Steel Housing Celcon Plastic Element Assembly with Nichrome Coils
Housing Color:	Stainless Steel
Minimum Operating Flow Rate:	2.6 GPM
Minimum Operating Pressure:	25 PSI
Maximum Operating Pressure:	80 PSI
Maximum Pressure:	150 PSI
Maximum Water Temperature:	160°F
Maximum Ambient Operating Temperature:	140°F
Listing:	UL, IAPMO, UPC, ADA, ETL

GENERAL NOTES:

- The microprocessor adjusts the heater's power for variations in flow rates, inlet water temperature and pressure to assure the selected factory preset water temperature.
- 240V models when operated at 220V will have approximately a 15% wattage decrease.



BOXER® WITH DISCONNECT SWITCH, FUSED (J) OR NON-FUSED (U) OPTIONS



Chronomite Laboratories assumes no responsibility for use of void or suspended data. © Copyright Chronomite Laboratories, Inc. Acorn Family of Companies, City of Industry, CA Please visit www.chronomite.com for most current specifications.

SELECTION SUMMARY
& APPROVAL FOR
MANUFACTURING

Company _____	Quantity _____
Model Number & Options _____	
Contact _____	Title _____
Signature (Approval for Manufacturing) _____	Date _____

CHRONOMITE
LABORATORIES, INC.

PH. 800-447-4962

626-937-4270

FAX 626-937-4279

www.chronomite.com

BOXER® - 3 PHASE - LOW ACTIVATION

○ S2360-AS Combination Station, Eye/Face Wash and Showerhead, All Stainless Steel

STANDARD EQUIPMENT:

Showerhead: Stainless steel, 8" diameter showerhead with a 20 gpm flow regulator.

Shower Valve: 1" NPT stainless steel stay-open ball valve. Unit is provided with a stainless steel actuator arm and a 29" stainless steel pull rod.

Eye/Face Wash Bowl: Stainless steel, 11-3/4" diameter bowl.

Spray Head Assembly: ABS yellow plastic Eye/Face Wash heads supplied by a combined integral 3.7 GPM (14 LPM) Flow Control, with integral flip Dust Covers, internal Flow Controls and Filters to remove debris from the water. An anti-microbial agent is molded into the ABS material, providing integrated protection.

Eye/Face Wash Valve: 1/2" NPT stainless steel stay-open ball valve with a stainless steel push handle and a 50 mesh inline strainer.

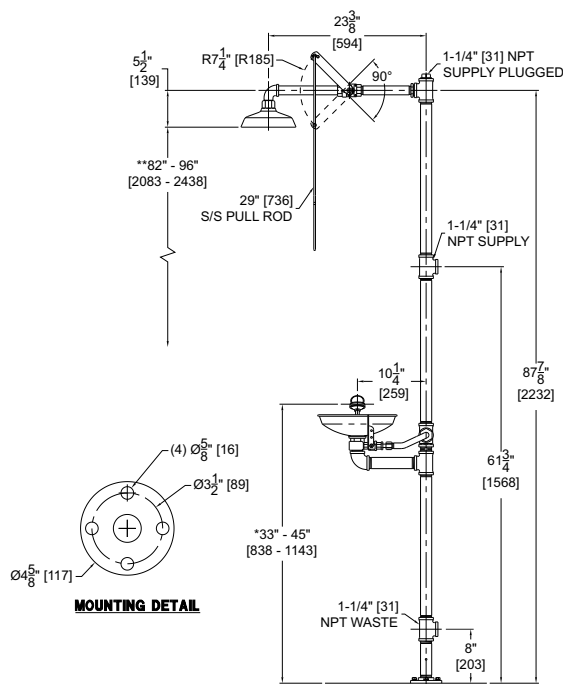
Water Supply: 1-1/4" NPT female threaded side or top inlet.

Waste: 1-1/4" NPT female outlet.

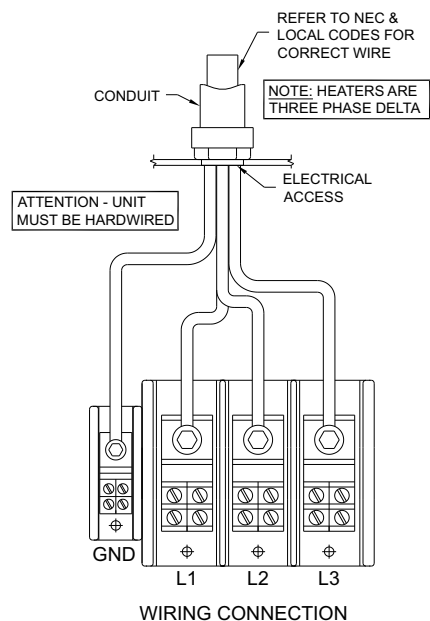
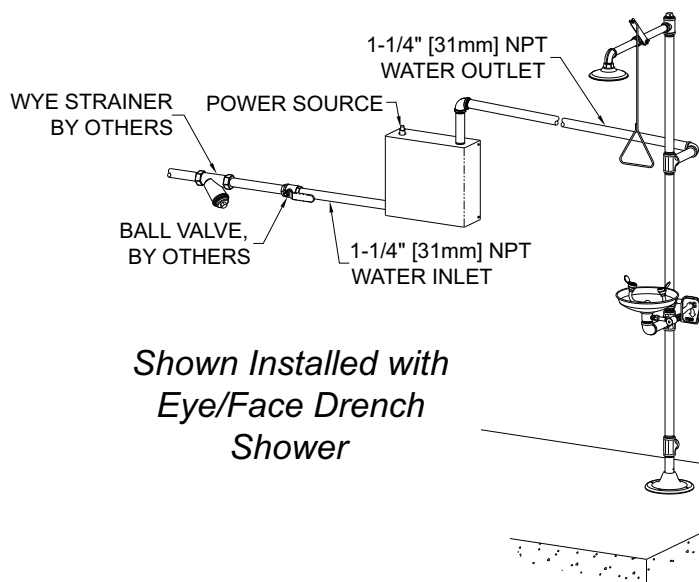
Piping & Mounting: Schedule 40 stainless steel piping and a 4-5/8" diameter stainless steel floor flange.

Universal Sign: ANSI compliant, vertical identification sign.

Weekly Test Tag: A waterproof test card to record the date and inspector's name for weekly functional testing of the unit.



INSTALLATION DIAGRAM



Chronomite Laboratories assumes no responsibility for use of void or suspended data. © Copyright Chronomite Laboratories, Inc. Acorn Family of Companies, City of Industry, CA Please visit www.chronomite.com for most current specifications.

SELECTION SUMMARY & APPROVAL FOR MANUFACTURING	Company _____
	Model Number & Options _____ Quantity _____
	Contact _____ Title _____
	Signature (Approval for Manufacturing) _____
	Date _____

CHRONOMITE
LABORATORIES, INC.

PH. 800-447-4962

626-937-4270

FAX 626-937-4279

www.chronomite.com