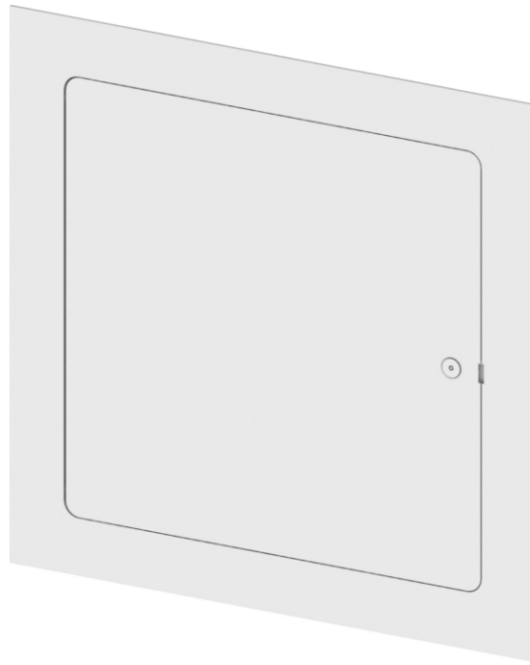


SMD Series**Medium Security Access Doors**

Doors are ideally suited for new installations or for remodeling detention centers, behavioral health facilities and schools.

Door and Frame are fabricated from 12 gage, galvanized steel with a white prime coat finish.

Frame is fabricated from 12 gage, galvanized steel with a white prime coat finish and provided with bolt holes.

Pivoting Rod Hinge continuous, concealed.

Latch is allen head with security pin.

Finish is a white prime coat.

Guide Specification

Provide Elmdor® SMD Series, Medium Security Access Doors (Specify model number and options). Access door and frame shall be fabricated from 12 gage, galvanized steel with a white prime coat finish. The door shall have rounded safety corners and a concealed pivoting rod hinge. Frame shall be one piece construction with no mitres or welds on the face. Latch shall be allen head with security pin operated. Finish shall be a white prime coat.



Member of U.S. Green
Building Council

SMD

Revised: 04/12/19

Recyclable
Product



MODEL NUMBER AND OPTIONS SELECTION

BASE MODEL NUMBER

- ☐ SMD Medium Security Access Door
(12 Gage Steel)

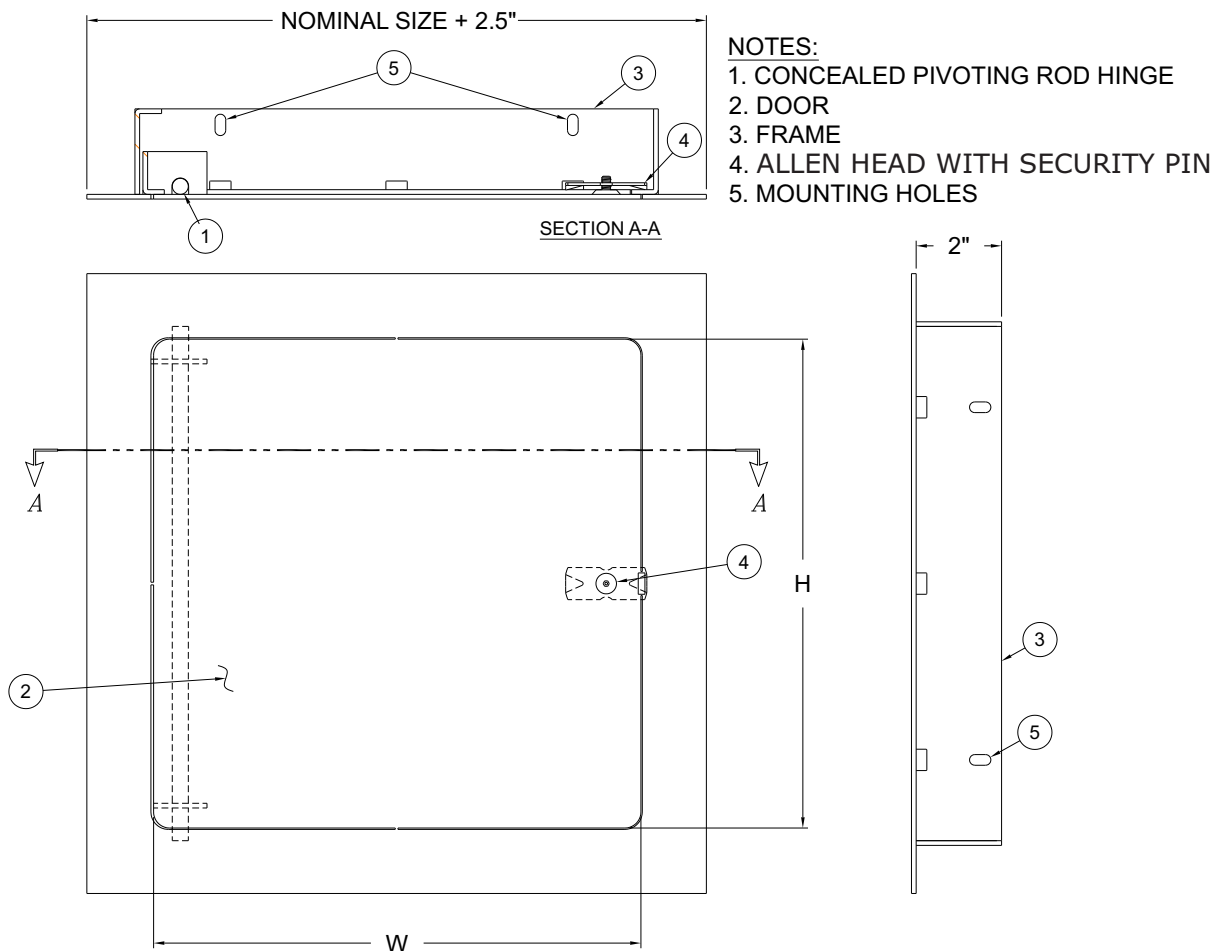
Suffix Options

- ☐ - CL Cylinder Lock (one per door)
☐ - CLD Cylinder Lock with Dust Shutter
(one per door)
☐ - SS Stainless Steel Construction
(Type 304 No. 4 Satin Finish)

STANDARD AVAILABLE SIZES

Special sizes available upon request.

NOMINAL DOOR SIZE (W x H)	WALL OPENING	LATCHES	LBS.
SMD 12" x 12"	12-1/2" x 12-1/2"	1	12
SMD 16" x 16"	16-1/2" x 16-1/2"	2	18
SMD 18" x 18"	18-1/2" x 18-1/2"	2	22
SMD 24" x 24"	24-1/2" x 24-1/2"	4	34
SMD 24" x 36"	24-1/2" x 36-1/2"	5	47
SMD 36" x 36"	36-1/2" x 36-1/2"	5	65



WARNING: Cancer and Reproductive Harm - www.P65Warnings.ca.gov

Dimensions are subject to manufacturer's tolerance of plus or minus 1/4". Elmdor/Stoneman assumes no responsibility for use of void or suspended data. Please visit www.elmdorstoneman.com for most current specifications. © Copyright 2009 Elmdor/Stoneman, City of Industry, CA, A Division of Acorn Engineering Company.

SELECTION SUMMARY & APPROVAL FOR MANUFACTURING

Model Number & Options _____ Quantity _____
Company _____ Date _____
Contact _____ Title _____
Approval for Manufacturing/Signature _____

SMD

Revised: 04/12/19