

# Model S2340-AS

Combination Station, Eye/Face Wash  
and Showerhead, All Stainless Steel



## SPECIFICATIONS:

Model S2340-AS is an all stainless steel, pedestal mounted combination station with an eye/face wash, with a stainless steel bowl, ABS plastic eye/face wash spray heads, an inline strainer and a stay-open 1/2" ball valve with a push handle and a shower with a stainless steel showerhead and a 1" stay-open ball valve with a pull rod.

## STANDARD EQUIPMENT:

**Showerhead:** Stainless steel, 8" diameter showerhead with a 20 gpm flow regulator.

**Shower Valve:** 1" NPT stainless steel stay-open ball valve. Unit is provided with a stainless steel actuator arm and a 29" stainless steel pull rod.

**Eye/Face Wash Bowl:** Stainless steel, 11-3/4" diameter bowl.

**Spray Head Assembly:** ABS yellow plastic Eye/Face Wash heads supplied by a combined integral 3.7 GPM (14 LPM) Flow Control, with integral flip Dust Covers, internal Flow Controls and Filters to remove debris from the water. An anti-microbial agent is molded into the ABS material, providing integrated protection.

**Eye/Face Wash Valve:** 1/2" NPT stainless steel stay-open ball valve with a stainless steel push handle and a 50 mesh inline strainer.

**Water Supply:** 1-1/4" NPT female threaded side or top inlet.

**Waste:** 1-1/4" NPT female outlet.

**Piping & Mounting:** Schedule 40 stainless steel piping and a 4-5/8" diameter stainless steel floor flange.

**Universal Sign:** ANSI compliant, vertical identification sign.

**Weekly Test Tag:** A waterproof test card to record the date and inspector's name for weekly functional testing of the unit.

☐ Model: S2340-AS



## OPTIONAL ACCESSORIES:

Additional costs may be incurred

- ☐ -AL2 Electric alarm with flashing light and horn
- ☐ -BF Barrier free, handicap accessible
- ☐ -CS1 Stainless steel "clam shell" cover
- ☐ -ET71-2-BVS-OTG Thermostatic mixing valve is ASSE Listed per the ASSE 1071 standard. The tepid output water complies with ANSI Z358.1 standard. Valve includes Ball Valve Shut-offs, Outlet Temperature Gauge
- ☐ -FLW1 Flow switch, single pole
- ☐ -FPV Freeze protection valve (eye/face wash only)
- ☐ -HFC Hand foot control
- ☐ -MC1 Modesty curtain for horizontal showers
- ☐ -MS1 MAP (magnetically actuated proximity) switch, for one (1) actuator
- ☐ -MS2 MAP (magnetically actuated proximity) switches, for two (2) actuators
- ☐ -SDC Stainless steel dust covers
- ☐ -SPV Scald protection valve (eye/face wash only)
- ☐ "1" Auxiliary hand-held drench hose with a self-closing valve (Use model S2341-AS)



Member of  
U.S. Green  
Building Council



Recyclable  
Product

Acorn Safety assumes no responsibility for use of void or superseded data. © Copyright Acorn Safety®, City of Industry, CA, Division of Acorn Engineering Company®, Member of Morris Group International™. Please visit [www.acorneng.com](http://www.acorneng.com) for most current specifications.

Submittal # **S2340-AS**  
[CMB] Date: 01/09/20

Product carries the following certifications:



Test rating conditions are compliant to ANSI Z358.1



Division of  
Acorn Engineering Company®,  
Member of  
Morris Group International™

**ACORN SAFETY**

P.O. Box 3527  
City of Industry, CA  
91744 U.S.A.

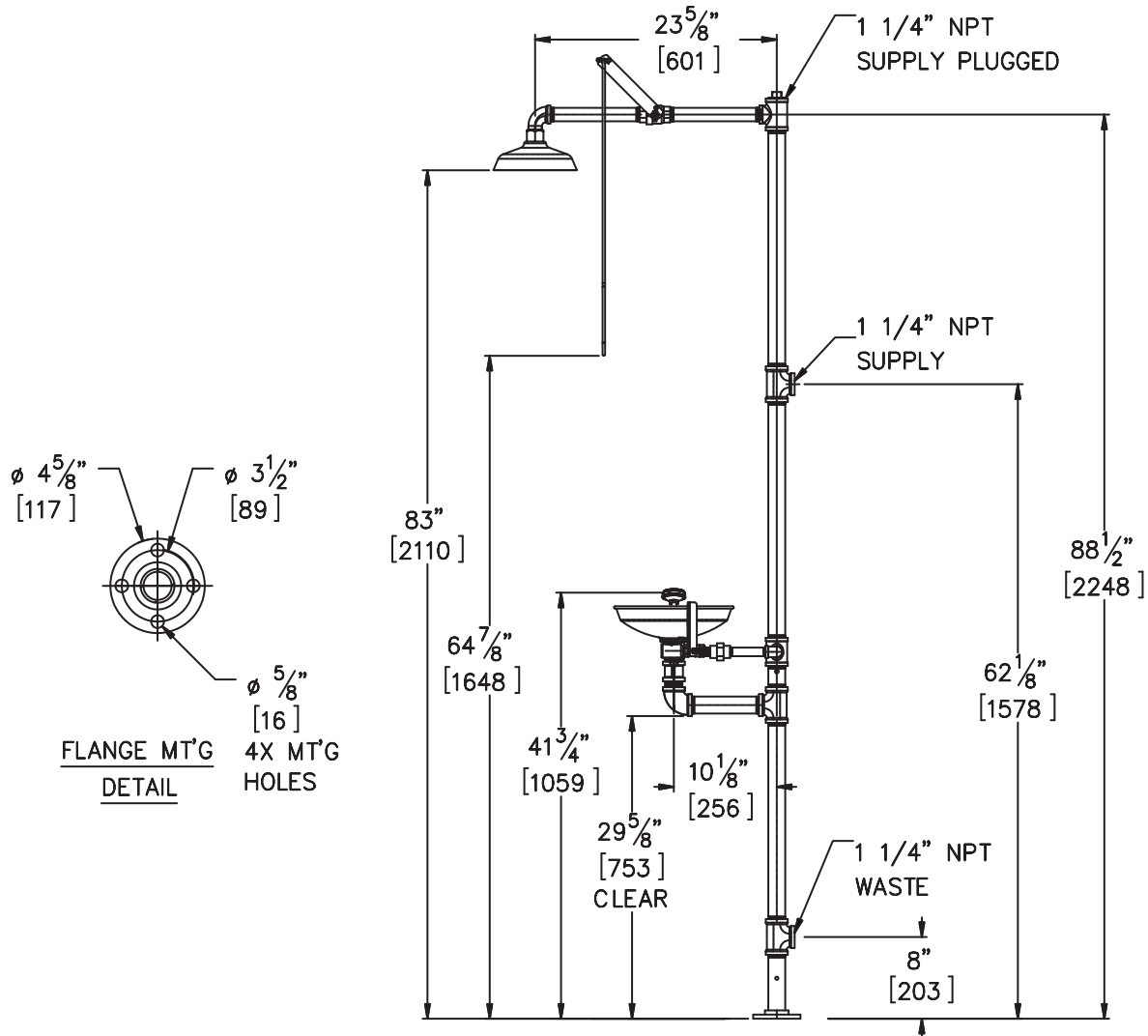
Phone 800-591-9372  
626-855-4804

[www.acorneng.com](http://www.acorneng.com)

## TECHNICAL DIMENSIONS

All dimensions are subject to manufacturer's tolerance of plus or minus 1/2" nominal and subject to change without notice. Acorn Safety® assumes no responsibility for use of void or superseded data. Dimensions may change with the addition of optional accessories. © Acorn Safety®, A Division of Acorn Engineering Company®, Member of Morris Group International™. Please visit [www.acorneng.com](http://www.acorneng.com) for most current specifications.

☐ **Model S2340-AS** : Combination Station, Eye/Face Wash and Showerhead, All Stainless Steel



### GENERAL NOTES:

1. ALL DIMENSIONS ARE IN INCHES [MM].

⚠ WARNING: Cancer and Reproductive Harm - [www.P65Warnings.ca.gov](http://www.P65Warnings.ca.gov)

**S2340-AS** Date: 01/09/20

Acorn Safety warrants that its products are free from defects in material or workmanship under normal use and service for a period of one year from date of shipment. Acorn's liability under this warranty shall be discharged solely by replacement or repair of defective material, provided Acorn is notified in writing within one year from date of shipment, F.O.B. Industry, California.

SELECTION SUMMARY  
& APPROVAL FOR  
MANUFACTURING

Model Number & Options \_\_\_\_\_ Quantity \_\_\_\_\_

Company \_\_\_\_\_

Contact \_\_\_\_\_ Title \_\_\_\_\_

Signature \_\_\_\_\_ Date \_\_\_\_\_  
(Approval for Manufacturing)



**800-591-9372**  
or 626-855-4804  
[www.acorneng.com](http://www.acorneng.com)